

## Beat the Heat with an Ice Cream Treat

MJM is excited to host Ice Cream Socials in honor of our 80 years of service. All Members are welcomed and encouraged to bring their families. While enjoying an ice cream treat, Members can mingle with others and get to know their Co-op family. On a hot summer day, nothing is more welcoming than the cool feeling of ice cream on sunburnt lips!



While Members are visiting with Co-op staff, there will be two different events for children. On Thursday, August 8th at MJM's Piasa Warehouse, MJM will be hosting two bounce houses. Since the bounce houses will be inside, the weather won't scare this fun time away!




On Thursday, August 15th at the KC Hall in Hillsboro, MJM will be welcoming back Tim the Twister and Sunshyne the Clown who will be making balloon animals and face painting. Not to mention the ice cream treats – again!



It is important to stay in touch with our Members throughout the year, especially those who are unable to attend the MJM annual meeting in March. This is an informal gathering yet there is valuable information that we want to make sure our Members are aware of. Each department will have individual booths set up so that Members can visit to be more knowledgeable on billing options, scholarships, rebates, solar, and receive SmartHub help, learn about Operation Round UP – the MJM Cares Program and so much more!



Each Member in attendance will receive a **\$5 bill credit** as an incentive to attend and an 80th Anniversary car coaster. Since there will be two separate Ice Cream Socials, we will have a drawing at each social for a grand prize winner. That grand prize will be an **\$80 bill credit!!**

Come ready for a snack on Thursday, August 8th at 6:00-7:30 pm at MJM's Warehouse in Piasa (700 Route 16). If you're busy that day, or it's too far from you, we welcome you to our Ice Cream Social on Thursday, August 15th at 6:00-7:30 pm at the KC Hall in Hillsboro (11198 IL-185). 

### MJM's Ice Cream Social


**Aug. 8th at  
MJM's Piasa  
Warehouse**

**Aug. 15th at  
KC Hall in  
Hillsboro**

6 P.M. - 7:30 P.M.



**MJM Electric Cooperative, Inc.**

A Touchstone Energy® Cooperative 

264 N. East St., Carlinville, IL 62626

Office 1-800-648-4729

Pay by Phone 1-855-313-6314

Office Hours

Mon-Fri 7:30a.m.-4:30p.m.



**Board of Directors**

Chairman

Robert Lehmann .....Girard

Vice Chairman

Paul Bartlett..... Brighton

Secretary

William R. Heyen.....Gillespie

Treasurer

W. Kay Schultz..... Godfrey

Marcie Tonsor..... Jerseyville

Louis E. Johnson..... Shipman

Robert Moore ..... Medora

James R. Niemann..... Litchfield

Dennis Stewart..... Nokomis

**Staff**

Laura Cutler..... President/CEO

Daniel Drumeller..... Director of Finance and Accounting

Joe Heyen ..... Director of Engineering and Operations

Jennifer Peterson..... Executive Administrator

**Editor**

Brooke Gross..... Communications and Member Services Coordinator

**Holidays observed**

New Year's Day, Good Friday, Memorial Day, Independence Day, Labor Day, Veterans Day, Thanksgiving Day, day following Thanksgiving and Christmas Day.

**How to report an outage**

Call 1-800-648-4729. Collect calls will be accepted to report outages.

When you report an outage, give your name and location number. Before calling, check your fuses or circuit breakers. Check with your neighbors. Call to report hazardous conditions.

MJM Along the Lines (USPS 854-620) is published monthly for \$3.00 per year by MJM Electric Cooperative, Inc., P.O. Box 80, Carlinville, Illinois 62626. Second-class postage paid at Carlinville, IL. POSTMASTER: Send Address changes to MJM Along the Lines, P.O. Box 80, Carlinville, IL 62626.

# Member Trading Post

**FOR SALE:** 2011 Tiffin "Open Road" Allegro Motorhome in excellent condition. Four slides – 8.1L Chevrolet gas engine with an Allison 6-speed transmission with 44,000 miles on it. Asking \$77,000. For more information, call 1-217-556-2348


**FOR SALE:** Large bags of girls summer clothes- 1 bag size 6-8 and 1 bag size 10-12 \$5 each Bag of girls shoes and boots size 2-3 \$10. Call 217-556-5361.

**FOR SALE:** 200 Gal Water Tank w/hose, 1yr old \$200, 4 P-265X65X18 Tires 217-825-4361

**FOR SALE:** Fifteen acres, timber property with creek. Great location. All utility access. Secluded with nature/wildlife. Great for hunting, RV homesite or investment. Litchfield Unit 12 school district. Access off Illinois Route 16. Sorry, no contract for deed or hunting leases. Selling by original owner. \$98,000. Please call 217-324-3869.

To list your free ad, email [brookeg@mjmec.coop](mailto:brookeg@mjmec.coop), call 1-800-648-4729, or mail the ad to MJM Electric Cooperative, 264 N. East St., P.O. Box 80, Carlinville, IL 62626. Each ad will run for one month. Some restriction may apply. Thank you.

## Did you know?

The flood and storms of 2019 have been frustrating with the amount of rain and obstacles it produces. However, things now are not as bad as they were in 1978. It was Easter weekend of 1978 that a powerful ice storm hit central Illinois. It began on Good Friday, and by Saturday morning there was more than an inch of ice and nearly 300 poles were on the ground. MJM was able to get help from Missouri Cooperatives, yet even the process of restoring lines were going down faster than crews could put them up. The damage cost the Cooperative \$500,000. Later in May, a tornado hit the area, costing MJM approximately 25 poles. Nearly two miles of conductor had been twisted, kinked and stretched beyond future reliability. The storm had also taken out five large transmission poles that served the Rinaker Substation, putting it out of service. MJM was able to put the load to three other substations, putting nearly everyone back in service within six hours. 



# Save Money Through Home Appliance Efficiency

With home appliances accounting for 13 percent of the average home's utility bill, appliance savings can have a significant effect on overall energy costs. Safe Electricity has tips to help you use your appliances efficiently:

## New Appliances

If you are in the market for a new appliance, look for the blue Energy Star label. The label guarantees that the appliance uses at least 20 percent less energy than appliances that are not Energy Star approved. The initial cost of an Energy Star product is often more expensive, but in the long run you will realize savings through decreased energy bills. Energy Star products are tested not only for efficiency, but also for performance and features.

## Washers and Dryers

- The biggest trick to washing clothes efficiently is to use less water and use colder water.
- Wash full loads when possible. Washing machines use about the same amount of energy regardless of load size. If you are doing a smaller load, adjust the size on the machine to use the appropriate amount of water.
- Do not waste energy by over drying laundry. If you have a moisture-sensing option, use it.
- Use high-speed spin cycles to help remove excess water and reduce drying time.
- Use a drying rack or line dry clothes when possible.
- Clean the lint trap and the dryer vent to promote circulation and prevent fire hazards.



## Refrigerators and Freezers

- A refrigerator's temperature should be 37 to 40 degrees Fahrenheit. If your fridge has an attached freezer, it should be set to 5 F. A separate freezer should be kept at 0 F.
- Cover and wrap foods. Uncovered food releases moisture, which makes your fridge work harder.
- Regularly defrost your freezer. If you have more than a quarter of an inch of ice, it is time to defrost.

## Dishwashers

- Air dry dishes instead of using the drying cycle.
- Use the shortest cleaning cycle possible.
- If you have a newer dishwasher model that does not require pre-rinsing, take advantage of it.



## Oven

- Use a microwave when possible. Microwaves cook more quickly and use less energy than stove tops or ovens. Using a smaller toaster/ convection oven is also a more efficient option. A smaller space to heat results in more energy saved.
- Do not frequently open the oven when it is in use. It causes warm air to escape and the temperature to decrease. Your oven has to use more energy to raise the temperature back up. 🚫🔥



*Shelby Electric Linemen recognized for their heroism at Shelby Electric Cooperative's 81st Annual Meeting held on June 14, 2019, for saving Kevin Carlen's life. Carlen is seventh from the left. (Photo by Kevin Bernson)*

How do you react when the life-saving training is needed to be used in reality? That is a tough question for the linemen at Shelby Electric Cooperative, MJM's sister Co-op to the north-east. On May 8, 2018, the linemen were participating in a yearly training called Pole Top Rescue or "Hurt Man" exercise. In this training, linemen work with a rescue dummy who has hurt itself while working on the top of a utility pole. Linemen are then instructed and practice to lower the rescue dummy to the ground to safety.

On this specific day, their training had quickly turned into reality. It was linemen Kevin Carlen's turn to retrieve the rescue dummy. At 22 feet in the air, Carlen suffered a cardiac arrest while climbing the pole resulting in his loss of consciousness. The men in the training immediately jumped into action and each person chose a role "Several guys were on the pole, rescuing him," said construction superintendent Bryan Chevalier. "When he came down, there were guys doing CPR, taking his tools off. We had guys grabbing an AED, calling 911. It was a huge group effort."

After receiving surgery to repair a clogged artery, Carlen made a full recovery. What could have been a tragic ending turned into a lifesaving story. "Someone called it the 'perfect storm' to have a [heart attack] happen at the Co-op office," said Carlen. "I could have been by myself or in a right of way with one other person."

Although you don't expect to put your trainings into practice every day, nor do you want to, it's always worth having the training and experience to save someone else's life. The linemen were honored by the American Red Cross with top national award, including a certificate signed by the President of the United States for their bravery and quick actions.


# WHEN TRAINING IS PUT INTO ACTION

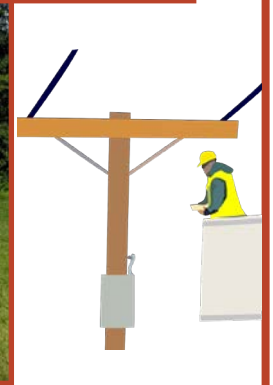
# BAND OF BROTHERS

Safety is a huge priority to all Co-ops across the nation. Even though you want everyone safe at all moments, you cannot predict when something like cardiac arrest is about to happen. The linemen for MJM had the opportunity to continue their yearly pole top rescue training on Wednesday, June 19.

During the training, linemen got to practice exactly what Shelby Electric did. "As a past employee of 16 years at Shelby Electric, and co-worker of Kevin Carlen and many of the linemen, this event made a huge impact on me," CEO Cutler said. "It has further deepened my commitment to MJM's safety training."

Board Members Johnson, Moore and Schultz, as well as, MJM's Attorney Lee Plummer were in attendance. Each lineman took his turn climbing the pole to rescue the dummy and return it safely on the ground.

Not only do our linemen look out for our Members, they look out for each other. That's what family does. More importantly, that's what a band of brothers does. 



*MJM Linemen pictured training in Pole Top Rescue*

---

---

# MJM'S SOIL ASSISTING COLLEGE CAMPUS

For many months now, Mother Nature has been at her worst, prolonging productivity for many projects for all professions, which includes upgrading electric services for our Members and trying to get a new MJM office facility built! Everyone is experiencing her wrath. It's been a domino effect. We had hopes that by May we would see some wall framing for the administrative office. Only until recent were the footings and under slab rough ins for the plumbing and electrical completed. Rock is currently being leveled and if the rain holds off as predicted, concrete should be poured this last week of June, the time of this writing. If this holds true, we should begin to see activity pick up.

As for the pre-engineered building (warehouse and truck bays), excavating was completed, and rebar fabricated and installed for the foundation trench with concrete almost in place. The last concrete truck had to be turned away on Friday, June 21<sup>st</sup> when once again, another gushing rainstorm came up! However, predictions for no rain is finally in site for more than two consecutive days!

In the scope of work to be performed on this building project, any excess soil was to be separated into two piles; usable and waste and left on site unless directed otherwise. After the main excavation of the detention pond, storm sewer piping and lime stabilization was completed, remains of a large dirt pile that any dirt bike rider would dream for could be seen!

It came to MJM's attention by means of JP Burns Excavating that Blackburn College was in need of some soil. MJM had use for some of the soil but not all of it, so was glad to be able to assist the local college by donating it to them. Since Burns was already hired by the College to do their project, and their equipment was on MJM's site from doing excavating work already, it worked seamlessly to get the soil loaded at MJM's site and unloaded at Blackburn's site at no cost to MJM.



The Vice President of Operations with Blackburn College informed MJM that the soil is being used for their varsity soccer field. Originally, there was a culvert separating the soccer field and practice field. During games, soccer balls would need to be dug out, kids would play in the rising water and it became hassle for players and coaches to walk across a bridge connecting the two areas.

In addition, the soil has been used for filling the culvert; connecting both the game and practice field. All legal action was taken to properly fill it, making the campus that much cleaner. Since the soil has been added, the small bridge has also been removed. Players and fans can now enjoy a smoother playing field, as the soil was also used to level it out. 🎨



---

---

# MJM Represented on Youth Tour



What do you get when 62 students from 26 Illinois electric and telephone cooperatives join 1,800 of their peers across the United States? You get the National Rural Electric Cooperative Association (NRECA) Youth to Washington Tour!

Two students from M.J.M. Electric Cooperative service territory were selected from a diverse group of applicants to represent their cooperative and enjoy an all-expense paid trip to Washington, D.C. from June 14-21 as part of the annual Youth Tour.




The 2019 Youth Tour delegates from M.J.M. Electric included Katlyn Edwards of Bunker Hill and Ryan Eschbach of Jerseyville.

The students toured Capitol Hill and met with U.S. Senators Dick Durbin and Tammy Duckworth and U.S. Representative Rodney Davis. They also visited historical and cultural sites including Arlington National Cemetery, the Supreme Court, President Lincoln's Cottage at First National Cemetery, a variety of memorials and the U.S. Capitol. Among fun activities the students enjoyed were an assembly of more than 1,800 Youth Tour participants from across the nation and a special farewell event at the Newseum, scheduled to close later this year.

"Youth Tour is a great opportunity that changes these students' lives," says Laura Cutler, M.J.M. President/CEO. "This experience helps prepare them for their futures. After touring our nation's capital, meeting congressional representatives and learning firsthand how our government works, they return home with valuable knowledge and memories that will last a lifetime."

Since 1964, the nation's cooperative electric utilities have sponsored more than 60,000 high school students to visit Washington, D.C., talk one-on-one with their U.S. congressional delegations and learn from energy and grassroots government education sessions. NRECA is the national service organization representing the nation's more than 900 consumer-owned, not-for-profit electric cooperatives, which provide service to 42 million Consumer-Members in 47 states.

M.J.M. Electric Cooperative is a Member of Touchstone Energy — a national alliance of local, consumer-owned electric cooperatives providing high standards of service to Members large and small. More than 730 Touchstone Energy cooperatives in 46 states are delivering energy and energy solutions to more than 32 million Members every day. Touchstone Energy cooperatives serve their members with integrity, accountability, innovation and a longstanding commitment to communities. 

# Do you have multiple MJM services?

*If so, we want to remind you about these payment and bill related options.*

**Receive all your invoices in one envelope and on one statement.**

Information for each service is broken down and includes the same information as it would if your bills were delivered separately. Just call the office and have invoice billing set up for FREE today!

## Summary Page

Account Number	Service Description/Address	Service Map Loc	Balance Forward	Current Charges	Total Due
12345	123 MJM WAY	99 E 01	\$0.00	\$143.57	\$143.57
12346	1939 MJM WAY	99 J 02	\$0.00	\$53.34	\$53.34
12347	FARM	99 G 03	\$0.00	\$94.05	\$94.05
12348	264 MJM WAY	99 A 04	\$0.00	\$273.38	\$273.38
	Total		\$0.00	\$564.34	\$564.34

## Account Number 500402

Service Map Loc	Service Description/Address	Rate	Meter Number	Days	Readings		Multiplier	kWh Usage
					Previous	Present		
99 A 04	1939 MJM WAY	1	12345678	31	9588	11514	1	1926

### kWh Usage History



PERIOD ENDING	MAY 2019	MAY 2018
Avg Daily Temp	65	73
Avg Daily kWh	62	58
Avg Daily Cost	\$8.82	\$8.76

### Current Bill Info

Power Supplier Energy	1,926 kWh @ 0.08423	\$162.23
Distribution Energy	1,926 kWh @ 0.02693	\$51.87
Service Delivery Charge		\$45.00
Outdoor Lighting		\$8.00
IL Public Utility Tax		\$6.28
<b>Current Charges Due By 06/15/2019</b>		<b>\$273.38</b>
10% Penalty Applied After Due Date		
<b>AMOUNT DUE</b>		<b>\$273.38</b>

## Interested in having one less thing to remember each month?


We offer an Auto Pay option, no matter how many accounts you have. These payments are processed on the due date printed on your billing statement. Please contact our office at 217-707-6156 for more information.

## Save time and make one payment for all accounts.

Even if you do not have invoiced billing set up, you may pay your bills with one transaction via cash, check or debit/credit card.

# Unclaimed Capital Credit Checks, 1980-81

In November 2018, MJM returned \$403,548 in capital credit allocations to members who purchased electricity from 1980 through 1981. MJM mailed checks to the last known addresses on file for these members. As of June 14, 2019, the list below contains the names of members whose checks were returned to us by the post office because of incorrect addresses, or whose checks have not been cashed. If your name

is listed below, or if you have an updated address for someone on this list, please contact MJM at 217-707-6156. If one of your relatives is on the list and he or she is deceased, we are able to rewrite the check in the name(s) of the Member's heir(s). The paperwork can be found online at <https://mjmec.coop/what-are-capital-credits-0>. You can also contact MJM directly to request that MJM mail you the paperwork. 



## MEMBERS WITH UNCLAIMED 2018 CHECKS, in alphabetical order - (Last Name First Name) or (Business Name)

A T A #343	BAILEY JANET	BELK LEO	BOLIN JOHN	BROWN RAYMOND
ADAMS ANNA	BAILEY ROBERT	BELL HOWARD	BONNELL CHARLES W	BROWN WILLIAM
ADAMS BETTY	BAILEY ZELPHIA	BELL ALEEN	BONNELL CHARLES D	BROWNELL ANNA
ADAMS COMMUNITY CLUB	BAIN CARL	BELL BERNARD	BONNEY ROGER	BROWNING JAMES
ADAMS ESTATE PETER	BAIN ANNIS	BELL ROBERT	BOOHER JACOB	BUOYLES CHARLES
ADAMS HARLON	BAKER W A	BELL ROY	BOOHER RONALD	BRUCE BONNIE
ADAMS JOHN	BAKER EDWARD	BELLITTO STEVE	BOOTEN GEORGE	BRUEGGEMAN BROS
AGANS FARYL	BAKER FRANK	BELT DAVID	BOREE JOE	BRUEGGEMANN CHARLES
AKERS ROBERT	BAKER GLENN	BELT HELEN	BOREN DENNIS	BRUHN CLARENCE
AKRIDGE GARY	BAKER JOHN	BELUSKO MIKE	BORMAN BYRON	BRUNAUGH FREEMAN
AL HERRIN ADVERTISING CO.	BAKER ROBERT	BENEDICT ELSIE	BOSTON HERMAN	BRUNSTEIN EST KENNETH
ALBERS FRED	BAKER WALTER	BENISH BROTHERS	BOTT FLOYD	BRUNSTEIN FRED
ALBERS GEORGE	BALDWIN EWING	BENNETT CHARLES	BOUILLON CHARLES	BRUNT JOHN
ALBERT DONALD	BALL LLOYD	BENNETT EDWIN	BOUILLON WILLARD	BRYAN MARGARY
ALBERTSON GEORGE	BALLARD EVELYN	BENNETT KENNETH	BOUILLON HENRY	BRYANT JESS
ALDRICH DENNIS	BALLARD ROY	BEQUETTE GLENNON	BOUNDS DONALD	BRYANT DONALD
ALEXANDER FLOYD	BANGERT LARRY	BERGHOFF CHARLES	BOURLAND JUIQUITA	BUCHHOLZ LLOYD
ALLAN CAROLE	BANKS ESTATE LEWIS	BERGMAN RICHARD	BOUTWELL JAMES	BUCKHO MICKEY
ALLEN JOE	BARD THEODORE	BERNHARDT I H	BOWERS KEVIN	BUCKLEY HARRY
ALLEN LESTER	BARKER ROLLA O SR	BERRY ALFRED	BOWERS W W	BUFORD CLIFFORD
ALLEN RONALD	BARKLEY CHARLES	BERRY KENNETH	BOWKER BETTY	BULLOCK ROBERT
ALLEN SANDRA	BARLOW GENEVIEVE	BERRY ROBERT	BOWLES JOHN	BUNTE ESTHER
ALLEN WILLIAM	BARNARD LLOYD	BERRY SHERMAN	BOY SCOUT TROUP #88	BURCH EARLENE
ALLENSWORTH CHARLES	BARNARD RODNEY	BERRY THOMAS	BOYD HENRY	BURCH KENNETH
ALSOP JAMES	BARNES GENEVIEVE	BERTAGNOLLI JAMES	BRACKETT SONNY	BURFORD DOROTHY
ALTEVOGT EDWARD	BARNETT JAY	BEST JEREL	BRACKMAN ERNA	BURGDORFF ALBERT
ALTEVOGT SHARON	BARNETT NORMAN	BETTIS DAKOTA	BRACKMAN LOUIS	BURGER EARL
ALWARD FLORENCE	BARNETT WANDA	BETTIS LARRY	BRAINERD LINDA	BURGESS SILAS
AMERICAN CANCER SOCIETY	BARNTHOUSE MARTHA	BETTS DAVID	BRALEY EDWIN	BURK AMY
ANDERSON LINN	BARRS SOUTHERN BAPTIST CHURCH	BEYER DONALD	BRALEY JOY	BURKLOW GORDON
ANDERSON BRYAN	BARRINGTON TRUMAN	BICKHAUS ERNEST	BRAMLEY THOMAS	BURLESON CECIL
ANDERSON JAMES	BARTON CARROLL	BIERBAUM HAROLD	BRANCH CARL	BURNETT ERNEST
ANDERSON LARRY	BARTON CARROLL	BIERBAUM STELLA	BRANDON EDGAR	BURNS A L
ANDERSON LASTER	BASDEN FRANK	BIERMAN FLORINE	BRANDT CHARLES	BURNS DARLENE
ANDERSON MARIE	BASSO JEAN	BIERMAN JOHN	BRANHAM MARCELLA	BURNS NONA
ANDERSON MARY	BATTLES SCOTT	BIFFIGNANI BETTY	BRATTEN SAMUEL	BURTON ANNIE
ANDERSON ROBERT	BATTLES WILLIAM SCOTT	BIGHAM THOMAS	BRAUER DENNIS	BUSCH LOUISE
ANDREW JAMES	BAUER JOHN	BILLBRUCK PEARL	BRAY SLATEN	BUSSE EDWARD
ANGELLY HENRY	BAUER PAMELA	BILLINGTON CAROL	BRAYE MICHAEL	BUST EDWARD
ANTROBUS THOMAS	BAUER ROBERT	BILLINGTON DAVID	BRECHT PAUL	BUTLER CHARLES
APPLEGATE ROY	BAUGH DALE	BIRKENKAMP FRANK	BRECKON EUGENE	BUTLER JACK
ARMENTROUT JAMES	BAUM JOHN	BIRKENKAMP FRED	BREDEN KENNETH	BUTLER MIKE
ARMES RANDALL	BAUMGARTNER JIM	BISHOP JOE	BREEDEN CARMEN	BUTLER VIOLA
ARMSTRONG CLAUDE	BAUR EVERETT	BISHOP ROBERT	BREEDEN DONALD	BYRD OLIVIA
ARMSTRONG PHILLIP	BAUSER DAVID	BISTER KENNETH EEST	BREITWEISER LOIS	C & H HOGS
ARMSTRONG WILLIAM	BAZE JERRY	BIZAILLION FOREST	BRESTAL JAMES	CAHOKIA BEAGLE CLUB
ARNETT EILEEN	BAZE STEVE	BLACKBURN DAVID	BREWER AUTO SALES & SALVAGE	CAIN ANN
ARNOLD EST MILDRED	BEAL JENNIE	BLACKBURN DAVID	BRIDGES AUBREY	CAIN STEVE
ARNOLD KEITH	BEALL RICHARD	BLACKORBY DAVID	BRIDGES MARY	CAIRNS ROBERT
ARTER ESTATE JOHN	BEARD LARRY	BLACKORBY KENNETH	BRIGGS MORRIS	CALAME WESLEY
ASH PEGGY	BEARD ORA	BLACKORBY LEON	BRINES KELLY	CALDWELL RANDALL
ASHLOCK EDWARD	BEARDEN GARY	BLACKORBY RONALD	BRISTOW WILTZ	CALLAHAN PATRICK
ATCHISON DALLAS	BEASLEY ESTATE BESSIE	BLAIR JAMES	BRISTOW CLAY	CAMBRON DENNY
ATCHISON ELDON	BEASLEY WILBUR	BLAIR JERRY	BRISTOW DONNA	CAMERER HAROLD
ATCHISON JUDITH	BEATTY HARLYNN	BLAIR JOHN	BROCK FRANK	CAMERER WILLIAM
ATEN & CASTIAUX	BEAVER W L	BLAIR MITCHEL	BROHAMMER GEORGE	CAMERON LOIS
ATTEBERY HAROLD	BEAVER THERESA	BLANFORD STEPHEN	BROOKS CHARLES	CAMERON MICHAEL
ATWOOD JERRY	BECKER FRED	BLEVINS JAMES	BROOKS JAMES	CAMPBELL NORMAN
AUSTIN EDWIN	BECKER EDWIN	BLOEMER ANTHONY	BROWN AARON	CAMPBELL ANNA
AUSTIN JACKSON	BECKER KIM	BLOTEVOGEL RICHARD	BROWN DALE	CAMPBELL CONNIE
AUSTIN RALPH	BECKER VIRGINIA	BOAT OLIVER	BROWN DANNY	CAMPBELL CURTIS
AUSTIN ROBERT	BEDWELL MARIE	BOCK EVELYN	BROWN DAVID	CAMPBELL JOHN
AYRES DAVID	BEECHLER CARL	BOCK GLENN	BROWN DONALD	CAMPBELL LUCILLE
AYRES RALPH	BEGOLE FRANCES	BOCKSTRUCK R D	BROWN ESPY	CAMPBELL ROBERT
BAALMAN RANDALL	BEICHLER NORMAN	BODEN RONALD	BROWN EUGENE	CAMPBELL VICKY
BACHMAN JAY	BEIERMANN MARILYN	BOEGEMANN MARTHA	BROWN FRANK	CANADAY DAVID
BACKMANN RAYMOND	BEIERMANN WILBUR	BOEHLER THOMAS	BROWN LARRY	CANNEDY RICHARD
BACON RIDGE FARMS	BEISER DONALD	BOEHME MILDA	BROWN LELA	CANNON ANNA
BACON ROBERT	BEISER DOROTHY	BOGGS ARTHUR	BROWN MARCIDUS	CANNON ESTATE EDWARD
BADER JOHN	BELCHER KENNETH	BOHLMAYER NETTIE	BROWN NORMA	CANNON JESSE
BADER LINDA	BELGOR CONSTRUCTION COMPANY	BOHN MARION	BROWN RANDY	CANNON VIRGIL
BAESER VERA		BOLICH EARL		CARLSON EDNA

▶ CAPITAL CREDITS continued from page 9

CARMODY RITA	COOK BRENDA	CUNNINGHAM LARRY	DEVRIES DONALD	EDELEN D R
CAROL'S MARKET	COOK ELDON	CUNNINGHAM PAUL	DEVRIES E J	EDGERSON LEROY
CARPENTER WILLIE	COOK FRED	CURDIE JOSEPH	DEVRIES MERL	EDGINGTON WILLIAM
CARRIKER HARRY	COOK GARY	CURRIE WILLIAM	DEWEY MICHAEL	EDKO OIL PROPERTIES
CARROLL GEORGE	COOK RUTH	CURRY EDDIE	DEWITT WILLIS	EDMONDS DAVID
CARTER DENNIS	COOKE RALPH	CURTIS AVERY	DICK LEROY	EDRINGTON ROBERT
CARTER DONNA	COOKE ROBERT	CURTIS MILLIE	DICKERSON THELMA	EDWARDS GRACE
CARTWRIGHT JIM	COOL NORMAN	CURZON ELIZABE	DIERKES HENRY	EDWARDS GLEN
CASELLI ELAINE	COOLEY GORDON	CZARNIK ROSE	DIERKING NOLAN	EDWARDS PAULINE
CASELLI EUGENE	COOLEY SANDRA	CZERNIEWSKI S E	DIESTELHORST DONALD	EDWARDS RODNEY
CASPER JAMES	COOPER LEONARD	D & D TRUCKING CO	DILLEY GARY	EGELER FRED
CASTLEBERRY BILLY	COPE IVAN	DADE CIDNEY	DITTUS NIMROD	EGELHOFF BRUCE
CASTLEBERRY FRANK	COPE CLAUDE	DAIGGER CHARLES	DIX HUGH	EGGER JACOB
CATHEY THOMAS	COPE DANIEL	DANIELS CHARLES	DOBRINICH THOMAS	EGGERS RUSSELL
CATHORALL MICHAEL	COPE GLENNA	DANIELS CHARLINE	DODSON MINNIE	EGGERS FRANCES
CAUSEY EDDIE	COPE MAE	DANIELS MAGGIE	DOERR LESTER	EHLERT WALTER
CEBALLOS MARY	COPE WILLIAM	DANIELS ROBERT	DOLAN SHARON	EHRENBERG LYLE
CHAMBERS KATIE	CORNELIUS PAUL	DANN KENNETH	DOLES NOBLE	EICHEN TERRY
CHAMPLIN KATHIE	CORY PAUL	DARE ROCKFORD	DOMBROWSKI HENRY	EILERT ALICE
CHANCE CHARLES	COSTELLO DEB	DARNELL LESLIE	DON BARTON TRUCKING &	EIRVON ALFORD
CHANDLER MARY	COTTON TIMOTHY	DARR ANTIONETTE	EXCAVATING	EISKANT GUS
CHAPMAN GERALD	COUCH LLOYD	DARR CHARLES	DORAL COUNTRY MANOR	ELDRED J B
CHAPMAN RALPH	COURTOISE WARREN	DARR DALE	DORLAQUE SAM	ELDRIDGE ALFRED
CHAPMAN ROSEMARY	COWGILL CHESTER	DARR DONNA	DORSEY ED	ELDRIDGE TOM
CHAPPELEAR MABEL	COX BETTY	DART DARRELL	DORSEY WILLIE	ELFGEN ESTATE EUGENE
CHARTRAND WILLIAM	COX CATHERINE	DAUBACH HARRY	DOTSON THOMAS	ELFRINK ISIDORE
CHASTAIN EVERETT	COX CHARLES	DAUGHERTY DONALD	DOTY KENNETH	ELLER DAVID
CHEFFY EDWARD	COX ERNEST	DAUGHERTY DOROTHY	DOUGHTY VERNON	ELLIOTT DEBORAH
CHILDRESS JAMES	COX LESLIE	DAUGHERTY RICHARD	DOUGLAS NORMAN	ELLIOTT GARY
CHRISTIAN JOHN	COX PAUL	DAVINROY LEO	DOWLAND WENDELL	ELLIOTT KEITH
CHRISTOPHER ALAN	COX RONALD	DAVIS HARVEY	DOWNS GLYNN	ELLIOTT MARK
CHRISTOPHER CARLOS	COX RUSSELL	DAVIS ALLEN	DOWNS CHARLES	ELLIOTT WAYNE
CLAMP FREDERICK	COYLE LAWRENCE	DAVIS BERNARD	DOWNS JACK	ELLIS BERT
CLANTON RICHARD	COYTE BEN	DAVIS CLAUDE	DOYLE ROBIN	ELLIS CAROLYN
CLANTON WESLEY	COZART HAROLD	DAVIS DAVID	DRAINER JOYCE	ELLIS FLOYD
CLARK ANNA	COZZELLO BEN	DAVIS DON	DRAINER CARRIE	ELLIS KATIE
CLARK FREDERICK	CRABTREE JOSEPHINE	DAVIS ESTATE MARTELL	DRAINER DANIEL	ELM ENTERPRIZES
CLARK CHARLES	CRAIL GLADYS	DAVIS FRANCIS	DRAKE FLOYD	ELSAH HILLS CORPORATION
CLARK CLOES	CRAIN HARVEY	DAVIS H I	DRAKE RICHARD	ELSON THOMAS
CLARK JOYCE	CRAINE ROBERT	DAVIS JARED	DRAPER IONE	EMDE ESTATE DORA
CLARK ROBERT	CRANE JACK	DAVIS JIMMY	DREW DAVID	EMERY LOLA
CLARK STELLA	CRANE JOSEPH	DAVIS KENNETH	DREWEL MELVIN	EMMONS PATRICI
CLARO LARRY	CREWS JAMES	DAVIS MARVIN	DRIVER TIM	ENGELHARDT SARAH
CLAYTON JIM	CREWS NORMAN	DAVIS RALPH	DROSTE WILLIAM	ENGELMAN HAROLD
CLAYTON LAVONNE	CRICK KENNETH	DAVIS TAMMY	DRULARD DON	ENGLAND BOB
CLEVINGER GARY	CRIPLE ROE	DAVIS VIOLET	DRURY M E	ENGLAND JOHN
CLEVINGER STEVEN	CRIPLE RUSSELL	DAVIS WILSON	DUDLEY ED	ENKE LESTER
CLOTHIER CARL	CRIST SOD CO INC	DAVIS WOODROW	DUELLO ELMER	ENKE PAULINE
COAKLEY ROBERT	CROCKER JAMES	DAWSON MARK	DUFF CHARLES	ENVIRONMENTAL SITE
COBURN STEPHEN	CROOK THOMAS	DAY CAROL	DUFF JERRYL	ERB PAUL
COCHRAN SCOTT	CROSS CHARLES	DE ANTONI MARY	DUGAN JOHN	ERNST ROY
COFER HERBERT	CROSSROADS STANDARD	DEAN SAM	DUGGER JAMES	ERWIN NORMAN
COLE WILLIAM	SERVICE	DEBARR FRED	DUNCAN ANDREW	ESAREY ALBERT
COLE RUSSELL	CROUCH ERNEST	DEES ROY	DUNCAN FRANK	ESAREY CURTIS
COLEMAN WANDA	CROUCH KENNETH	DEGERLIA CHARLES	DUNCAN MICHAEL	ESCHBACHER EUGENE
COLEMAN ROBERT	CROUTHERS MICHAEL	DEGLER CHARLES	DUNCANSON HELEN	ESSELBORN HELEN
COLIN GARY	CRUEZ ETHEL	DEGLER ROBERT	DUNHAM JONI	ETIENNE ROBERT
COLLINS & KRUSE	CRULL KENNETH	DEHNE BERNADINE	DUNHAM ROBERT	ETTER ELMO
COLLINS RUTH	CRULL NETTIE	DEHNE MERLE	DUNHAM TIMOTHY	EVANS MONTI
COLLINS EST LEO	CRUM CALISTIA	DELANEY TAYLOR	DUNN STEVE	EVANS SYLVIA
COLLINS LEONARD	CUDLIPP JEFF	DELL VERNON	DUNN WALTER	EVERETT CAROLYN
COLLINS LESTER	CULLEY DALE	DELVECCHIO MICHAEL	DUNNAGAN JERRY	EVERING RICHARD
COLLINS LOIS	CULLI MICHAEL	DENBY & DOBBS	DUNSE MARY	EVERLEY STANLEY
COLLINS WILLIAM	CULLISON ROBERT	DENEFF GENE	DURBIN ROBERT	EVILSIZER JAMES
COLUMBIANA SEED CO	CULP ESTHER	DENNIS EDNA	DURFEE KERRY	EWIN IRENE
COLVIN HARRY	CUMMINGS CHARLES	DENTON GENEVA	DYCKMAN PAMELA	EYMAN ZOLA
COLWELL LYDIA	CUMMINGS DONALD	DEPPER HAROLD	DYER MELVIN	FACKLER RICHARD
COMBS PAUL	CUMMINGS DUDLEY	DESHERLIA ADAM	DZIUROWITZ HEINZ	FAHEY WILLIAM
COMPAGNO JOHN	CUMMINGS ELLEN	DESHIELDS JOHN	EAGLE MANAGEMENT	FAMILY INN RESTAURANT
COMPTON LESTER	CUMMINGS EVA	DESILVA ROBERT	EAKER CHAS	FARLEY WAYMAN
CONNER WILLIAM	CUMMINGS HOWARD	DEVENING LILLIAN	EAKER VERNON	FARR DANA
CONNER MICHAEL	CUMMINGS LEONARD	DEVENING WILLIAM	EARP J T	FARRELL STANLEY
CONNORS DOROTHY	CUMMINGS VERNON	DEVERELL CLIFFORD	EBENSTEIN JOHN	FAULKNER GERALD
CONRAIL CORP	CUMPTON MELBA	DEVERGER DAISY	ECKHOLDT JOHN	FEENEY THOMAS
CONWAY PAT	CUNNINGHAM GERALD	DEVRIES DEAN	EDDINGTON EMMA	FENTON NELSON

▶ CAPITAL CREDITS continued from page 10

FENTON DENNIS  
 FENTON DWAIN  
 FENTON GEORGE  
 FENTON LINDA  
 FENTON WILLIAM  
 FERBER PATRICIA  
 FERENBACH GERALDINE  
 FERENBACH BERL  
 FERGUSON EDWARD  
 FERGUSON DONALD  
 FERREL ANGEL  
 FESSLER ALFRED  
 FESSLER HELEN  
 FESSLER MINERVA  
 FETCHER WILLIAM  
 FILES JAMES  
 FINCH DENISE  
 FINCK FRED  
 FINKE EDWARD  
 FINNEGAN ROGER  
 FIRST TENNESSEE BANK OF  
 MEMPHIS  
 FISCHER HILBERT  
 FISH GEORGE  
 FISHER ALAN  
 FISHER F K  
 FISHER JOANN  
 FITZGERALD LELA  
 FLATT EARL  
 FLAXBEARD KEITH  
 FLEMING HUBERT  
 FLEMING GARY  
 FLETCHER ELIJAH  
 FLEURY SIDNEY  
 FLIPPER CARL  
 FLITZ FERN  
 FLORY JAMES  
 FLYNN GREGORY  
 FOILES DELTIE  
 FOLEY FALCOM  
 FOLKERS ROXIE  
 FOLKERS GRACE  
 FORBES LLOYD  
 FORD CLAYTON  
 FORD ESTATE FRIEDA  
 FORD SUSAN  
 FORD WALTER  
 FORSYTHE ATWOOD  
 FOSTER STEVEN  
 FOWLER JAMES  
 FOWLER MALCOLM  
 FOX JASON  
 FRAASE HARRY  
 FRANK RALPH  
 FRANKLIN CLARENCE  
 FRANZ GRACE  
 FRAVALA FARM  
 FRAZER H L  
 FRAZIER LOIS  
 FREAND ROGER  
 FREDRICK DONALD  
 FREDRICKSON MICHAEL  
 FREE JERRY  
 FRENCH A O  
 FRENCH DAVID  
 FRENCH STEVE  
 FRENZ DONALD  
 FRENZ ROBERT  
 FRICKE EDWARD  
 FRICKE HAROLD  
 FRIEND GEORGE  
 FRIESE ARCHIE  
 FRITZ J T  
 FRKOVICH JEFFREY  
 FROST MELVIN

FRY DENNIS  
 FRY HAROLD  
 FRY R B  
 FRYE MARY  
 FUGUITT HARRY  
 FULKERSON ELLEN  
 FULLER & YOUNG  
 FULTON MARTIN  
 FUNK CHRISTINE  
 FUNK ESTATE OTTO  
 FUNK PAUL  
 GAABO HELEN  
 GAARE GEORGE  
 GAFFNEY CHARLES  
 GAGLIARDO TONY  
 GAGNON ALLEN  
 GALLANT NICOLE  
 GALOREMILDRED  
 GANSNER EST CLARENCE  
 GARCIA JAY  
 GARDNER STEVE  
 GARRETT ORRIS  
 GARRISON HERMAN  
 GAS OIL & LAND DEV INC  
 GAUEN WALLACE  
 GAUNTT JEWELL  
 GAY OTHELLO  
 GEE J C  
 GEE JAMES  
 GEE ROSETTA  
 GEERS LESTER  
 GEHRKE SAMUEL  
 GEILER JOYCE  
 GEISER OLIVER  
 GEISLER FRED  
 GEISLER RAYMOND  
 GELDBACH WARREN  
 GENINATTI MARY  
 GEORGEFF STEVEN  
 GERBIG GEORGE  
 GERDES ERVIN  
 GERDES GLADYS  
 GERDINE GROVER  
 GERECKE PATRICIA  
 GERMAN GEORGE  
 GETTINGS ERNEST  
 GETTINGS R L  
 GHERE BILLY  
 GIBSON DON  
 GIBSON GEORGE  
 GIBSON HARRY  
 GIBSON WILBUR  
 GILL DARRELL  
 GILLESPIE COUNTRY CLUB  
 GILLESPIE JAMES  
 GILLHAM FRED  
 GILLILAND EDWARD  
 GILLILAND SALLY  
 GILMORE CECLIA  
 GILMORE SAMMIE  
 GILMORE STANLEY  
 GILMOUR ROBERT  
 GILREATH CURTIS  
 GILWORTH ROBERT  
 GIMLIN WILLIAM  
 GIPSON EST EVELYN  
 GIPSON GEORGE  
 GITCHO A N/SHIRLEY  
 GLATT RAYMOND  
 GLOVER ROBERT  
 GODFREY CHESTER  
 GODIN DONALD  
 GOEBEL HAROLD  
 GOESMANN STEPHANIE  
 GOLBRICHT EST

GOLLEY WILLIE  
 GOODE SANDRA  
 GOODWIN RALPH  
 GORDON ROSANNE  
 GORMAN JOHN  
 GRABLE PHILIP  
 GRACE RICHARD  
 GRADEN CHARLES  
 GRANER EST MILAN  
 GRANGER WILLIAM  
 GRAVES LOREN  
 GRAY ADELLE  
 GRAY CHARLES  
 GRAY DOROTHY  
 GRAY JAMES  
 GRAY WILLIAM  
 GREELING LAWRENCE  
 GREELING ALBERT  
 GREELING BILLY  
 GREELING STEPHEN  
 GREEN ELMER  
 GREEN JOHN  
 GREEN TERRY  
 GREEN WILLARD  
 GREENE JAMES  
 GREENWALT DELORES  
 GREER JUDITH  
 GREGORY IRENE  
 GREGORY STANLEY  
 GREMLI JOHN  
 GRIESBAUM BILLY  
 GRIESEMER ALMA  
 GRIFFEL MAXINE  
 GRIFFIN PEARLINO  
 GRIFFIN HAROLD  
 GRIFFIN RONALD  
 GRIGG PHILIP  
 GRIGSBY GEORGE  
 GRIMES JESSE  
 GRIZZLE CHESTER  
 GRIZZLE GARY  
 GRIZZLE JOHN  
 GROGAN MUREL  
 GROPPPEL FAMILY  
 PARTNERSHIP  
 GROPPPEL HAROLD  
 GROPPPEL WARREN  
 GROSENHEIDER HERBERT  
 GROSS EARL  
 GROSS ELIZABE  
 GROSS RUTH  
 GROTEFENDT WILBUR  
 GROVE JAMES  
 GROVE CHUCK  
 GROVE DONALD  
 GROVER E D  
 GROVES DONALD  
 GROVES LINDELL  
 GRUENDAHL ELIZABETH  
 GUNTREN FRANK  
 GURGANUS JOHN  
 GUSTINE FRANK  
 GWILLIM JERRY  
 GWIN JAMES  
 GWYN STANLEY  
 HAAR JOHN  
 HAAS GEORGE  
 HADLEY DAVID  
 HAEFFNER LINDA  
 HAENITSCH RONALD  
 HAGEMAN IRENE  
 HAGEN DOROTHY  
 HAGEN MICHAEL  
 HAGERTY GEORGE  
 HAHNENKAMP DUANE

HALE WILLIAM  
 HALL O B  
 HALL PEGGY  
 HALLEMAN ELLA  
 HALLIDAY JAMES  
 HALLOWS ALICE  
 HALM DAVID  
 HALTER WILLIAM  
 HAMILTON EVERETT  
 HAMILTON RUTH  
 HAMLETT EDWARD  
 HAMM CHARLES  
 HAMMANN DALE  
 HAMMANN MARY  
 HAMPTON DONALD  
 HAMPTON VERNA  
 HANCOCK GUY  
 HANCOCK THERESA  
 HAND ALFRED  
 HAND ALLAN  
 HAND IDA  
 HANELINE ANNA  
 HANEY FRANK  
 HANKINS THOMAS  
 HANKINS JOSEPH  
 HANKINS RICHARD  
 HANOLD BRUCE  
 HANOLD RUTH  
 HANSEN ROBERT  
 HARBAUGH JIM  
 HARBISON WILLIAM  
 HARDER JOHN  
 HARDISON MARIAN  
 HARDWICK MARVIN  
 HARGROVE HELEN  
 HARMON JACKIE  
 HARMONY BAPTIST CHURCH  
 HARMS GILBERT  
 HARPER JOSEPH  
 HARRIS CARL  
 HARRIS GARETH  
 HARRIS GLENN  
 HARRIS JOHN  
 HARRIS LOUIS  
 HARRIS ROBERT  
 HARRISON BEN  
 HARRISON BETTY  
 HARSHANY HELEN  
 HARSHMAN JACK  
 HART PEGGY  
 HART RALPH  
 HART RANDALL  
 HARTLEY HAROLD  
 HARTMAN GEORGE  
 HARTMANN JOHN  
 HARTNETT ETHEL  
 HARTSHORN DONALD  
 HARTWIG MICHAEL  
 HASQUIN FRANK  
 HATCHER KEVIN  
 HAUG ALFRED  
 HAUN CLARENCE  
 HAUSHALTER HELEN  
 HAUSTEIN MARLA  
 HAUTER HAROLD  
 HAWKINS ROSA  
 HAWKINS EDUARDE  
 HAWKINS MICHAEL  
 HAWKINS SHIRLEY  
 HAWKINS VIRGINIA  
 HAYDON NANCY  
 HAYDON TERRY  
 HAYES JERRY  
 HAYES JOHN  
 HAYN DAVID

HAYS CHARLES  
 HAYWOOD EST LIZZIE  
 HAZELWOOD H K  
 HAZZARD LARRY  
 HEALY D W  
 HEARN CYNDY  
 HEBBLETHWAITE JAMES  
 HECK LON  
 HECKMAN RONALD  
 HEDEMANN NORMAN  
 HEDGECOCK J M/ EDNA  
 HEFFERNAN EDNA  
 HEFLIN ALBERT  
 HEIEN MARTHA  
 HEILMAN DOUGLAS  
 HEINEN PAUL  
 HEINTZ NELLIE  
 HELD JAMES  
 HELLRUNG LARRY  
 HELM ERWIN  
 HELM JUDITH  
 HEMBROUGH GERRIE  
 HEMKEN DEANNA  
 HEMKEN JASON  
 HEMKEN RAY  
 HEMKEN TERRY  
 HEMKEN VIVIAN  
 HEMMERLEIN CARL  
 HEN HOUSE INTERSTATE INC.  
 HENDERSON KAREN  
 HENEGHAN LLOYD  
 HENRY CHARLES  
 HENRY JAMES  
 HENSCHEN SHELL SERVICE  
 HENSHAW JANET  
 HENSLE MARGARET  
 HERDER RICHARD  
 HERMAN MARIE  
 HERMAN CHARLES  
 HERMAN NAOMI  
 HERN GREGORY  
 HESSENAUER FRANK  
 HETTICK BEMAN  
 HETTICK WATERWORKS  
 HEYEN GERALD  
 HEYEN LISA  
 HICKS BESSIE  
 HIGH FINIS  
 HIGHLANDER MELVIN  
 HILL EVALYN  
 HILL LEONARD  
 HILL SHARON  
 HILL WELDON  
 HILLA WILFRED  
 HILLIS BILLIE  
 HILLMER WILLIAM  
 HIMSTEDT EARL  
 HINTON WILBUR  
 HIRSCHL EDDIE  
 HITCHCOCK EST KATHRYN  
 HOBSON WILMER  
 HOCH RALPH  
 HOCK ERWIN  
 HOEFKER LESTER  
 HOEHN FRANK  
 HOFFMAN ESTATE LEO  
 HOFFSTETTER DORINE  
 HOGGATT FRED  
 HOLDEN DANNY  
 HOLDER DEANNA  
 HOLIK JOHN  
 HOLIK STEPHEN  
 HOLLAND JOHN  
 HOLLIDAY ALMA  
 HOLLIS GEORGE

HOLLOWAY LULA  
 HOLMAN KATHERINE  
 HOLMES LYNN  
 HOLTMANN JEROME  
 HOMESTEADERS INN  
 HONEY ROY  
 HOOLEY JOHN  
 HOOPER K E  
 HOOVER CAROLYN  
 HOPKINS GERALD  
 HOPKINS ROY  
 HOPPER F S  
 HORTON BILLY  
 HOUCHEM PERRY  
 HOULETTE DAVID  
 HOUP CHARLES  
 HOUSEMAN JAMES  
 HOWARD JOEL  
 HOWARD MARY  
 HOWARD ROBERT  
 HOWELL GEORGE  
 HOWELL JAMES  
 HOWELL RAY  
 HOY C W  
 HOYT DAVID  
 HUBBARD LOWELL  
 HUBBARD HAROLD  
 HUBER PATRICK  
 HUCKER AILEEN  
 HUDGENS ROBERT  
 HUDSON C J  
 HUDSON JAMES  
 HUFF LEROY  
 HUFF LESLIE  
 HUGHES E E  
 HUGHES BESSIE  
 HUGHES DONALD  
 HUGHES MARY  
 HULL ESTATE HAZEL  
 HULL LAURENCE  
 HUMKE CLINT  
 HUNDLEY RANALD  
 HUNN LAWRENCE  
 HUNT C C  
 HUNT JAMES  
 HUNT LARRY  
 HUNT WILLIAM  
 HUNTER ELIZABETH  
 HUNTER ROBERT  
 HUNTER WESLEY  
 HUNTSMAN ROBERT  
 HUNTSMAN WILLIAM  
 HUPPERTS JUDITH  
 HURLEY EDWARD  
 HURRY WILMA  
 HUSON PATRICIA  
 HUSON SCOTT  
 HUSSEY DARYLE  
 HUTCHINS HAROLD  
 HUTCHINS RONALD  
 HUTTE EARL  
 ILER MORRIS  
 ILLINOIS CENTRAL GULF  
 INDIAN LAKES ESTATE  
 ING LARRY  
 INGHAM WARREN  
 INGOLD JOHN  
 INGRAM DAVID  
 INGRAM EVELYN  
 INTERSTATE PRODUCERS  
 IRELAND JOHN  
 IRWIN MARLIN  
 ISLEY CARL  
 ISRINGHAUSEN JAMES  
 ISRINGHAUSEN EST FLOYD

ISRINGHAUSEN KEVIN  
 IVEY SAMUEL  
 JACKSON ROY  
 JACKSON HENRY  
 JACKSON JAMES  
 JACKSON KEITH  
 JACKSON MARTIN  
 JACKSON RANDALL  
 JACKSON WILLIAM  
 JACOBS DIANE  
 JACOBS LEWIS  
 JACOBY PAUL  
 JAGGIE LEROY  
 JAHNSSEN CAROL  
 JAHNSSEN GUY  
 JALLEN AMBROSE  
 JAMES MILDRED  
 JAMESON JACK  
 JANIS MARY  
 JANSSEN LAURENCE  
 JARMAN ALICE  
 JARMAN KATHLEEN  
 JARMAN ALBERTA  
 JARVIS DELBERT  
 JATCKO E J  
 JEFFERSON COLUMBUS  
 JENKINS GARY  
 JENKINS JON  
 JENNINGS HOMER  
 JENNINGS CALVIN  
 JENNINGS GLEN  
 JERDE GLADYS  
 JERSEY COUNTY CONST CO  
 JERSEY SANITATION CORP  
 JETT DONALD  
 JETT JERRY  
 JETT THOMAS  
 JINKS DALE  
 JOHNS JEFF  
 JOHNSON WILLIE  
 JOHNSON CHARLES  
 JOHNSON CLIFFORD  
 JOHNSON DAVID  
 JOHNSON DUANE  
 JOHNSON EST. NETTIE  
 JOHNSON GLENN  
 JOHNSON GRACEANNA  
 JOHNSON HAROLD  
 JOHNSON IDA  
 JOHNSON JOHN  
 JOHNSON LOUIS  
 JOHNSON LUCILLE  
 JOHNSON LUELLA  
 JOHNSON MICHAEL  
 JOHNSON OLIVER  
 JOHNSON PATRICIA  
 JOHNSON RHONDA  
 JOHNSON ROBERT  
 JOHNSON TERRY  
 JOHNSTON FRANCES  
 JOHNSTON KEVIN  
 JOHNSTON MARILYN  
 JOHNSTON WILBUR  
 JOINER VERNON  
 JONES HELEN  
 JONES ADENE  
 JONES AUDREY  
 JONES ERNIE  
 JONES HAROLD  
 JONES INTERCABLE  
 JONES JAMES  
 JONES JOHN  
 JONES RICHARD  
 JONES ROGER  
 JONES SANDRA

JONES SEYMOUR  
 JONES SHELBY  
 JONES THOMAS  
 JONES VIRGINIA  
 JONES WAYNE  
 JONES ZEALEY  
 JORGESEN R A/G  
 JORN PAUL  
 JOSTES CHARLES  
 JOYCE HAROLD  
 JOYCE REECE  
 JUNETTE EARL  
 JUTTEMAYER GEORGE  
 KAEMMERER FRED  
 KAHL KATHRYN  
 KALLAL PHILLIP  
 KANYO OLIVER  
 KARRICK RICHARD  
 KASCH HOWARD  
 KASER BILLIE  
 KASSING VIRGINIA  
 KASTEN DEAN  
 KASTING RUSSELL  
 KASTNER CHARLES  
 KATCHMAR NELLIE  
 KAUEAUF DAN  
 KAY INA  
 KEARBAY CLIFFORD  
 KEELER LINDA  
 KEELING JAMES  
 KEEN DON  
 KEETON DAVID  
 KEEVEN IGNATIUS  
 KEISER ALLEN  
 KEISTER ERVIN  
 KEITH LESTER  
 KELLERY LHELLIAN  
 KELLEY EDWIN  
 KELLEY HARRY  
 KELLOGG-CLARK J A  
 KELLY FRANCIS  
 KELM DEBORAH  
 KEMP ROBERT  
 KENNER GARY  
 KENT ESTATE BARBARA  
 KEOHANE DONALD  
 KESSINGER CLINTON  
 KESSINGER JOSEPH  
 KESSINGER PEARL  
 KETTERER LEONARD  
 KETTS WALTER  
 KIENITZ KURT  
 KILIAN MARVEL  
 KILIAN J D  
 KINCADE MELFORD  
 KING KOLLIS  
 KING AMOS  
 KING CHERYL  
 KING MILDRED  
 KING MORRIS  
 KING SHIRLEY  
 KINS DAVID  
 KINSER R L  
 KIRBY CHARLES  
 KIRBY GARY  
 KIRCHNER ELDON  
 KIRCHNER STELLA  
 KIRKWOOD DAVE  
 KIRKWOOD JOE  
 KISER ROBERT  
 KISSIAR CLETE  
 KITSON JAMES  
 KITTEL JOHN  
 KLAUS HERBERT  
 KLAUS RAYMOND

KLEEMAN JOHN  
 KLEIN WALTER  
 KLEPPISCH EDWARD  
 KLIM WILLIAM  
 KLIMUT ANNA  
 KLIMUT JOHN  
 KLINGER HERB  
 KLOCKE SUSAN  
 KLUNK HELEN  
 KLUS FRANK  
 KNAUEL LAVERNE  
 KNESTAUT DANNY  
 KNETZER DENISE  
 KNIGHT JEWELDEAN  
 KNIGHT GLENN  
 KNOCH TERRY  
 KNUDSON JOSEPH  
 KOCH DAVID  
 KOENIGSFELD DEBORAH  
 KOENIGSFELD KENNETH  
 KOGEL HOWARD  
 KOHLMILLER FRED  
 KOKE EVELYN  
 KOMBRINK CLARENCE  
 KONIAK DIANNE  
 KONIECZNY EDWARD  
 KOPP-EVANS CONSTR CO  
 KORONIS KAY  
 KOSKI JULIAN  
 KRAEGERBRINK EMIL  
 KRALIK JOHN  
 KRAMER ARTHUR  
 KRAMER HENRY  
 KRAMER KEITH  
 KRAUSHAAR ROGER  
 KRAUSS ROY  
 KRESS OLGA  
 KREYLING FRANK  
 KROESCHEL JAMES  
 KROPP GEORGE  
 KROSKI DONALD  
 KROTZ EDITH  
 KROUPA MICHAEL  
 KRUCKEBERG OPAL  
 KRUEGER NOVA  
 KRUG DOUGLAS  
 KRUG ROBERT  
 KRUSE RUTH  
 KUDERKA JOHN  
 KUETHE ROGER  
 KUETHE WAYNE  
 KULASH MARTIN  
 KULENKAMP HOMER  
 KUNTZMAN NORMAN  
 KUNZ DELMAR  
 KUSMIERCZAK GARY  
 KUTTER RAY/VIRGINIA  
 LAATSCH ELDA  
 LACY STANLEY  
 LAGEMANN OLIN  
 LAGEMANN MERLAND  
 LAIRD RICKIE  
 LAKE CHARLES  
 LAKE OF TALL TIMBERS  
 LAKE TALL TIMBERS POOL  
 LAKIN BARRY  
 LAMB RUTH  
 LAMBERT EARL  
 LAMBERT LINDA  
 LAMBERT MILLIE  
 LAMONT EDWARD  
 LANCASTER EARL  
 LAND CLYDE  
 LANDON EST KATHARYNE  
 LANDON ROY

LANDRETH DEBBIE  
 LANDRETH IVY  
 LANE JOHN  
 LANE AUDRIS  
 LANE CLYDE  
 LANGE W H  
 LANGEN HOWARD  
 LANGFORD J E  
 LANGHARDT JOSEPH  
 LANGLEY HELEN  
 LANOS DAVID  
 LAPLANT MARJORIE  
 LAPLANT THOMAS  
 LARNER HAROLD  
 LASH BEVERLY  
 LASLIE JOHN  
 LAST FRONTIER SALOON  
 LAWLER EVELYN  
 LAWLER JIMMIE  
 LAWRENCE MARY  
 LAWSON ALBERT  
 LAWTON LEO  
 LAYTON JOHN  
 LE BELINDA  
 LE CATES SILAS  
 LEACH DAVID  
 LEACH EDWIN  
 LEACH IDA  
 LEACH MICHELE  
 LEASURE ROSS  
 LEBRO EVELYN  
 LECOCQ FERYL  
 LEE EARL  
 LEE LARRY  
 LEE ROBERT  
 LEE SIDNEY  
 LEFLER THOMAS  
 LEIGHTON JESSIE  
 LEMBKE KELLY  
 LEONARD OLEN  
 LEONBERGER MAXIE  
 LESSMAN CASEY  
 LESSMAN DALE  
 LESSMAN ERNEST  
 LETZKUS RUTH  
 LEVI LLOYD  
 LEVI WILLIAM  
 LEVORA EST. AVESTA  
 LEWEY KENNETH  
 LIDSTROM DALE  
 LIEBIG ALAN  
 LILEY RONALD  
 LINDSEY ROBERT  
 LINSLEY MARGARET  
 LINVILLE ESTATE CHARLES  
 LIST MARK  
 LITTLE JOHN  
 LITTLE WILLIAM  
 LOBMASTER LOUIS  
 LOBSTEIN VEDA  
 LOCKHART JEWELL  
 LOEW JOHN  
 LOGAN EMILIE  
 LOGAN HARRY  
 LOGSDON BRUCE  
 LOGSDON LOGAN  
 LOGUE WILLIAM  
 LOMELINO MARK  
 LONGWELL MERVIN  
 LOOPER DAVID  
 LORENZ GEORGIA  
 LOUCHE ALBERT  
 LOUCKS MINNIE  
 LOVALL CHARLES  
 LOVELESS GLENN

▶ CAPITAL CREDITS continued from page 12

LOVELESS JOYCE  
 LOVELESS RANDALL  
 LOVELL JOAN  
 LOWE BERNICE  
 LOVE MILTON  
 LOY M J  
 LOY RICHARD  
 LUCKER LLOYD  
 LUCKETT LAWRENC  
 LUNDAHL RONALD  
 LUTES DANIEL  
 LUTTRELL JEANETTE  
 LYNCH MARY  
 M & H HOGS  
 MAAG RAYMOND  
 MAASS GENEVA  
 MABB DEAN  
 MACDONOUGH WILLIAM  
 MACIAS JOS  
 MACK DAVID  
 MACKAY JAMES  
 MACKELDEN EDWIN  
 MADDUX LARRY  
 MADISON ROBERT  
 MAGRUDER ROBERT  
 MAHAN ROBERT  
 MAHKOVITZ LOUIS  
 MAHOLLAND BLANCHE  
 MAIN WILLIAM  
 MAINS JAMES  
 MAINWARING D J  
 MALHAM CURTIS  
 MALIN JOSEPH  
 MALLEY VONITA  
 MALONE EARL  
 MALONE MAUDIE  
 MALY MATTHEW  
 MANDEL MARGUERITE  
 MANDORCA WILLIAM  
 MANN CARLA  
 MANN DAVID  
 MANNING WILLIAM  
 MANNING JAMES  
 MANNING MABLE  
 MANSFIELD MERRILL  
 MANSFIELD PAUL  
 MANSHOLT DOROTHY  
 MAPLE JAMES  
 MAPLES DEWAYNE  
 MAPPS ALONZO  
 MARING ERNEST  
 MARKO STEVE  
 MARSHALL HARRY  
 MARSHALL ELMER  
 MARSHALL LOUIS  
 MARSHALL MARIE  
 MARSHALL RICKY  
 MARTIE NORMAN  
 MARTIN KENNETH  
 MARTIN AUDREY  
 MARTIN ERA  
 MARTIN ESTATE ELOUISE  
 MARTIN JAMES  
 MARTIN JAMES  
 MARTIN W H  
 MASINELLI AMELIO  
 MASK LEE  
 MASON CARL  
 MASON KARL  
 MASULIS JOSEPHINE  
 MATHENIA CHARLES  
 MATHENIA JESSE  
 MATLI BERNARD  
 MATLOCK CALVIN  
 MATTHEWS ROBERT

MAUL FRED  
 MAUL ROBERT  
 MAUPIN EDWARD  
 MAURER FERN  
 MAXEINER LESTER  
 MAY LONNIE  
 MAYERHOFER JOSEPH  
 MAYFIELD JAMES  
 MAYHALL JOSEPHINE  
 MCADAMS MICHAEL  
 MCADAMS RICHARD  
 MCANINCH EDWARD  
 MCANINCH ROSS  
 MCARDLE IRENE  
 MCCAIN JOHN  
 MCCANN WILLIAM  
 MCCARTHY ORA  
 MCCLAIN EMORY  
 MCCLAIN JUANITA  
 MCCLARY EDGAR  
 MCCLINTOCK DONALD  
 MCCOLLAUGH CHARLES  
 MCCOLLEGAN FRED  
 MCCOLLUM DENZIL  
 MCCORD DONALD  
 MCCORMICK HERBERT  
 MCCORMICK LONNIE  
 MCCOY HENRY  
 MCCrackEN ELIZABETH  
 MCDANIEL JOHN  
 MCDANIELS MARY  
 MCDARIS ROBERT  
 MCDONALD ROBERT  
 MCDUFFEY JOHN  
 MCFARLIN CHARLES  
 MCGAULEY GARY  
 MCGUIGGAN EDWARD  
 MCHUGHS SHARON  
 MCKAY DENNIS  
 MCKECHAN MARGARET  
 MCKENNEY BETTY  
 MCLAUGHLIN ROBERT  
 MCMURRAY DONALD  
 MCMURTRY MORRIS  
 MCPHERSON EST SARAH  
 MCPHERSON GLEN  
 MCPIKE JOHN  
 MCQUAID RAMONA  
 MCQUERN-WEBB MARLYN  
 MCREVEY WILFRED  
 MCREYNOLDS W M  
 MCWILLIAMS GUY  
 MEAD RONALD  
 MEEHAN FRANCIS  
 MELCHER LAURENCE  
 MELETTI QUENTIN  
 MELLISH EST JOSEPH  
 MELTON MAXINE  
 MERCER RAY  
 MEREDITH GERALDINE  
 MEREDITH JUDITH  
 MERRIMAN MELVIN  
 MESSERLY GOTTLIE  
 MESSNER REGINA  
 METCALF AND HELM  
 METCALF JOHN  
 MEYER PAUL  
 MEYER ROLAND  
 MEYER BRENDA  
 MEYER EDWARD  
 MEYER LARRY E  
 MEYERS LARRY W  
 MICHAEL URSULIN  
 MIDDLETON PAULA  
 MIKE NICHOLAS

MILES ESTATE GERALD  
 MILLARD CARL  
 MILLER LEONA  
 MILLER CAROLE  
 MILLER DENNIS  
 MILLER DOUGLAS  
 MILLER GARY  
 MILLER BERNICE  
 MILLER BETTY  
 MILLER GEORGE  
 MILLER GERALD  
 MILLER GLADYS  
 MILLER GLEN  
 MILLER HERBERT  
 MILLER JACK  
 MILLER JACQUELYN  
 MILLER LINDA  
 MILLER LOLA  
 MILLER NELLIE  
 MILLER TERRY  
 MILLER WILLIAM  
 MILLER WILLIAM S  
 MILLHORN EDWARD  
 MILLS BRADLEY  
 MILLS CHARLES  
 MILLS FORREST  
 MILTON WALTER  
 MINARD GRACE  
 MINDRUP EST ERNA  
 MINDRUP LUELLA  
 MISSISSIPPI VALLEY  
 RACEWAY INC  
 MITCHELL GLENN  
 MITCHELL CLARENCE  
 MITCHELL CULLEN  
 MITCHELL JAMES  
 MITCHELL JOHN  
 MITCHELL MILDRED  
 MITCHELL THEODORE  
 MITCHELL W J  
 MLEKUSH MAMIE  
 MOHR BETTY  
 MONAGHAN JOHN  
 MONDINK HARRY  
 MONK BETTY  
 MONKE ROY  
 MONTAGUE DOROTHY  
 MONTGOMERY RONALD  
 MONTGOMERY W R  
 MOODY DWIGHT  
 MOON CARLOS  
 MOORE ADELE  
 MOORE BELL  
 MOORE DALE  
 MOORE DAVID  
 MOORE DONOVAN  
 MOORE ESTATE ROSE  
 MOORE GERALD  
 MOORE LAWRENCE  
 MOORE WILLIAM  
 MORAN CAROLYN  
 MORAN MILDRED  
 MORELAND BARBARA  
 MORELAND CARROLL  
 MORGAN ALEXANDER  
 MORGAN CHARLES  
 MORGAN FREDERICK  
 MORGAN GLENN  
 MORGAN ID  
 MORGAN RHONDA  
 MORGAN STANLEY  
 MORLEE ROBERT  
 MORRIS DALE  
 MORRIS NELSON  
 MORRIS RANDALL

MORRIS RICK  
 MORRISON L W  
 MORRISON GEORGE  
 MORTLAND LESTER  
 MOSBY IRVIN  
 MOSS VIRGIL  
 MOTON JOHN  
 MOULTON SHEILA  
 MOUSER MARVIN  
 MOWEN PRESTON  
 MUEGGENBURG JOHN  
 MUELLER OTTO  
 MULLEN H W  
 MULLEN WM  
 MUNOZ ALFONZO  
 MURASKI EDWARD  
 MURPHY W C  
 MURPHY JOHN  
 MURPHY TIMOTHY  
 MURRAY H W  
 MUSCH DOROTHY  
 MUSGRAVE PATTY  
 MUSIAL LEONA  
 MYDLO FRANK  
 MYERS GUY  
 MYERS FRANCIS  
 MYERS GARY  
 MYERS ROBIN  
 MYERS RONALD  
 MYERS RUSSELL  
 NANCE DONALD  
 NANCE EZEL  
 NANCE JERRY  
 NATION CHARLES  
 NEELY MERLE  
 NELSON HARRY  
 NELSON DAVID  
 NELSON LOIS  
 NELSON ROBERT  
 NEWBERRY HENRY  
 NEWBERRY JESSE  
 NEWBY GEORGE  
 NEWBY NAOMI  
 NEWMAN LESTER  
 NEWPORT GUY  
 NICKEL RUBY  
 NICKELL SAMUEL  
 NICKELS DORENE  
 NIEHAUS ROBERTA  
 NIEHAUS KENNETH  
 NIEMANN HERBERT  
 NIEMANN RAY  
 NIEMANN TRUST LEONA  
 NIEMEYER FREDERICK  
 NIMMONS GERALD  
 NOAK JOHN  
 NOBBE PAUL  
 NOBLE ORA  
 NOETH HELEN  
 NOLAN JAMES  
 NORRIS DONALD  
 NOVARIA JOHN  
 NOVELL EUGENE  
 NOVOTNY GEORGE  
 NOVOTNY WILLIAM  
 NOVOTNY LILLIAN  
 NUELLE LAURENCE  
 NUGENT & SCHAPANSKI  
 NULL E D  
 NUMRICK EMMA  
 NUTWOOD ASSEMBLY  
 OBRIEN JAMES  
 OBERMILLER HERBERT  
 O'CONNOR ROBERT  
 ODEN RONALD

ODOM BILLY  
 O'DONNELL LEE  
 O'DONNELL RICHARD  
 OHLEY SHARON  
 O'LEARY SHEYRL  
 OLLER FRANCES  
 OLTSMANN BROTHERS  
 O'NEAL DARLENE  
 O'NEIL JAMES  
 ONTIS MARA  
 ORLAND VIOLA  
 OSBURN WILLIAM  
 OSMOE ROBERT  
 OTTER CREEK OUTING  
 CLUB  
 OVERBEY CHRISTINE  
 OVERMEYER LARRY  
 OWENS LANCE  
 OWENS RONALD  
 OWENS WELDON  
 P & D LUMBER COMPANY  
 P P LIMITED  
 PALLER FRANK  
 PALLONE DOMINIC  
 PANSICK FRANK  
 PARKER EUGENE  
 PARKER LELA  
 PARKER WILLIAM  
 PARR ERIC  
 PARSLEY JAMES  
 PARTRIDGE IRVIN  
 PARTRIDGE JEFF  
 PASSER RICHARD  
 PASTROVICH VIRGINIA  
 PATCHIN TIM  
 PATTERSON MARGARET  
 PATTERSON OSCAR  
 PATTERSON WILLIE  
 PATTON PAUL  
 PAUL CAROL  
 PAYNE FORREST  
 PAYNTER LAWRENCE  
 PEAR SAMUEL  
 PEDDICORD JUDITH  
 PEDIGO DANNY  
 PENCE JESUSA  
 PEOPLES REX  
 PEPPROCK ANNA  
 PERDUN BETTY  
 PEREZ EDMUND  
 PERKINS FLOYD  
 PERKINS OLIVIA  
 PERKINSON ETHEL  
 PERKINSON RAYMOND  
 PERRINE COY  
 PERRINE REV TRUST RALPH  
 & MYRTL  
 PERRY MICHAEL  
 PETERS CARL  
 PETERS EST BEN  
 PETERS JAMES  
 PETERS LILLIE  
 PETERS ORVILLE  
 PETERSEN PAUL  
 PETERSON R H  
 PETERSON RONNIE  
 PETROLINE CHARLES  
 PETRONE A N  
 PEYTON EVERETT  
 PEPPER NAEOMA  
 PFLAUM DANIEL  
 PHELPS MELVIN  
 PHILLIPS FURNLEY  
 PHILLIPS JEAN  
 PHILLIPS PIPELINE

► CAPITAL CREDITS continued from page 13

PHILLIPS RUBY  
 PICKERILL DAVID  
 PICKERILL SELMA  
 PICKETT WALTER  
 PIKE STEVE  
 PINKOWSKI RICHARD  
 PIRTLE PRESTON  
 PISTORIUS MARK  
 PLATTE PIPELINE  
 PLUHM EARL W.  
 POCKLINGTON EVAN  
 POCKLINGTON IRVIN  
 POCKLINGTON JIMMIE  
 POINTER RAYMOND  
 POLK TOWNSHIP VOTING  
 HALL  
 POLLARD EVERETT  
 POLLARD FLOYD  
 POLLARD HAL  
 POLLEY CECIL  
 PONIEWAZ THADDEAS  
 PORTER GLENN  
 POSTLEWAIT URBAN  
 POTOCKI MATTHEW  
 POTTER JERRY  
 POWELL GEORGE  
 POWELL HUGH  
 POWELL ROBERT  
 POWERS CHARLES  
 POWERS ROY  
 POWERS SANDRA  
 POWIS JOAN  
 PRANGE WILHELMINA  
 PRATT EST BERNADINE  
 PREECE EDWARD  
 PREIS HOME CONST INC  
 PRENZEL EDWARD  
 PRICE DAVID  
 PRIDDLE THOMAS  
 PRIMAS WILMER  
 PRINCE ENTERPRISES INC  
 PROCTOR JOSEPH  
 PROUGH GERTRUDE  
 PRUETT TERRY  
 PRUITT L R  
 PRUITT OPAL  
 PRUITT RICKY  
 PRUITT ROGER  
 PRUNTY BEATRICE  
 PURCELL DENNIS  
 PURCELL JOHN  
 PURDY LOUIS  
 PURSEY ESTATE  
 PYLE EVELYN  
 PYLES RAYMOND  
 QUAKENBUSH EVELYN  
 QUARTON WENDELL  
 RADFORD MARY  
 RADFORD RONALD  
 RAE DORRELL  
 RAFTIS DAVID  
 RAGLAND SYLVIA  
 RAGLIN JOE  
 RAGSDALE JIMMIE  
 RAINES HELEN  
 RAINEY MARSHAL  
 RAKER W C  
 RALSTON & DENNIS  
 RALSTON RUSSELL  
 RALSTON SARAH  
 RALSTON IMEL  
 RAMM CONSTRUCTION INC  
 RANDOLPH DARLENE  
 RANDS WILLIAM  
 RASURE CLARENCE

RATLIFF CHARLES  
 RATZ W R  
 RAY EARNEST  
 RAY ELMER  
 RAY RUTH  
 RAYBURN RAYMOND  
 RAYMOND WALTER  
 READ KENNETH  
 REDFERN IRA  
 REDFERN MARIE  
 REHER FRANCIS  
 REINBOLD GEORGE  
 REINCKE JANICE  
 RELEFORD RICHARD  
 RELEFORD SANDRA  
 RELLER HARVEY  
 RENFRO HIRAM  
 RENNER RONALD  
 RETTINGHAUS EST.  
 BERNARD  
 REYNOLDS CHARLES  
 REYNOLDS JAMES  
 REYNOLDS JOSEPH  
 REYNOLDS LARRY  
 REYNOLDS MELVIN  
 REYNOLDS MICHAEL  
 REYNOLDS RUBY  
 REYNOLDS RUSSELL  
 REZNICEK AUGUST  
 REZNICEK JOSEPH  
 RHODES ALBERT  
 RHODES DENNY  
 RICE BILLIE  
 RICE WILBUR  
 RICHARDSON DAVID  
 RICHARDSON JAMES  
 RICHARDSON LOUIS  
 RICHESON C E  
 RICHMOND JOHN  
 RIDENHOWER WAYNE  
 RIECHMANN J A  
 RIEGER ANTHONY  
 RIGGINS HARRY  
 RIGGS ROBERT  
 RILL JAMES  
 RINGHAUSEN EDWARD  
 RITCHIE DELMAR  
 RITSCHER ERNEST  
 RITZ JEFFERY  
 RIVES FOSTER  
 ROACH RALPH  
 ROACH GERALD  
 ROACH EDWARD  
 ROACH GENE  
 ROACH JAMES  
 ROACH MARY  
 ROARK RAY  
 ROBBS DAVE  
 ROBEEN RALPH  
 ROBERTS DAVEY  
 ROBERTS DELORA  
 ROBERTS HARLEY  
 ROBERTS ORVILLE  
 ROBERTSON NORMAN  
 ROBINSON JAMES  
 ROBINSON JOHN  
 ROBINSON STEPHEN  
 ROBINSON WILLIAM  
 ROBINSON ZOA  
 ROCKER DANIEL  
 RODERICK DONALD  
 RODGERS EUGENE  
 RODNEY JAMES  
 ROEMER CLAUDE  
 ROGERS GEORGE

ROGERS GLEN  
 ROGERS PETER  
 ROGERS STEPHEN  
 ROHLFING BARBARA  
 ROLANDO MIKE  
 ROLLINS WILLIAM  
 RONCO FRANK  
 RONK H A  
 ROOT J M  
 ROSENTHAL DAVID  
 ROSENTRERER JACK  
 ROSENTRERER JANIE  
 ROSS GENEVA  
 ROSS BILLY  
 ROSS HUBERT  
 ROSS JOHN  
 ROSS KENNETH  
 ROTH LOUIS  
 ROTHE KATHERI  
 ROULAND PAUL  
 ROWLING ROBERT  
 ROWLING STEVEN  
 RUNYAN ROBERT  
 RUPPE DENVER  
 RUSH GEARLDEAN  
 RUSSELL DAVID  
 RUSSELL EARL  
 RUSSELL FRED  
 RUTHERFORD CURTIS  
 RUYLE LOLA  
 RUYLE CURTIS  
 RUYLE EARL  
 RUYLE EST BYRON  
 RUYLE OTIS  
 RYAN CHRISTOPHER  
 RYAN THELMA  
 RYE FRANK  
 S.A.S.A. CLUB  
 SAATHOFF CANDACE  
 SAATHOFF ERICA  
 SAATHOFF LLOYD  
 SAATHOFF MELANIE  
 SACHA LOUISE  
 SAILSBUURY VERNA  
 SALTER JERRY  
 SAMPSON HARRY  
 SANDERS CHESTER  
 SANDERS DOROTHY  
 SANDERS HAROLD  
 SARGINSON JOHN  
 SARGINSON DALE  
 SARGINSON TERRY  
 SATTERLEE ELBERT  
 SATTERLEE JESSE  
 SAUCIER C W  
 SAUERWEIN ARTHUR  
 SAULS ROY  
 SAVAGE DONALD  
 SAVAGE JOHN  
 SAWYER DONALD  
 SCHAAF FRANK  
 SCHAAF RUSSELL  
 SCHAAKE CHRISTIAN  
 SCHAEFER WALTER  
 SCHAEFER CHARLES  
 SCHAEFER HENRY  
 SCHAFER BROTHERS  
 SCHAFFER WILLIAM  
 SCHALLENBERG ROBERT  
 SCHEFFEL FLORENCE  
 SCHELLENBACK SHEILA  
 SCHELLER RANDLE  
 SCHELM JOSEPHINE  
 SCHELM MICHAEL  
 SCHENHOFFER FRANK

SCHIESHNEK CARL  
 SCHLIEPER BEN  
 SCHMACKER JOHN  
 SCHMIDGALL ROWENA  
 SCHMIDT ELMA  
 SCHMIEDER BARBARA  
 SCHNAARE OTTO  
 SCHNARRE ANNA  
 SCHNEIDER FRANK  
 SCHNEIDER JOSEPH  
 SCHNUR GEORGE  
 SCHOEN VICTOR  
 SCHOENEWEIS SHIRLEY  
 SCHOFIELD RICHARD  
 SCHRAMM DALE  
 SCHRAMM RALPH  
 SCHRAUT EST CARL  
 SCHREIBER CARL  
 SCHREIBER FRANCES  
 SCHREIER ALBERT  
 SCHROEDEL WALTER  
 SCHROEDER ERWIN  
 SCHROEDER KIM  
 SCHROLL ROBERT  
 SCHUETTE DOROTHY  
 SCHUETZ LAWRENCE  
 SCHUETZ ARTHUR  
 SCHUETZ DONALD  
 SCHUETZ FRED  
 SCHUETZ OTHA  
 SCHULTE EDITH  
 SCHULTZ ELMER  
 SCHULZE DONALD  
 SCHUSTER MARK  
 SCHUTTE FRED  
 SCHWAB PAUL  
 SCHWAGER WILSON  
 SCHWENNER LORRAINE  
 SCHWERTMANN FRANK  
 SCOGGINS EMMETT  
 SCOGGINS CHARLES  
 SCOGGINS EDITH  
 SCONCE ALMON  
 SCOTT ADELIA  
 SCOTT BARBARA  
 SCOTT DAVID  
 SCOTT RICHARD  
 SCOTT VIRGINIA  
 SCRIVNER LOREN  
 SEABAUGH FARMS INC  
 SEAL RAYMOND  
 SEBRING LESLIE  
 SECOR LARRY  
 SEIB DAVID  
 SEIFRIED MARY  
 SERES FRANK  
 SEVIER KENNETH  
 SEWELL CELESTINE  
 SHADE KENNETH  
 SHAKOFSKY THEODOR  
 SHANNON OSBORNE  
 SHARP JOHN  
 SHARP MARIAN  
 SHASTEEN STANLEY  
 SHAW ALBERT  
 SHAW ETHEL  
 SHAW KENNETH  
 SHAW ROBERT  
 SHELTON CAROL  
 SHELTON EDDIE  
 SHERAKA JOHN  
 SHERWOOD ORVAL  
 SHIMCHICK JAMES  
 SHIPMAN NANCY  
 SHOLES DEBRA

SHOOK ALFRED  
 SHORT LUCY  
 SHOWERS HAROLD  
 SHREVE WILLIAM  
 SHROYER RICHARD  
 SHULTZ EUGENE  
 SIDWELL JACKIE  
 SIDWELL SHEILA  
 SIEBERT JOHN  
 SIES EUGENE  
 SIEVERS GREGORY  
 SIGGINS TERI  
 SILVESTER FRANK  
 SIMMONS CHARLES  
 SIMMONS RIVERDEAN  
 SIMMS HOWARD  
 SIMMS JESSE  
 SIMPSON HAROLD  
 SIMPSON JAMES  
 SIMPSON STEVE  
 SIMPSON SUSAN  
 SIMPSON TIMOTHY  
 SIMS JOHN  
 SINCLAIR SOPHIA  
 SINCLAIR HARRY  
 SINCLAIR JOHN  
 SINGER MARGARETE  
 SINGLER EST WILLIAM  
 SISSON TAMARA  
 SITTON VICTOR  
 SITZES BASIL  
 SIX THIRTEEN ILL FARMS  
 SKAGGS LUCRETIA  
 SKELTON OPAL  
 SKINNER LUCILLE  
 SKINNER TROY  
 SLANSKI VICTOR  
 SLEDGE MARY  
 SLEPICKA RICHARD  
 SLIGHTOM GLENN  
 SLIGHTOM LARRY  
 SLIGHTOM RUSSELL  
 SLIMAK MIKE  
 SMITH BURDETTE  
 SMITH FRANKLI  
 SMITH LELIA  
 SMITH AUDREY  
 SMITH C D  
 SMITH CHERYL  
 SMITH D D  
 SMITH DENNIS  
 SMITH DENNIS  
 SMITH DOROTHY  
 SMITH EARNEST  
 SMITH EDDIE  
 SMITH FRED  
 SMITH GEORGE  
 SMITH DONNA  
 SMITH GERALD  
 SMITH H H  
 SMITH IRVIN  
 SMITH JAMES  
 SMITH JAYNE  
 SMITH JERRY  
 SMITH JOHN  
 SMITH JOSEPH  
 SMITH LENA  
 SMITH PAUL  
 SMITH ROGER  
 SMITH RONALD  
 SMITH RONDELL  
 SMOLTZ FRANK  
 SNEDEKER MARTHA  
 SNIDER WILLIAM  
 SNIPES JOHN  
 SNOPOK FRANCIS

► CAPITAL CREDITS continued from page 14

SNOW CHESTER  
 SNOW HOWARD  
 SNOW LEROY  
 SNYDER LYMAN  
 SNYDER FRANK  
 SNYDER WILLIAM  
 SORRELS STANLEY  
 SOUTIA LOUISE  
 SPA LAWRENC  
 SPATAFORA JOHN  
 SPAULDING EST JACK  
 SPEARS GEORGE  
 SPENCER CHARLES  
 SPICKERMAN ERNEST  
 SPIES HOWARD  
 SPINNER FRIEDA  
 SPIRES JOE  
 SPRINGMAN AL  
 SPRINGMAN GLADYS  
 SPRINGMAN MARK  
 SPUDICK P D  
 ST CATHERINE'S CHURCH  
 ST CLAIR LAUREL  
 ST GEORGE STEVE  
 ST LOUIS BRIDGE CO  
 ST PETERS RALPH  
 STACK EDWARD  
 STACK FRANCES  
 STACY DONALD  
 STAFFORD ROBERT  
 STAHL LOUIS  
 STAJDUHAR JUANITA  
 STAMMER ROBERT  
 STAMPS KERMIT  
 STAMPS VICTOR  
 STANDARD OIL COMPANY  
 STANDEFER KENNETH  
 STANFIELD CHESTER  
 STANKA HENRY  
 STANTON GORDON  
 STARK ROBERT  
 STARR FRANK  
 STAUFFER COLLIS  
 STAYTON DANNY  
 STECKEL JOHN  
 STEEN HARRY  
 STEGMAN NORBERT  
 STEIMEL R G  
 STEINHOFF GERALD  
 STEINMANN FARM  
 STENDBACK DONALD  
 STEVENS MARLENE  
 STEVENS TINA  
 STEVENSON JAMES  
 STEWARD ELSIE  
 STEWARD JAMES  
 STEWARD PATRICK  
 STEWART ELIZABETH  
 STEWART JOHN  
 STEWART VESTER  
 STIENMANN FREDERICK  
 STILLAR CECIL  
 STILLER CLINTON  
 STINNETT MYRLE  
 STOCKERT ALLAN  
 STODDARD THOMAS  
 STODDARD ESTATE FLORENCE  
 STOKES VIRGIL  
 STONE IRMA  
 STONE CURTIS  
 STONE FRANCIS  
 STOREY ROSE MARY  
 STOTLER GARY  
 STOUT A D  
 STOUT JOE  
 STOVALL BOBBY  
 STRANG JOHN  
 STRAUB JAMES  
 STREBEL DONALD  
 STREEB RAY  
 STRIPLIN BETTY  
 STRONG MARY  
 STRUBLE WAYNE  
 STUCKER WALTER  
 STULTS DOROTHY  
 STULTS EST HOWARD

STULTS FRANCES  
 STULTS ROBERT  
 STUTZ DOROTHY  
 SUGGS JAMES  
 SUMMERFIELD LAVINIA  
 SUMMERS WILLIAM  
 SUMPTER JOHN  
 SUMPTER MABEL  
 SUMPTER WALTER  
 SUNSET INN MOTEL  
 SURRETT E L  
 SUTFIN DANIEL  
 SUTTON PHILIP  
 SUYO LOUIS  
 SWAN DELTA  
 SWEENEY ELVIS  
 SWEENEY MARY  
 SWEET EILEEN  
 SWIFT LEO  
 SWIFT RICHARD  
 SWISHER EDITH  
 SYMANK JUDITH  
 TALCOTT WILLIAM  
 TALL TIMBERS LODGE  
 TALL TIMBERS SWIMMING  
 POOL  
 TALLEY G L  
 TALLEY GEORGE  
 TALLMAN SEAN  
 TANNER GEORGE  
 TARRANT ROBERT  
 TATE DENNIS  
 TATE WILLIAM  
 TAYLOR ANSEL  
 TAYLOR BUD  
 TAYLOR LOWELL  
 TAYLOR MARY  
 TAYLOR NANCY  
 TAYLOR OLLIE  
 TAYLOR RAY  
 TAYLOR RICHARD  
 TAYLOR STEPHEN  
 TAYLOR W D  
 TAYNOR ROBERT  
 TEETERS MICHAEL  
 TELFORD HARRY  
 TEPEN JANICE  
 THACKER DORIS  
 THACKER RICHARD  
 THAXTON KEITH  
 THE ESTATE OF FRANK  
 FITZGIBBONS  
 THEER JOSEF  
 THEISEN LEO  
 THEISON KENNETH  
 THIEBAUD GEORGE  
 THOMAS CLOTEE  
 THOMAS JERLEAN  
 THOMAS MILDRED  
 THOMAS RICHARD  
 THOMAS SHIRLEY  
 THOMAS WILLIE  
 THOMPSON FRANCES  
 THOMPSON BROTHERS  
 THOMPSON GEORGE  
 THOMPSON JUNIOR  
 THOMPSON RUSSELL  
 THOMPSON WILLIAM  
 THOMSON CLIFFORD  
 THORNSBURY HAROLD  
 THORNTON ETHAN  
 THORNTON GLEN  
 THUNDERBIRD LAKE ASSN  
 THURMAN LEE  
 THURSBY EST. WENDELL  
 TIEMAN HERBERT  
 TIEMANN JOSEPH  
 TIEPELMAN EARL  
 TIERNEY JOHN  
 TIGHE MARGARET  
 TILLMAN REGINA  
 TIMMONS WAYNE  
 TIMS WILMON  
 TINCHER DENNIS  
 TINNIN ROBERT  
 TIPSWORD DONALD

TITSWORTH DEAN  
 TITSWORTH JOHN  
 TOBEY'S D. J.'S  
 TODD ELMER  
 TOLAR WILLIAM  
 TOLBERT DENNIS  
 TOLAN PAUL  
 TOLLIVER ALLAN  
 TOMERLIN JESS  
 TOP CHOP INC  
 TORRENCE JAMES  
 TOSH DONNA  
 TOWELL ROSETTA  
 TOWERY KEITH  
 TRASK ROGER  
 TRAUB ERIC  
 TRAVIS LOWELL  
 TRAYLOR GEORGE  
 TRAYLOR LEE  
 TRIANGLE MFG. INC.  
 TRILL CHARLES  
 TRTAN MIKE  
 TRUEBLOOD AGNES  
 TUCKER RUSSELL  
 TUCKER CLARA  
 TUCKER FRED  
 TUCKER GLENN  
 TUCKER HERMAN  
 TUCKER MARGUERITE  
 TUCKER NATHAN  
 TULLEY HARRY  
 TURNER RALPH  
 TURNER VERNA  
 TURNER WILLIAM  
 TWITCHELL EVELYN  
 U S WATER CO INC  
 ULRIC ALLEN  
 UNITED VIDEO INC  
 URBON FRANK  
 URBONOS DARRIN  
 URNIKIS DAVID  
 VALDES ALFRED  
 VALENTI TERRY  
 VAMBAKETES PAUL  
 VANAUSDOLL TIM  
 VANBURENSBURG BAPTIST  
 CHURCH  
 VANBURENSBURG UNITED  
 METHODIST CH  
 VANCE CARL  
 VANFOSSEN ROBERT  
 VANWALLEGHEN JAMES  
 VARBLE ELMER  
 VARBLE ELMER  
 VARBLE RICKEY  
 VARDA ROBERT  
 VARGE ANN  
 VARWIG CHARLES  
 VEDDER FERN  
 VERMILLION FREDRICK  
 VERMILLION ROY  
 VERNATTI THOMAS  
 VERNOR OLIVER  
 VICKERY ALFRED  
 VIVIANO BILLY  
 VOGEL MERLE  
 VOGT CLARK  
 VOLLINTINE WESLEY  
 VOLLINTINE VICTOR  
 VOORHEES FARM  
 VOTAW MARTIN  
 WADE ROBERT  
 WADLOW GEORGE  
 WAGAHOFF ROBERT  
 WAGENBLAST PAUL  
 WAGENBLAST HAROLD  
 WAGENBLAST ROY  
 WAGHORN JAMES  
 WAGNER OREN  
 WAGNER CHARLES  
 WAGNER DORA  
 WAGNER PETER  
 WAGONER RANDALL  
 WAHL JAMES  
 WAHLE HAROLD

WALDECK JACK  
 WALDEN LAURA  
 WALKER DONALD  
 WALKER ROBERT  
 WALKER ROOSEVE  
 WALKER TERRY  
 WALKER WALTER  
 WALKER WILLIE  
 WALL OLIVE  
 WALL LEROY  
 WALLACE DOROTHY  
 WALLACE FRED  
 WALLACE GARY  
 WALLACE PAUL  
 WALLACE VICKI  
 WALLECK ROBERT  
 WALLIS DAVID  
 WALLIS HAROLD  
 WALLS ALFRED  
 WALSH TERRY  
 WALSH DONALD  
 WALSH FRANCIS  
 WALSHVILLE MASONIC  
 LODGE 475  
 WALSHVILLE POST OFFICE  
 WALTER PHILIP  
 WALTHER FREDERICK  
 WALTON WILLIAM  
 WALTRIP DAISIE  
 WALTRIP DALE  
 WALZ GERALD  
 WALZ RICHARD  
 WARDEN STANLEY  
 WARFIELD LEON  
 WARFIELD MAC  
 WARFIELD WILLIAM  
 WARFORD CLINTON  
 WARFORD JAMES  
 WARFORD WILLIAM  
 WARNER DONALD  
 WARREN GRETA  
 WARREN HOWARD  
 WASHBURN DEAN  
 WASHBURN HERMAN  
 WASSON VERNON  
 WATERS BRIAN  
 WATERS GENE  
 WATERS GEORGE  
 WATKINS DOROTHY  
 WATKINS BILLY  
 WATKINS DAVID H  
 WATKINS DAVID R  
 WATKINS RUTH  
 WATKINS T G  
 WATSON TRUMAN  
 WATSON EARL  
 WATSON HAROLD  
 WATSON LAURA  
 WATSON ORA  
 WATSON ORAL  
 WATT MARGARET  
 WATTS JERRY  
 WEATHERFORD GEORGE  
 WEATHERFORD MIDGE  
 WEAVER CLARENC  
 WEAVER JASON  
 WEBB CAROLYN  
 WEBB ESTHER  
 WEBB HENRY  
 WEBB SILVANUS  
 WEBER VERNON  
 WEEKELY MARIE  
 WEHRMAN DONALD  
 WEIGAND F R  
 WEIGEL EST ROBERT  
 WEISE LEONARD

WEISER ARNO  
 WELCH ARMAND  
 WELCH ALBERT  
 WELKER ALAMO  
 WELL LONDA  
 WELLER OLIVER  
 WELLS RUSSEL  
 WELTON FORD  
 WENDLE RONALD  
 WEST BETTY  
 WEST ROBERT  
 WEST SUSIE  
 WESTERN UNION  
 TELEGRAPH CO  
 WHALEY KENNETH  
 WHEELER MABEL  
 WHEELER RUBY  
 WHEELER ADELIA  
 WHEELER EARL  
 WHIPPLE FLOYD  
 WHITAKER JACK  
 WHITE GEORGE  
 WHITE ALBERT  
 WHITE CHARLES  
 WHITE ESTATE MYRTLE  
 WHITE HAROLD  
 WHITE NORMAN  
 WHITE OAKS RESTAURANT  
 WHITE ROBERT  
 WHITE RUTH  
 WHITEHEAD DAVID  
 WHITEHEAD FLORENCE  
 WHITEHOUSE ELMER  
 WHITING PETER  
 WHITLER ELMER  
 WHITLOCK KENNETH  
 WHITLOCK MILFORD  
 WHITT BOBBY  
 WHITTEN TORNIE  
 WHITTELY WILLIAM  
 WHITWORTH ARLENE  
 WHYERS LESTER  
 WHYTE FRANK  
 WIBEL HAZEL  
 WIEDUWILT HARRY  
 WIENEKE OTTO  
 WIENEKE VENA  
 WIESE ARTHUR  
 WIESE CHARLES  
 WIGGINS EVALEAN  
 WILCOX MARCIA  
 WILD WINIFRED  
 WILDHABER JEROME  
 WILD-JOHN'S PORK FARM  
 WILFONG EDWARD  
 WILKINSON ROBIN  
 WILLHOIT ELLEN  
 WILLIAMS KENNETH  
 WILLIAMS HERBERT  
 WILLIAMS BOB  
 WILLIAMS MARIAN  
 WILLIAMS THOMAS  
 WILLIAMS VIVIAN  
 WILLIS GEORGE  
 WILLS CHESTER  
 WILSON MARTHA  
 WILSON DONALD  
 WILSON ED  
 WILSON A C  
 WILSON CHARLES  
 WILSON ESTATE GLEN  
 WILSON JAMES  
 WILSON MARGARET  
 WINKLER HARRIET  
 WINN M R  
 WINNETT DAVID

► CAPITAL CREDITS continued from page 15

WINSLOW DONALD  
WINSTON JOHN  
WINTER EMMA  
WINTERBOTTOM EST KENNETH  
WISDOM WILLIS  
WITCHER PATRICK  
WITT HARRY  
WITTMAN SHIRLEY  
WOCK J R  
WOEBER CLARENCE  
WOELFEL PAUL  
WOLF ESTATE ERNEST  
WOLFF ALLEN  
WOLFF BETTY  
WOMACK TOM  
WOOD DALE  
WOOD GRACE  
WOOD JEANE  
WOODS EDDIE  
WOODS JULIE  
WOODS ROBERT  
WOODS STELLA  
WOODS TOM  
WOODSBORO CHURCH  
WOODSON ALICE  
WOODSWORTH WALTER  
WOOLDRIDGE DONALD  
WORLEY LEWIS  
WORTHEN ALICE  
WORTHY JACK  
WREN DONALD  
WRIGHT ELMER  
WRIGHT JOYCE

WYATT CECIL  
WYATT CINDY  
WYATT ROBERT  
WYATT WILLIAM  
WYHS DEBORAH  
WYMAN LENA  
WYNN PHILLIP  
YANCIE RICHARD  
YARASHUS ROBERT  
YATES CLOIS  
YAUORNIK ROBERT  
YEAGER MARGIE  
YOTTER GORDON  
YOUNG ALBERT  
YOUNG CARL  
YOUNG MARGIE  
YOUNG TRUST PAUL  
YOUNGBLOOD WILLIAM  
YOUNT THOMAS  
YUNGCK JOSEPH  
ZAKRZEWICZ ROBERT  
ZAMBITO WILLIAM  
ZIEGENFUSS ALYIS  
ZIEGLER KAREN  
ZIMMER DAVID  
ZIMMERMAN DONALD  
ZIMMERMAN LYLE  
ZIMMERMAN MARY  
ZIPPRICH PHYLLIS  
ZUMWALT GEO  
ZUMWALT DONNA  
ZWAHLEN JAMES

## MJM LAUNCHES NEW WEBSITE



Along with a new building, MJM is making moves to refresh it's look. Have you been to our website lately? MJM launched a re-modeled version of [www.mjmec.coop](http://www.mjmec.coop). This website has the same information but with a sleeker design. Check it out today!