

ALONG THE LINES



DEDICATED TO SAFELY PROVIDING RELIABLE SERVICE TO OUR MEMBERS.

JUNE 2026
VOL.19, NO. 6

**VEGETATION
MANAGEMENT**
pg. 2

**2026 SCHOLARSHIP
RECIPIENTS**
pg. 4

**UNCLAIMED CAPITAL
CREDITS LIST**
pgs. 7 - 20

JUNE CALENDAR



June is Home Safety Month

June 8-14: Right-of-Way Professionals Week

June 11: **MJM's Annual Meeting**

June 14: Flag Day

June 19: Juneteenth

June 21: First Day of Summer
Father's Day

THURSDAY, JUNE 11, 2026
**MJM'S 87TH ANNUAL MEETING
OF MEMBERS**

HOLIDAYS OBSERVED:

New Year's Day, Good Friday, Memorial Day,
Independence Day, Labor Day, Veterans Day,
Thanksgiving Day, the day following Thanksgiving,
Christmas Eve, Christmas Day, and New Year's Eve.



OFFICE: 217-707-6156
FAX: 217-854-3918

18300 SHIPMAN ROAD (PO BOX 80)
CARLINVILLE, IL 62626

WWW.MJMEC.COOP



WHY VEGETATION MANAGEMENT MATTERS



MJM PRESIDENT/CEO, JOE HEYEN



There's something timeless about trees. They ground us. They remind us of where we've been, and they stretch toward what's ahead. Here in our community, we take pride in the natural beauty that surrounds us—the shade on a summer afternoon, the colors that mark the changing seasons, the quiet strength of something that grows slowly but endures.

At the same time, we share another responsibility—one that's just as essential to our daily lives. The responsibility to keep the lights on, to power our homes and businesses, to make sure that when you flip a switch, the energy you depend on is there.

That's why MJM works every day to strike a careful balance between preserving the beauty we cherish and delivering the reliable electricity you expect. One of the most important ways we do that is through regular tree trimming.

Now, it may not always be obvious, but keeping lines clear of overgrown vegetation plays a major role in preventing power outages. We've all seen what can happen when severe weather rolls in—strong winds, heavy ice or sudden storms can bring down branches and, with them, power lines and poles. In fact, nearly half of all power outages can be traced back to trees and vegetation coming into contact with electrical infrastructure.

That's why you may notice crews from MJM or our trusted contractors working in neighborhoods throughout the year. Our crews are highly trained and certified, following the latest industry standards to ensure the job is done safely and effectively. Their work might seem routine, but it's anything but—it's a proactive step that helps prevent problems before they start.

And it's not just good practice—it's required. Electric utilities across the country are obligated to manage vegetation near power lines. Scheduled trimming helps remove dead or weakened limbs and keeps fast-growing trees from becoming hazards. It's about staying one step ahead, especially as we prepare for the increasing frequency and intensity of severe weather events.

We're also using new tools and technologies to do this work smarter. Through drone inspections, for example,



we can monitor power lines and surrounding vegetation more efficiently, reducing costs while improving accuracy. These small but powerful tools allow us to identify potential risks early and respond quickly. But beyond reliability and efficiency, there's another reason this work matters: safety.

Electricity is a powerful force, and when trees grow too close to power lines, that power can become dangerous. Branches that touch lines—or even come close—can carry electrical current. Children climbing trees in their own yards may not realize the risk. And during storms, fallen trees can create hazardous conditions not only for families but also for our lineworkers working to restore service.

There's also a financial reality we can't ignore. Preventative maintenance—like tree trimming—is far more cost-effective than repairing widespread damage after an outage. Left unchecked, overgrown vegetation can lead to more frequent disruptions and higher costs for everyone. A thoughtful, strategic vegetation management program helps keep those costs down for our members.

You can help, too. When planting new trees, consider their mature height and distance from nearby power lines. Trees that grow up to 40 feet should be planted at least 25 feet away from overhead lines. Larger trees—those that exceed 40 feet—should be planted at least 50 feet away. If you're landscaping near pad-mounted transformers, keep shrubs at least 10 feet from the front and 4 feet from the sides to allow safe access.

If your neighborhood has underground lines, don't forget to call 811 before digging. It's a simple step that can prevent serious accidents.

At the end of the day, we all want the same thing: a community that's safe, resilient and beautiful. At MJM, we're proud to be part of that effort. Our roots run deep here, just like the trees we work to care for.

ALONGTHELINES

by MJM Electric Cooperative
www.mjmec.coop

18300 SHIPMAN ROAD, PO Box 80
CARLINVILLE, IL 62626

OFFICE: 1-217-707-6156

OFFICE HOURS:
Monday - Friday 7:30 a.m. - 4:00 p.m.

HOW TO REPORT AN OUTAGE:

Call 217-707-6156 or use your **SmartHub app**.

- When you report an outage, give your **name** and **location number**.
- Before calling, check your fuses or circuit breakers.
- Check with your neighbors. Call to report hazardous conditions.

Please do not report outages on Facebook/Social Media.

BOARD OF DIRECTORS

CHAIRMAN: Todd Stewart..... District 8
VICE CHAIRMAN: Charles Huebener..... District 3
SECRETARY: Marcie Tonsor..... District 9
TREASURER: Tyler Heyen..... District 6
 Tim Walsh..... District 1
 Dwayne Milner..... District 2
 Leann Barr..... District 4
 Frank Welling..... District 5
 James Niemann..... District 7

STAFF

Joe Heyen.....President/CEO
 Brian Gunning.....Finance and Accounting Manager
 Jennifer Peterson.....Office Manager
 Matt Eisenmenger.....Operations Manager
 Martin Hinton.....Engineering Manager
 Bob Brandon.....Right of Way Manager

EDITOR

Eric Cooper.....Communications &
Member Services Coordinator

MJM Along the Lines (USPS 854-620) is published monthly for \$4.75 per year, per member by MJM Electric Cooperative, Inc., P.O. Box 80, Carlinville, Illinois 62626. Second-class postage paid at Carlinville, IL. POSTMASTER: Send Address changes to MJM Along the Lines, P.O. Box 80, Carlinville, IL 62626.



A Touchstone Energy® Cooperative

IN THIS ISSUE

- 6 Summer Safety**
Backyard safety tips for the summer months.
- 7-20 Unclaimed Capital Credits List**
Credits from 1987, 1988, and partial from 1989.
- 22 Coordinating Power Across the Grid**
Getting energy from regional to local grids.

SIGN UP FOR AUTO PAY:

Recurring Payments from Checking Accounts, Savings Accounts, Credit Cards, or Debit Cards - The payment will equal the account's net amount due on the day it is drafted, which is the 15th of each month. Unless otherwise stated on your bill. This payment option is available by signing up through SmartHub, online, or contacting MJM at 217-707-6156.

MJM accepts Visa, Discover, and MasterCard payments. If you are signing up a debit or credit card, you must sign up online.

MEMBER TRADING POST

FOR SALE: 2024 Honda Pioneer 1000-5, side by side, excellent condition, loaded with extras, 389 miles, adult driven, transferable warranty, \$20,000. Call: 217-320-1011

FOR SALE: Split Seasoned Fire Wood, pickup truck bed loads \$120 or call for delivery price. Call Leroy @ 618-972-4658

FOR SALE: New starter for a Ford Ranger pickup with 2.3L engine. Paid \$200. Asking \$125. 14 inch aluminum rim for Ford Ranger \$25. 14 inch tire \$10. Call: 618-535-4389

FOR RENT: Inside/covered storage space for boat, camper, or car. Call: 618-334-4298

To list your free ad, email info@mjmec.coop, call 217-707-6156, or mail the ad to MJM Electric Cooperative, P.O. Box 80, Carlinville, IL 62626.

Each ad will run for one month. Some restriction may apply.
No Ads in May edition/Annual Meeting Booklet

2026 THM IEC SCHOLARSHIPS AND MJM SCHOLARSHIPS



At MJM, we believe the key to a brighter future lies in empowering the next generation. That's why electric cooperatives across Illinois are committed to investing in youth through scholarships that honor the legacy of our cooperative family while fueling the dreams and goals of tomorrow's leaders.

The electric cooperatives of Illinois awarded 17 scholarships of \$3,000 each to outstanding students as part of the Thomas H. Moore Illinois Electric Cooperatives (IEC) Memorial Scholarship Program. Scholarships are awarded based on grade point average, college entrance test scores, work and volunteer experience, participation in school and community activities, biographical statement and creative, thoughtful responses to how electric cooperatives can serve their future members, as demonstrated by a short essay.

Elizabeth Hammann of Carlinville High School was selected out of the 278 applicants statewide to receive one of the 17 scholarships.

"This program is about more than financial aid – it's about empowering students," said Joe Heyen, President/CEO of MJM. "While honoring those who came before us, we are investing in the future. Illinois' electric cooperatives are always looking for ways to spark positive change in our communities, and supporting youth through scholarships is one of the most impactful ways we can help shape tomorrow."

In addition to the statewide scholarships, MJM awarded two scholarships of \$1,000 each, and four honorary scholarships of \$500 each to outstanding students of MJM members.

This year, 20 applications were received from the MJM service territory. **Amanda Sypherd** of Litchfield High School and **Mylee Ribble** of Northwestern High School were selected to receive the two MJM scholarships.

The honorary scholarships were awarded to **Riley Owsley** of Carlinville High School, **Annalee Johns** Carlinville High School, **Hannah Truax** of Carlinville High School, and **Madelyn Egelhoff** of Southwestern High School.

"This is a wonderful opportunity for the next wave of bright minds in our co-op communities," said Joe Heyen, President/CEO of MJM. "These scholarships ensure that our future is powered by knowledge, service and a shared commitment to excellence. Together, we can light the way to a brighter tomorrow."



IEC MEMORIAL SCHOLARSHIPS
Elizabeth Hammann
Carlinville High School



2026 MJM SCHOLARSHIPS
Amanda Sypherd
Litchfield High School
Mylee Ribble
Northwestern High School

HONORARY



Riley Owsley
Carlinville High School
Annalee Johns
Carlinville High School



Hannah Truax
Carlinville High School
Madelyn Egelhoff
Southwestern High School

GET THE NOTIFICATIONS YOU WANT WITH SMARTHUB

Sign up for a number of different notifications using our SmartHub app. Pick and choose the ones that you want to receive! Planned outages, regular outages, billing changes, payment due, payment confirmations, auto pay, and many more you can choose from.



Log into your SmartHub account and navigate to the notification screen to manage your notifications. If you need assistance, please do not hesitate to call us during regular business hours at 217-707-6156 and press option #2. You can also find helpful videos on our website: mjmeccoop.com/smarthub-help



Billing Notifications – Bill Available, Credit Card Expiration, Delinquent Notices, Declined Auto Pay, Payment Confirmation, Payment Posted, Payment Reminders.



Service – Planned Power Outages, Power Outage, Power Outage Restored



Miscellaneous – Auto Pay, Login Credentials Change, Personal Info Change

To set up the specific notifications that you want, simply log in to SmartHub and go to: **"Settings > Manage Notifications."**

- **PAY BILLS ONLINE**
- **TRACK YOUR DAILY USAGE**
- **REPORT OUTAGES**
- **GET NOTIFICATIONS**



WHAT'S HAPPENING AT MJM?



March 2026: Dwayne Milner, MJM District 2 Board Director, receives his certificate from the National Rural Electric Cooperatives Association's Credentialed Co-op Director Program. This program consists of five courses that focus on basic governance knowledge and the essential skills required of cooperative directors. The CCD prepares directors to fulfill their fiduciary duty as elected officials serving on behalf of their membership. Congratulations Dwayne!



(L-R) Joe Miles, Jacob Hamilton, Matthew Waters, Brian Bell



April 2026: MJM Linemen assist Cornbelt Energy storm restoration efforts after severe storms broke over 70 poles and left 15,000 Cornbelt members without power.

STAY SAFE THIS SUMMER: BACKYARD ELECTRICAL SAFETY

As the weather warms and you spend more time outdoors, it's essential to prioritize electrical safety. Hidden hazards can pose serious risks.

Here are some critical safety tips to keep your loved ones safe in your backyard.

STAY AWAY FROM POWER LINES

Overhead power lines can be closer than they appear. Teach children never to climb trees near power lines; and never to fly kites, drones, remote-controlled toys or balloons in areas where lines are present. If you see a downed power line, stay at least 50 feet away and report it to your local utility company immediately.

TRAMPOLINE SAFETY

If you're considering an above-ground trampoline, remember to look up for power lines. Children jumping high into the air could come dangerously close to overhead electric lines, which pose a serious risk of shock or electrocution.

Thinking about installing an in-ground trampoline instead? Before you dig, call 811 to have underground utility lines marked. Digging without knowing the location of buried electrical, gas or water lines can result in dangerous utility strikes. This simple step can prevent accidents, service interruptions and costly repairs.

WATER SAFETY

Water and electricity are a dangerous combination. Keep these tips in mind to prevent electrical hazards and create a safe space for swimming, soaking and outdoor fun.

- Ensure pool lights, filters and outdoor outlets have ground fault circuit interrupter (GFCI) protection and inspect them regularly. GFCIs are designed to quickly shut off electrical power if they detect even a small change in electrical current.
- If you notice flickering lights or feel a tingling sensation in the water, exit immediately and contact a professional. Faulty wiring can cause electric shock drowning.
- Avoid using plug-in devices, like radios, speakers or chargers, near water. Opt for battery-operated, waterproof devices to reduce the risk of shock.
- Know what to do in case of an electrical emergency. If someone is shocked, do not enter the water. Turn off the power source, call 911 and use a non-conductive tool, like a fiberglass pool pole, to assist.

- If it starts to rain, unplug electrical equipment, such as string lights, radios, speakers or power tools. Teach children not to touch electrical appliances with wet hands.

OUTDOOR SPORTS

Sports and play areas are a haven for children, but they can also contain hidden electrical hazards. Here's how to protect your loved ones:

- Ensure swings and other tall play structures are far from overhead power lines.
- If you have outdoor lighting for night games, ensure the fixtures are weatherproof and properly installed. Have a professional check for frayed wires or loose connections.
- If kids are playing with a ball and it goes inside a substation fence, teach them never to touch or climb the fence to attempt to retrieve it or any other item. Instead, call your electric utility to safely take care of it.
- Install a weather app on your phone to inform you of weather alerts. Lightning can occur up to 10 miles away from the heart of the storm, so if you hear thunder, seek shelter inside.
- Supervise children around electrical equipment
- Children are naturally curious, which is why they should be kept away from outdoor electrical equipment like utility boxes, transformers and air conditioning units. If you have an outdoor generator, make sure it is stored in a secure, ventilated area that children cannot access and never plug a generator directly into your home's electrical system.

AVOID DIY ELECTRICAL WORK

If you're planning a backyard upgrade, such as installing landscape lighting, sports lighting or poolside outlets, leave the electrical work to licensed electricians. DIY electrical projects can pose serious safety risks to you and your family if done incorrectly.

From poolside play to backyard sports, it's important to be aware of electrical hazards and how to avoid them. By following these guidelines, you can create a home oasis that is both fun and safe.

For more tips on electrical safety, visit [SafeElectricity.org](https://www.SafeElectricity.org).

UNCLAIMED CAPITAL CREDIT CHECKS

In December 2025, MJM returned \$518,774.84 in capital credit allocations to members who purchased electricity from MJM in **1987, 1988, and partial of 1989**. MJM sent checks to inactive members and mailed them to the last known valid address on file. As of April 2026, the list below contains the names of members whose checks were returned to MJM by the post office because of incorrect addresses, or whose checks were not cashed.

Members on this list should contact MJM and provide an updated address so that the check may be reissued. If one of your relatives is on the list and he or she is deceased, we are able to rewrite the check in the name(s) of the member's heir(s). Retired Capital Credits will be automatically abandoned after two years of being unclaimed.

The paperwork can be found online at mjmecc.coop under the Billing Tab > What are Capital Credits? You may also contact MJM directly to request that MJM mail you the paperwork. Early estate retirements are also available allowing families to obtain their family member's remaining capital credits at a discounted rate.

If you need assistance or have questions, please call 217-707-6156 and press option #2 during regular business hours.

Capital Credits: Are they considered taxable income?

If you are a residential customer, you will only receive a 1099 tax form from MJM if your Capital Credit check is more than \$600.

If your electric service is for business purposes, and payments for electricity are deductions in the calculation of taxable income, Capital Credits will affect your income tax liability. You may want to consult with your tax advisor.

UNCLAIMED CHECKS

CUSTOMER NUMBER - MEMBER NAME

7103	A T A #343	19184	ASH PEGGY J
8802	A. T. & T.	21200	ASHBURN MICHELE L
5861	ABBOTT DONNA	18941	ATCHISON JUDITH A
22162	ABBOTT R L	22478	ATHENOUR ERNEST V
13779	ADAMS BETTY V	22256	ATHERTON ROY NII
2446	ADAMS ESTATE PETER J	172000013	ATTEBERY HAROLD C
13285	ADAMS JERRY L	22401	AUBUSCHON JERRY
15860	ADAMS JOHN L	21091	AULABAUGH JAMES F
23380	ADAMS MARY T	21583	AUSTIN CHARLES S JR
16393	ADAMS WILLIAM F JR	5282	AUSTIN EDWIN J
20544	ADAMS WILLIAM J	10061	AUSTIN ROBERT M
21829	ADAMS-CHANCY SUSAN F	17567	AVIS E SMITH ESTATE
23102	ADCOCK PHIL	23282	AYERS RICHARD R
17816	AGANS FARYL W	8245	AYRES CLARA N
22477	AGNEY DONALD L	10694	AYRES DONALD V
1420013957	AKRIDGE GARY	23006	AYRES LISA D
1430013957	AKRIDGE MICHAEL	13109	AYRES RAYMOND O
7874	ALBERT DONALD W	22149	B & C AUTO SALVAGE
7808	ALBRECHT BETTY	20032	BACHMANN JULIUS W
14484	ALBRIGHT CLINTON	19117	BACON ROBERT JR
5865	ALEXANDER FAE A	13137	BAESER VERA C
1001	ALEXANDER J STEVEN	10198	BAILEY ZELPHIA M
5014	ALLEN GORDON	2787	BAIN CARL W
23466	ALLEN JAMES M	19943	BAKER CAROL E
21981	ALLEN JUDY F	17097	BAKER EDWARD
10785	ALLEN KENNETH V	2255	BAKER LUCILLE A
19828	ALLEN ROBERT E	12309	BALL LLOYD
22284	ALLGOOD JAMES F	1530010511	BALLANTYNE JAMES
21657	ALLIN WILLIAM H	9407	BALLARD EVELYN M
9800	ALTEVOGT SHARON	19964	BALLARD JAMES W JR
1136	ALWARD FLORENCE M	13403	BALLARD ROY E SR
20835	AMBROSE ROGER W	13902	BALLARD WANDA L
7202	ANDERSON DEAN L	23226	BANC PLUS MORTGAGE CORP.
15251	ANDERSON EDWARD D	19315	BANDY IRMA L
22453	ANDERSON FRED N	213	BANGERT EVA
17623	ANDERSON KEITH W	21906	BANKS DOUGLAS R
17779	ANDERSON LINN A	10465	BANKS ESTATE LEWIS
14581	ANDERSON MARY A	22515	BARACH CONNIE L
18994	ANDERSON-JACKSON MARILYN	21599	BARBIER WALTER E 3
2786	ANDRES CLYDE T	17934	BARD THEODORE F
7900	ANDREW JAMES W	16143	BARKER ANN E
19361	ANDREWS J DOUGLAS	4937	BARNARD LLOYD G
20175	ANGELLY JOYCE	23071	BARNES ROBERT G
13999	ANTOINE SHERRII L	2389	BARNETT CHRISTIAN CHURCH
1874	APPLEGATE ROY	23232	BARNETT JAMES W
20190	APPONYI DANIEL	6949	BARNETT WANDA F
19362	ARNETT CHARLES A	1530015635	BARNHART CLINTON
22736	ARNETT DUANE	22676	BARNHOUSE BILL
6417	ARNETT JEANNIE	15802	BARRETT ED
18606	ARNOLD CARL W	14943	BARRINGTON TRUMAN E
18239	ARNOLD EST MILDRED M	20364	BARRY GREG
20703	ARNOLD JOHN W	21	BARRY HENRY A
16810	ARP BETTY	22721	BARTLETT KELLI
1420009921	ARRAS NORMA	22184	BARTLETT RICHARD K JR
22250	ARRO JOE A	10293	BARTLETT WILLIAM C
11202	ARTER ESTATE JOHN V	15933	BARTON CARROLL B

14081	BASSO MARION C JR	3539	BENISH BROTHERS	1630003996	BOATMAN ROSE	15086	BREITWISER RICHARD L
5015	BATES LILLIAN	20202	BENJAMIN JOHN R	22985	BOBLICK WILLIAM E	20017	BRICKER RONALD D
18532	BATTLES SCOTT	8336	BENNER J L	21739	BOCK CHRISTOPHER L	16496	BRIDGES AUBREY B
14145	BATTUELLO BARBARA	13669	BENNETT EDWIN W SR	982	BOCK EVELYN	2125	BRIDGES MARY L
15970	BATTUELLO DONALD E	22018	BENNETT MICHAEL L	9929	BOCKSTRUCK R D	19656	BRIDGES PAUL A
1420014145	BATTUELLO KATHERINE	21426	BENTON KEVIN T	15084	BOEHLER DONALD J	19664	BRIDGES STEVE
14275	BATTUELLO KENNETH	8531	BERGER ROBERT	2159	BOEHME MILDA A	20108	BRIGGS JERRY D
23347	BAUER ALEX W	19107	BERGMAN RICHARD L	11061	BOGGS ARTHUR	16403	BRIGGS THEODORE R
20645	BAUER JOHNNY H	18691	BERRY ROBERT J	1611000237	BOHLMeyer DAN	12267	BRIMBERRY LARRY W
19352	BAUER ROBERT V	11594	BERTINETTI WILMA	1670000237	BOHLMeyer MARSHALL	21231	BRINKMAN CRIS
20964	BAUER VERONICA	7011	BESSEMER ARLAS M	1640002790	BOHLMeyer MARSHALL	14432	BRISCOE WILTZ
9866	BAUGH LARRY W	3997	BETHEL M J	238	BOHLMeyer NETTIE	2612	BROHAMMER GEORGE
20033	BAULE EST EDWIN O	2785	BETHEL METHODIST	1680000237	BOHLMeyer REBECCA	17003	BROOKS JAMES W
19491	BAUM JOHN C		CHURCH	9492	BOHN MARION	22496	BROOKS SANDRA K
1620007802	BAUMGARTNER LOUIS	6617	BETHEL METHODIST	21659	BOLES LEWIS	21860	BROWERS WILLIAM H
15514	BAUR EVERETT		PARSONAGE	19626	BOLLINGER LARRY A	22951	BROWN ANCIL R
22701	BAUR STEVEN L	772	BETHLEHEM BAPTIST	23036	BOLLMAN DAVID G	23300	BROWN CYNTHIA
19162	BEARD LARRY D		CHURCH	17389	BOMBARDIERE JESSIE	14433	BROWN DALE C
8005	BEARD ORA	1670004077	BETTIS DAKOTA J	22531	BONDY DENNIS A	2489	BROWN EDITH L
979	BEASLEY ESTATE BESSIE L	17167	BETTIS LARRY D	15402	BONETTO DEANNE	21359	BROWN GALE J
19130	BEASLEY WILBUR L	22977	BETTORF ROBERT B	12126	BOOHER RONALD	1430002064	BROWN GLENN DOUGLAS
10064	BEAVER JOHN F	8415	BETTS WESLEY E	21890	BOOTEN LARRY N	14541	BROWN JACK L
15803	BECHTOLD EUGENE C	13643	BICKHAUS ERNEST R	20747	BOOTH RICHARD	22608	BROWN JOSEPH C
1330009341	BECK DOUG	3077	BIERBAUM CAROL L	22435	BOOTHE JACK	20651	BROWN KENNETH D
19937	BECK GLEN JR	16492	BIERBAUM HAROLD	21093	BOPP GERALD D	8960	BROWN MARCIDUS
21955	BECK MARK A	23292	BIERMAN ELIZABETH A	21099	BOPP JERRY	11149	BROWN NORMA M
1650003211	BECK REBECCA	21431	BIGGINS HOMER H	21460	BORDING CLIFFORD	10468	BROWN RAYMOND S
23017	BECKER BARBARA K	1520004049	BILBRUCK ROBERT	6915	BOREE JOE W	21266	BROWN RONALD J
23258	BECKER CECIL E	23150	BILLINGSLEA RICHARD T	2690	BORMAN BYRON	6496	BROWN WILLIAM R
22927	BECKER MICHAEL	1370002929	BILLINGTON CAROL A	22403	BOSS HENRY J	13602	BROWNELL ANNA
16397	BECKER VIRGINIA	1440011794	BILLINGTON DAN	10119	BOSTON HERMAN	22379	BROWNING GLENN
14398	BECKWITH JEAN	1440009408	BILLINGTON DAN	6702	BOTT FLOYD E	21991	BRUCE ROBERT
8716	BEDWELL MARIE E	1470009408	BILLINGTON DAVID	15765	BOUCHER JOSEPH F	19296	BRUEGGEMAN BROS
20227	BEELER CARL E	22993	BINGHAM ELVIN D	17700	BOUILLON CHARLES H	22673	BRUEGGEMAN CLAY D
23040	BEHAN PATRICK E	20065	BIRDSONG JAMES L	243	BOUILLON HARRY A	920016981	BRUNDIES JANE L
7806	BEHME FLOYD A	9047	BIRKENKAMP FRANK F	21488	BOUILLON MARK S	2035	BRUNDIES JOSEPH O
22054	BEHOF JOHN	12969	BIRKENKAMP FRED	5965	BOUILLON WILLARD	9645	BRUNSTEIN EST KENNETH
14220	BEHRINGER DAN F JR	10367	BISHOP JOE	22691	BOULANGER RODERICK D	2958	BRUNSTEIN FRED C
17551	BEHRINGER JOHN	11296	BISHOP ROBERT L	22185	BOULANGER ROSE I	1930001927	BRUNTJEN DEANNA
22955	BEHRINGER ROBERT D	18015	BIVENS LEONARD W	18098	BOURLAND JUIQUITA	4230	BRYANT JESS J
1530014139	BEICHLER GREG	22447	BLACKBURN PAUL W	1410011325	BOWERS ROBERT	10469	BUCHHOLZ LLOYD E
1550014139	BEICHLER NORMAN	7977	BLACKLOCK WILLIAM L	14829	BOWLES JOHN	22952	BUCKLEY DENNIS J
23454	BEIERMANN KATHY J	12515	BLACKORBY KENNETH L	21660	BOWMAN DAVID	9840	BUCKLEY HARRY L
21374	BEIERMANN RANDAL J	5512	BLACKORBY LEON	19378	BOWMAN JOHN A	20176	BUCKLEY HARRY R
1340008453	BEIERMANN RAYMOND	20578	BLAESER JOHN EJ R	23024	BOWMAN RICHARD L	22521	BUDDE CHRISTOPHER L
22683	BEISER CONCRETE CO INC	21036	BLAIR BILLY E JR	10265	BOZARTH BRUCE T	21939	BUEHRER MARTIN L
2040013374	BEISER DAVID	10924	BLAIR FRANK JR	22800	BRACKETT SHARON	12088	BUIS GEORGE L
10963	BEISER DOROTHY	15764	BLAIR JOHN H JR	4816	BRACKMAN ERNA	14434	BUNT WILLIAM T
1420001477	BEISER DOROTHY	21139	BLAIR MERL E	5514	BRACKMAN LOUIS W	263	BUNTE WILLIAM F
13374	BEISER DUANE	20692	BLAKE RICHARD R	5871	BRALEY EDWIN C	13996	BURCH EARLENE
1477	BEISER MARJORIE	15589	BLAND PAUL	20765	BRANCH DAVID L	9440	BURFORD DOROTHY L
8335	BELCHER KENNETH P	21982	BLAND RICHARD N	29	BRANDT CHARLES JR	21891	BURGARD ARTHUR R
22968	BELCHER ROBIN M	21307	BLANFORD ROY C	23558	BRANHAM ANDREA	269	BURGDORFF ALBERT
9970	BELL ALEEN	15974	BLANFORD STEPHEN R	22780	BRANHAM DARRIN K	21655	BURGE MARK C
22170	BELL CATHERINE C	22670	BLANTON CAROL	14708	BRANHAM MARCELLA	22812	BURGER TERRY L
22930	BELL DONALD W	21646	BLASA BOBBY	21816	BRANHAM TINA M	22028	BURGESS THOMAS L
14650	BELL ROY	9973	BLASA MELODY	17873	BRATTEN SAMUEL E	22078	BURJES DALE
12568	BELT HELEN M	19908	BLOOM MARY E	17493	BRAY SLATEN M	14148	BURLESON EST JOSEPH O
1621	BELUSKO MIKE	16035	BLOOME DANIEL R	18693	BRECKON EUGENE	22390	BURNETT AURELIA
13529	BENEDICT K	16493	BLOTEVOGEL RICHARD	22533	BREEDEN RONALD L	14830	BURNS RICHARD P
14998	BENEFIEL MARTHA J	14435	BLUNT LEON M	11297	BREITWEISER MORRIS L	20860	BURRELL TOM

15975	BURRIS JACK L	9015	CAUDLE DARRELL E	12809	COLLINS & KRUSE	18317	CRABTREE JERRY D
19735	BURRIS JAMES A	7782	CAVENY D. ANN	14543	COLLINS EMMETT E	3159	CRABTREE JOSEPHINE M
10120	BURTON ANNIE L	21462	CELY MONTE A	6384	COLLINS EST LEO J	20568	CRAFT LARRY K
21839	BUSCH DORIS J	21747	CENTRAL PRODUCTION	20451	COLLINS LARRY	15214	CRAIG WILLIAM
14368	BUSCH LOUISE		CREDIT ASSOC	19666	COLLINS LEONARD A	20954	CRAIN WILLIAM A
21940	BUSHNELL RICK	14051	CERVANTES LEONARD	12810	COLLINS RUBY A	16411	CRAINE ROBERT E
22218	BUSHONG MICHAEL	952	CHALLACOMBE ROBERT L	18418	COLLINS RUTH F	13224	CRAMER DEE
19556	BUSKE ELLA C	17171	CHAMBERS KATIE	5750	COLUMBIANA SEED CO	1420014003	CRANE PATRICIA
5967	BUSSE EDWARD A	13962	CHANCE CHARLES	12181	COLWELL LYDIA P	19601	CRAUSE ROBERT W
14710	BUTCHER WILLARD D	18233	CHANDLER DAVID L	13346	COMBS DEE	10955	CRAWFORD SHARON
16347	BUTLER CHARLES	901	CHANDLER RALPH	20140	COMMUNITY BANK OF	22153	CRAWFORD TERRY
16406	BUTLER DENNIS J	17268	CHAPMAN RALPH F		DIVERNON	11922	CRENSHAW WILLIAM L JR
17174	BUTLER JACK L	1520004732	CHAPMAN ROSEMARY	23377	COMPTON CHARLES R	17220	CREWS JAMES B
22595	BUTTS VIRGIL M	3722	CHAPPELEAR MABEL	1440007369	COMPTON CLAYTON O	22638	CRIDER RAYMOND L
1630017594	BYXBE DONNA	1430007147	CHAPPELL LINDA	21489	COMPTON DOIL R	6260	CRIBE ROE
8457	CAHOKIA BEAGLE CLUB	3781	CHARLTON ESTATE DIMPLE E	16500	CONLEE ROGER C	15812	CRIST SOD CO INC
23061	CAIMI THOMAS D	4732	CHARLTON JUANITA	14246	CONNER ESTATE ANNEVA B	21888	CROCKER SAMUEL J
18192	CALDWELL ENGINEERING CO	21837	CHARTER COMMUNICATIONS	18877	CONNER RICHARD L	17980	CROOK THOMAS C
23002	CALMESE LONNIE C	16585	CHATELAIN EST DOROTHY M	19317	CONNER WILLIAM F	20729	CROPMATE CO
23224	CALVIN LARRY L	19647	CHATTMAN WILLIE	22334	CONNERS JANET M	18338	CROSS CHARLES E
1920017496	CAMBRON FRANKLIN	22925	CHENOWETH KAREN L	3380	CONNORS DOROTHY M	18517	CROSSLEY CURTIS M SR
19800	CAMBRON NORMAN	1346	CHICAGO & NORTHWESTERN	23328	CONOVER BRUCE B	20557	CROSSROAD'S ENTERPRISES INC.
15258	CAMERER HAROLD	22386	CHICAGO MISSOURI WESTERN RR	23109	COOK CARL	14806	CROUCH KENNETH N
2040007582	CAMERON MICHAEL T	22956	CHILDERS VALERIA	18351	COOK ELDON A	16501	CROUTERS MICHAEL R
1530014711	CAMPBELL CONNIE K	7517	CHILDRESS JAMES H	5751	COOK LEODA	20392	CROW CHARLES W
8221	CAMPBELL DICK W	21119	CHILTON-YATES LINDA S	17080	COOK RUTH W	21443	CROWE MARK W
19333	CAMPBELL DONALD L	19056	CHISM JERRY	19870	COOK WILLIAM T	22759	CRULL DAVID
18990	CAMPBELL EDWARD E	12240	CHRISTEN NEIL M	11257	COOKE ROBERT K	10072	CRULL NETTIE I
6332	CAMPBELL GILBERT	16635	CHRISTIAN JOHN R	6782	COOL NORMAN J	23206	CRULL RANDALL L
21432	CAMPBELL GILBERT J	22085	CHRISTOFF NICK	21904	COOLEY JERALD D JR	18458	CRULL THOMAS R
21716	CAMPBELL JASPER L	1320007797	CHRISTOPHER MARILYN	12401	COOLEY SANDRA L	14375	CRUTHIS MERVIN L
8295	CAMPBELL MARY J	23329	CHUTE RODNEY C	16874	COONROD HELEN	14229	CULP ESTHER
1330	CAMPBELL NORMAN SR	17021	CINCEBOX IRENE	20164	COOP G A	14085	CUMMINGS DONALD L
9542	CAMPBELL ROBERT L	20185	CLAGG SHARON L	22989	COOP MICHAEL G	7002	CUMMINGS ELLEN
11350	CANADAY DAVID A	1720018588	CLANTON WESLEY G	21629	COOPER KURTIS	4509	CUMPTON MELBA G
15728	CANNON ESTATE EDWARD A	18248	CLARK BERNARD M	3633	COPE CLAUDE	13243	CUNNINGHAM HOWARD J
9765	CANNON JESSE L	16226	CLARK CHARLES D	19206	COPE DANIEL A	16415	CURDIE JOSEPH M
7237	CANNON VIRGIL	4108	CLARK CLOES M	23389	COPELAND TIMOTHY R	17727	CURRY EDDIE SR
23041	CARL RANDY	3553	CLARK CLYDE E	22429	COPELAND WILLIAM A	14807	CURTIS AVERY
22117	CARLIN-VILLA MOTEL	19717	CLARK DARWIN P	1750000306	CORBETT DEBRA	863	CUTLER NORA
22642	CARLINVILLE TERRACE	23072	CLARK DENNIS W	15319	CORDES MICHAEL	7635	CZARNIK ROSE
17175	CARLSON EDNA	22790	CLARK RONALD J	15981	CORDUM TERRY	15985	CZERNIEWSKI S E
22333	CARMEAN MERYLE	19880	CLARK RUTH D	3634	CORNELIUS PAUL M	19566	D & L HOUCK INDUSTRIES INC.
1920	CARNAHAN EST LOTTIE E	22171	CLAYTON JAMES D	14247	CORY PAUL J	1320004005	DABBS CINDY
22448	CARNEY DANIEL C	10637	CLAYTON JIM	22663	CORY WESLEY W	22357	DABBS CYNTHIA A
21628	CARPITA CLEO M	22286	CLAYTOR PATRICK D	2197	COSTELLO EST WANITA M	2796	DABBS MORRIS L
10396	CARRIKER HARRY G	1430004782	CLEVINGER HOPE	22559	COTHAM TERRY	20166	DAGGETT KENNETH J
17877	CARROLL GEORGE	19500	CLOTHIER CARL L	15982	COTTINGHAM DORIS I	3788	DAIGGER CHARLES H
1246	CARTER JAMES R	5444	CLOTHIER SANDRA K	19318	COVARRUBIAS RITA C	1330000452	DALEY CARLENE
16270	CARTWRIGHT GARY G	7446	COAKLEY ROBERT L	20431	COWAN TIMOTHY J	23271	DAMM DOROTHY D
15638	CARTWRIGHT JIM	21850	COBB PEGGY	2141	COX BETTY J	22056	DANIEL THOMAS G
23294	CARTY DANNY R	14479	COCHRAN ALONZO B	14768	COX DAVID L	12129	DANIELS CHARLINE O
22266	CARTY MARVIN P	17593	COCHRAN JODY L	10582	COX ERNEST J JR	18147	DANIELS COLEEN J
1420002064	CARTY PAT	19414	COCHRAN SCOTT	22909	COX ESTATE THEODORE W	1340006465	DANIELS GERI
17286	CASHEN ROBERT A	23455	CODY AUDREY	22583	COX HAROLD M	10673	DANIELS VERNA H
21601	CASTELLI JAMES H SR	23011	COLBERT JANE M	5523	COX LESLIE J	7240	DANKENBRING DONALD W
22129	CASTLEBERRY ALLAN	20757	COLBERT THEO A	5520	COX MARILYN L	16351	DANN KENNETH A
18183	CASTLEBERRY BILLY	13787	COLE WILLIAM M	6643	COX RUSSELL M	22660	DARLING SCOTT
8762	CATES BARBARA J	12619	COLEMAN MICHAEL H	12316	COYTE BEN	19406	DARR JEFF
14491	CATHEY THOMAS C JR	16826	COLEMAN ROBERT	3786	COZART HAROLD E	1520010240	DARR ANTIONETTE
22084	CATO JAMES E	1420008496	COLEMAN WANDA	20177	COZART JAMES R	20801	DARR DONALD L

19635	DARR DONNA	20311	DESERLIA DANIEL E	20345	DRIVER JAMES L	15875	ELLER ROY R JR
15342	DARR LARRY D	14949	DEVENING WILLIAM	7584	DRIVER ROBERT F	21211	ELLINGER WILLIAM W
18065	DART DARRELL W	14495	DEVERELL CLIFFORD	18935	DRURY HELEN	10586	ELLINGTON CHARLES W
1920016504	DAUGHERTY FRAN	17465	DEVRIES DEAN W	21769	DUBLO CHARLES L	15409	ELLIOTT DEBORAH L
17017	DAUGHERTY FRANCES	1370005075	DEVRIES DONALD	21420	DUCKETT JAMES L	11383	ELLIOTT MAXINE
18543	DAUGHERTY RICHARD C	19521	DEVRIES E J	320	DUELLO FAMILY LAND TRUST	4082	ELLIOTT WAYNE
19016	DAUGHERTY RICHARD W	1350005075	DEVRIES JAMES	11152	DUFF CHARLES	22475	ELLIOTT WAYNE W
3966	DAUM MARY A	10076	DEVRIES SHARON L	12817	DUFF CHARLES E	8600	ELLIS BERT
20802	DAVENPORT PEGGY	19496	DEWITT TERRANCE L	15091	DUFF JERRYL S	9127	ELLIS FLOYD D
20808	DAVENPORT PEGGY	21130	DEWITT VERNON	1930007610	DUGAN DEBRA K	9692	ELLIS LARRY A
12492	DAVES JUNIOR R	1827	DEWITT WILLIS W	22634	DUGAN TERRI	20066	ELLIS WILLIAM T
7939	DAVINROY LEO	1848	DEY KATHRYN	1330000777	DUGGER JAMES	22058	ELLO STEVE
9471	DAVIS BERNARD E	16644	DICK LEROY	7638	DUNCAN FRANK F	48	ELMORE ROBERT L
21767	DAVIS BILLY C	13213	DICKERMAN NORMAN	22372	DUNCAN WILLIAM F JR	20587	ELSAH HILLS SWIM CLUB
2020004875	DAVIS BROOKE	10932	DICKERSON THELMA	23175	DUNHAM FRANK	12525	ELSON MAE F
20512	DAVIS CHARLES E JR	23089	DICKIE JOSEPH W	5529	DUNHAM JOSEPH	19718	ELY JOSEPH L
22586	DAVIS DALE A	23172	DIECKMANN MARK P	18044	DUNHAM TIMOTHY C	5637	EMDE ESTATE DORA N
22219	DAVIS DAVID L	23442	DIEPENBROCK RICHARD A	20919	DUNN DENZIL A	21253	EMERSON FORREST
1920007610	DAVIS DAVID S	7583	DIERKES HENRY A	23376	DUNN EDWARD	21481	EMERY BETTY C
21804	DAVIS DONALD A	12447	DIERKING NOLAN	13773	DUNN EDWARD J	2262	EMERY IMOGENE
12399	DAVIS ELVIS I	3729	DIESEN LINDA	22236	DUNSE SANDRA L	22571	EMMONS MARGARET L
10832	DAVIS ESTATE MARTELL F	13534	DIESSELHORST ROBERT	20244	DUNSING DONALD W	18828	EMMONS WANDA P
10209	DAVIS HARVEY E JR	8080	DIETZ BART A	23025	DURBIN KENNA J	6031	ENGELMAN HAROLD W
14018	DAVIS JIMMY D	10676	DILLEY BRUCE L	14752	DURBIN ROBERT F	18380	ENGLAND MELISSA
22380	DAVIS JOHN T	14902	DILLEY DARRELL C	1470010022	DURSTINE DOROTHY A	22868	ENGLE DAVID L
23251	DAVIS KEVIN D	17540	DILLEY GARY B	23117	DWORSACK JOHN	9311	ENKE ANNA L
22368	DAVIS LORI D	12977	DITTUS NIMROD W	19119	DYCKMAN PAMELA M	1640003996	ENSLOW BEULAH
20138	DAVIS ROBERT L	10704	DIX HUGH W	22075	DYER SHERRY L	18196	ENVIRONMENTAL SITE
14310	DAVIS TAMMY	17040	DOBRINICH THOMAS	13858	EADS BONNIE L		DEVELOPERS
13448	DAVIS WILSON	9837	DODSON MINNIE W	22644	EADS PAUL H	21665	EPPERSON THOMAS H SR
23488	DAWSON WILLIAM R	20810	DOELLER CHRIS A	13981	EAGLE MANAGEMENT	6159	ERB PAUL E
14205	DAY CAROL L	7241	DOERR LESTER	12408	EAKER CHAS	21009	ERDEL DETLEF P
23227	DAY SHARON L	1420002502	DOLAN SHARON	8858	EARP J T	13	ERNEST ROBERT D
21942	DAYKA EUGENE	1960004919	DOLDER MARC	9982	EAST DOROTHY A	13047	ERNST BARBARA
18513	DE LUDE OLIVE E	1970004919	DOLDER SUMMER	13302	EBERHART MARSHA	12410	ERNST CHARLES
1920003966	DEAN JEANETTE	17784	DOLES NOBLE J	2130011547	EDDINGTON SHERRY K	327	ERNST ESTATE MILO
7209	DEAN SAM	7141	DONALDSON GLORIA A	22570	EDDY ROBERT L	22910	ERT-ENSR INC
1940005074	DEATHERAGE HARVEY W III	10358	DONNELL JENNIFER	11303	EDELEN D R	8147	ERWIN NORMAN
3562	DEBARR FRED K	17146	DORAL COUNTRY MANOR	17408	EDKO OIL PROPERTIES	3955	ESAREY ALBERT D
20620	DEGERLIA THOMAS A	20009	DORKO NANCY J	14	EDMISTON DAVID	13535	ESAREY CURTIS
13673	DEGLER CHARLES	11849	DORLAQUE SAM	21360	EDSALL JOHN H	22467	ESAREY DONALD R
18283	DEGLER ROBERT	22785	DORSEY JAMES	20899	EDWARDS CECIL L	13732	EST. OF CAROL SCHOENEWEIS
22966	DEGRYSE GAYE L	17443	DORSEY WILLIE	22455	EDWARDS FRANK D	3274	EST. OF HELEN KLUNK
19855	DEHNE MERLE W	20655	DOTY WANDA F	3725	EDWARDS GRACE	20167	EST. OF MAURICE FRANZ
22542	DEIMEKE TIM	21102	DOUBLE-D SAND & GRAVEL	1420017334	EDWARDS JEANNE L	12142	EST. OF VIRGINIA KUHLINE
18759	DELANEY TAYLOR A	4880	DOUGHTY VERNON S	1460	EDWARDS JOHN C	7032	ESTELL ESTHER
19994	DELEHANTY MICHAEL E	11305	DOUGLAS LINDA	3462	EDWARDS PAULINE J	1330000740	ESTRELLA PEGGY
21373	DELHI COUNTRY INN	11487	DOUGLAS NORMAN	323	EGGERS FRANCES	9192	EVANS SYLVIA
18330	DELL VERNON E	3906	DOWLAND HAZEL F	4129	EGGERS RUSSELL	23336	EVEANS RICHARD W SR
1340002442	DELONG RUTH S	1360002970	DOWLAND RICHARD	15408	EHLERT WALTER H	1460005180	EVERING RICHARD
22057	DELP DAVID J	10758	DOWLAND WENDELL	7284	EICHEN CHARLES K	19553	EWING BONNIE
23366	DEMARTINI JAMES D	21978	DOWLLAR LOUIS A	12909	EIRVON ALFORD SR	17199	EYMAN ZOLA F
900016949	DEMPSEY JULIANNA	19273	DOWN WILLIAM E	17614	EISKANT GUS	18550	FACKLER RICHARD T
16190	DENEFF GENE	3563	DOWNNS GLYNN L	17715	ELDRED J B	19043	FAHEY MICHAEL A
13588	DENNIS EDNA	7321	DOWNNS JACK E	2337	ELDRIDGE ALFRED	9083	FAHEY WILLIAM D
7877	DENNIS JACK D	22639	DOWNNS JACKIE	19864	ELDRIDGE DAVID R	5764	FALKNER GRACIA M
15476	DENTON GENEVA	22664	DRAINER ED D	21576	ELDRIDGE GREG	10429	FALLIN KENNETH D
17701	DEPPER HAROLD W	6644	DREW EVELYN	23076	ELFGEN KRIEG L	22919	FARMS B & B
20402	DEPPER MAURICE	7703	DREW FLOYD	6091	ELIOTT DORIS	19911	FARQUHAR R L
22975	DEPRENGER CLIFFORD R	1657	DREW MARGARET	18851	ELLER DAVID L	23084	FARRELL JOHN
		10479	DREWEL MELVIN J	22021	ELLER MICKEY E	17388	FATH BILL

20861	FEARNO GLENDA L	23065	FOREST LAKES INC	6652	GEILER JOYCE	22031	GOOTEE THOMAS P
8035	FEATHERSTONE CHARLES E	900016935	FORSYTHE ATWOOD	12055	GEISER OLIVER A	23238	GORDON FRANK J
5699	FEATHERSTONE JERRY L	22086	FORSYTHE SUSAN D	15479	GEISLER CHARLES T	19217	GORDON ROSANNE
17596	FEATHERSTONE JERRY L	17615	FOSTER ALLEN R	1420008012	GEISLER VICKI L	21089	GORMAN ROBERT F
3463	FEENY BETTY L	22066	FOSTER HARRIET C	13216	GELDBACH WARREN J	23358	GOSNELL GUY R
22839	FEEZEL ALAN R	13680	FOWLER MALCOLM	14250	GENINATTI MARY E	14775	GOSS JANICE K
16989	FELDMAN KENNETH	1430010836	FOX THOMAS D	1940005769	GENTA BOB	3172	GOSS SYLVIA A
21702	FELDMAN LEO	21642	FOX VIRGIL	12679	GENTRY VICKI	13351	GRACE SHARON L
15217	FELDMANN IRVIN W	2991	FRALEY BILLY L	21213	GEORGE CATHERINE	18405	GRACEY WILLIAM E
22102	FELTES STEPHEN P	5807	FRANK O ROTHE SR REV	20902	GERBER E L	20606	GRADY HOWARD L
12294	FENNELL BILLIE L		LIVING TRUST	12017	GERBER ROBERT A	22854	GRADY ROY
22406	FENTON BRIAN	10378	FRANK RALPH	9286	GERDES ARLENE C	22079	GRAHAM DAVID H
14448	FENTON CLARENCE E	19020	FRANKLIN CLARENCE	8352	GERDES ERVIN H	4241	GRAHAM ESTATE EARL C
1430010022	FENTON DENNIS L	1828	FRANKLIN LENA E	1925	GERDES GLADYS	20393	GRAHAM MARION
1450010022	FENTON DWAIN S	22131	FRASER DONALD L	1420009286	GERDES LONNIE C	8728	GRANER EST MILAN G
18597	FENTON GEORGE J	7663	FRAZIER LOIS M	6502	GERDES MICHAEL	15775	GRAY HANNAH M
14589	FENTON LINDA L	3958	FRAZIER RUTH	10761	GERDINE GROVER Z	19698	GRAY HERMAN D
1273	FENTON NELSON	23124	FREDENBERG EARL L	7398	GERECKE PATRICIA J	11306	GRAY JAMES A
20127	FENTON VICKI L	17148	FREE JERRY L	4888	GERMAN GEORGE H	23119	GRAY JONATHAN F
19777	FENWICK KENNETH C	19778	FREINER SHARON K	4577	GETTINGS DORIS J	13306	GRAY MINNIE J
23275	FERANDO GREG	16724	FRENCH DAVID E	13414	GETTINGS I L	4700	GRAY TODD E
18555	FERBER PATRICIA W	19892	FRERICHS GEORGE F	5770	GETTINGS WILLIAM JR	16782	GREELING BILLY G
333	FERENBACH BERL I	20338	FREY MAURICE G	15004	GHERE BILLY L SR	20821	GREEN EDWARD W
16876	FERGUSON DONALD S JR	17747	FRICKE HAROLD F	23180	GIANNUZZI LINDA G	19502	GREEN ELDON
4456	FERGUSON EDWARD C	21845	FRIEDLINE DORIS J	15268	GIBBONS DENNIS N	20403	GREEN ESTATE CALVIN E
20354	FERGUSON JEFF E	21463	FRISCHHOLZ CHRIS	15147	GIBBS JENNY	21847	GREEN HORN RANCH
7493	FERGUSON LEONARD	14880	FRIZZO LANIDA	21294	GIBBS NATHAN H	23130	GREEN JIMMY L
21993	FERGUSON MINNIE E	1920006207	FRY GARY	21615	GIBBS THEODORE E	14122	GREEN JOHN
12269	FERGUSON OLIVER	10485	FRY NINA G	21944	GIBERSON KENNETH W	11332	GREENE JAMES E
22418	FERJANCIC WELBY	11756	FRYE HARRY	21269	GIBSON DEAN E	22469	GREENE O J
14636	FESSLER HELEN M	14061	FRYE MARY	14854	GIBSON DON	22148	GREENWALT JAY
3092	FESSLER MARY M	23240	FUCHS DAVID	2514	GIBSON GEORGE E	23131	GREENWOOD GARY W
21630	FICHTENMAYER ROBERT J	20094	FUDURICH JOHN L	21814	GIESEKING DARRELL	9166	GREGORY IRENE
19795	FIEKER THEODORE F	2099	FUESS ELLA	13120	GILBERT EDWIN L	13373	GREGORY STANLEY A
12414	FIFE CHARLES	15817	FULKERSON ELLEN S	16903	GILL HAROLD L	20394	GREGORY WALTER J
5501	FILE KATHLEEN L	18294	FULLER ROBERTA L	18674	GILLER ROBERT D	12458	GRELL MARY E
18551	FINKE EDWARD E	13649	FULTON MARTIN J SR	16829	GILLESPIE CEMETERY	1320003705	GREY SHIRLEY
12526	FINNEGAN ROGER W	14249	FUNK ESTATE OTTO E		ASSOCIATION	4960	GRIESEMER ALMA
20955	FIRST NATIONAL BANK OF STAUNTON	12695	GAABO HELEN M	1245	GILLESPIE COUNTRY CLUB	2014	GRIFFEL MAXINE
8420	FISCHER HILBERT J	865	GABBETT RICHARD	20904	GILLESPIE ROBERT E	20100	GRIFFIN DEMPSEY
16308	FISH GENE	21647	GABLE JOSEPH	9874	GILLHAM FRED C	20452	GRIFFIN FRANCIS J
20134	FISHER BARBARA A	22237	GAD TOM	21408	GILLILAND RICHARD	14335	GRIFFIN PEARLINO
6734	FISHER F K	15645	GAFFNEY CHARLES P	1550004732	GILMORE CECLIA	20730	GRIFFITH GERALD W
22498	FISHER STEVEN E	17381	GAGNON ALLEN E	17731	GILREATH CURTIS E	19454	GRIFFITH RICHARD L
12527	FITE HARRY D	21021	GAGNOR FREDA E	1420007147	GILWORTH ROBERT	21862	GRIFFITH WALTER E
19760	FITZGERREL NEIL L	16419	GAHR GENE	22359	GIMLIN FRANK JR	17179	GRIGG PATRICIA A
336	FITZGIBBONS JAMES	4238	GAHR GENE A	23128	GIMLIN SARAH A	22223	GRISWOLD DAVID R
9696	FLACH ELSIE	1830014549	GALLAY ERIC	1520007737	GIMLIN WILLIAM	21713	GROPPEL JEFFERY C
21651	FLAVIN MICHAEL M	20670	GALORE CHARLES D	22307	GIPSON RHODA	6559	GROPPEL RUTH E
15178	FLEMING HUBERT M	22674	GAN HERMAN A	18928	GLADES INC THE	12985	GROSENHEIDER HERBERT
22423	FLYNN SALES CO	13215	GANSNER EST CLARENCE	22957	GLEASON STEVE	6472	GROSENHEIDER MILTON F
22287	FLYNN THOMAS E	19447	GAN-SPARKS LINDA K	17319	GODFREY CHESTER B	3058	GROSS MORRIS
19276	FOILES DELTIE K	18914	GANTER LYLE N	21078	GODOWITZ GLORIA D	13539	GROVE DONALD E
22154	FOILES JEFFERY B	21943	GARARD EVELYN M	15006	GOEBEL HAROLD F	20622	GROVE HAROLD
1920018540	FOLBRECHT ANGELA	18268	GARCIA JAY	22767	GOHEEN WESLEY B	19135	GROVE JAMES A
6342	FOLKERS GRACE	14334	GARNER EVELYN	10271	GOLBRICHT EST M L	13801	GROVE LARRY
1154	FOLKERS HENRY W	19821	GARRITSON PAUL W II	22030	GOLLEY TIMOTHY	17365	GROVER E D
21342	FONES HILDA B	21958	GARRY ED	18068	GOODE SANDRA	7889	GROVES DOROTHY
17468	FORD CLAYTON K	16578	GAUEN WALLACE R	21409	GOODHART RUSSELL W	13591	GRUENDAHL ELIZABETH P
900016934	FORD ESTATE FRIEDA F	15603	GEE J C	22172	GOODMAN SANDRA J	22385	GRUENEBERG DONALD
		8774	GEHRKE SAMUEL	23073	GOODRICH JEROME D	22232	GUARDIAN WIRE & FENCE

20755	GUESS DEBORA A	3964	HARBAUGH GEORGE P	23184	HELLER JUDITH G	2627	HOFFSTETTER DORINE
1730002728	GUILANDER RICHARD	20995	HARBAUGH NORMA L	11025	HEMANN DONALD E	22514	HOFFSTETTER ROGER
16653	GUNNING WILLIAM H	21554	HARBAUGH ROBERT D	1540005401	HEMKEN BURTON E	1420012915	HOLDER DEANNA
22706	GUNTREN DAVID L	17915	HARDER JOHN	10765	HEMKEN BURTON E	21172	HOLDER GERALDINE E
19737	GUSTAFSON ALLAN P	1330005900	HARDISON MARIAN F	2030010340	HEMKEN DARLA	1720000306	HOLDERREAD AGNES
15439	GUTHRIE DONNA M	23183	HARDY DANIEL E	2020010340	HEMKEN DONNA	12331	HOLIK JOHN JR
14954	GUTMANN JAMES	14384	HARMON JACKIE W	1350004086	HEMKEN JASON	9880	HOLLAND JOHN S
3963	GWILLIM ADAM S	1360005399	HARMS GREGORY	1370004086	HEMKEN RAY L	22544	HOLLEY FRED T
15703	GWILLIM DALE E	16099	HARMS RICHARD	23312	HEMKEN RAY L	10647	HOLLIDAY ALMA L
15945	GWILLIM JERRY L	14291	HARNETIAUX DUANE L	1390004086	HEMKEN RICK L	22133	HOLLIDAY JIMMY C JR
22067	HAAR RAYMOND G JR	22972	HARNETIAUX MICHAEL P	1940001927	HEMKEN TERRY SR	21728	HOLLINS SHERMAN A
22648	HACKER FRED A	1830015236	HAROLD DAVID	18452	HEMKEN TERRY W SR	22233	HOLLIS EDWARD J
1420014518	HACKETHAL SHERYL	20503	HARRIS JUDY L	3801	HEMKEN VIVIAN	17411	HOLLIS GEORGE W
19438	HAENITSCH RONALD W	18735	HARRIS LOUIS T	17959	HEMMERLEIN CARL	22082	HOLLO TARA M
19439	HAENNY ALICE G	10027	HARRIS MARY C	17432	HEN HOUSE INTERSTATE INC.	12461	HOLLOWAY LULA D
19201	HAGEMAN IRENE L	20210	HARRIS MICHAEL	3875	HENDREY BETTY	5085	HOLMAN KATHERINE
23244	HAGEN DAVID	17890	HARRIS ROBERT E	22830	HENDRICKS WILLIAM D	3734	HOLMES LYNN A
1691	HAGEN DOROTHY C	8355	HARRISON HERBERT H	19637	HENDY ROBERT J	22134	HOLYFIELD ROGER
20101	HAGERMAN SHARON L	17231	HART RALPH D	21505	HENRION FRANCIS J SR	22967	HON WILBURN
20969	HALCOMB MICHAEL	18504	HARTING JOHN E	7859	HENRY JAMES E	22959	HONCHAK DUANE A
10863	HALE CATHERINE	7184	HARTMANN ROBERT J	23181	HENSON JOSEPH A	21632	HOOD HERVANA E
14502	HALE WILLIAM V	19711	HARTSHORN CHARLOTTE C	21699	HERBSTREIT CARL A	1683	HOOK ESTATE CALVIN
12966	HALEMEYER BETTY J	20178	HASLAM LUANN	19103	HERDER MARY A	7248	HOOPER K E
10080	HALEY MARJORIE L	19266	HASQUIN FRANK W	67	HERMAN MARIE	7498	HOORMAN LEO
8683	HALL FLOYD S	23286	HATFIELD RICHARD L	15358	HERMENS GLEN T	1930015999	HOPKINS CHESLEY CHICK
15355	HALL GEORGE S	22392	HATLEY HERBERT E	16360	HERRMANN DAVID	21643	HOPKINS DOUGLAS B
1583	HALL O B	9816	HAUG ALFRED	23067	HERTZ CLAUDE M	21084	HOPKINS MICHAEL L
14784	HALL OLIVIA J	16516	HAUSMAN CHRISTOPHER	5655	HESSENAUER FRANK	1950015999	HOPKINS MICK
21631	HALL RONALD W	5774	HAUSMAN JOSEPHINE	21684	HESTER NORMA J	18700	HOPKINS ROY G
6294	HALLERS JAMES	21745	HAVILAND TERRY	18730	HETTICK WATERWORKS	15999	HOPKINS TERRY
13307	HALLOWAY ALICE	23437	HAVLIN RICK J	19738	HEWITT GERALD	22299	HOPLEY BERNARD
11659	HAMBLÉN KATHIE	22209	HAWKINS BARRY R	15359	HEWLETT BILLY	23158	HOPPER WILLIAM
4140	HAMBY CALVIN C	18712	HAWKINS JAMES M	1775	HEYEN ANITA	12244	HORN OMER
19019	HAMEL JERRY S	4144	HAWKINS ROSA L	1620005501	HEYEN LISA A	1520016419	HORNADAY ANNA
20523	HAMER JEFF	21435	HAWKINS STANLEY W	20389	HEYEN MARY A	13690	HORTON BILLY T
20268	HAMILTON DEBORAH L	22761	HAWLEY JOHN R	6211	HEYEN WILLIAM C	23159	HOSTO LARRY P
4964	HAMILTON EST ALICE	19685	HAYDON EMMETT C	5455	HICKS BESSIE	15417	HOUCHEM PERRY
23094	HAMM ERNEST E	19023	HAYDON NANCY E	17616	HICKS WESLEY J	21022	HOUCK ALBERT J
6560	HAMMANN DALE A	16604	HAYDON TERRY L	18766	HIGHTOWER TIMOTHY	21022	HOUCK ALBERT J
21315	HAMMANN DENNIS W	1550001277	HAYES JERRY	22598	HILDRETH JENNIFE L	15418	HOUP T CHARLES T
13166	HAMMANN ROBERT C	7665	HAYNES BAXTER	2992	HILL BURNETTA	19928	HOUSER JOE W
2747	HAMPTON THOMAS J	6296	HAYNES EMMETT J	5458	HILL EDITH	20528	HOWARD JAMES C
20283	HAMPTON WILLIAM	13167	HAYNES MARY E	13455	HILL JANICE M	9944	HOWELL JAMES R
9091	HANCOCK GUY W	22690	HAYS STUART R	13592	HILL LEO J	21790	HOWELL PHIL
22734	HANCOCK JAMES E	18755	HAYWOOD EST LIZZIE	10684	HILL MELVIN	15880	HOWELL RAY E
16157	HANCOCK PAUL JR	1940003552	HAZELWONDER KAROL	21668	HILL MELVIN E	21506	HOWELL WILLIAM L
18113	HAND ALLAN D	9101	HEAVNER DIANN G	21915	HILL ROBERT B	20878	HOWLAND EVELYN L
12531	HANDY HOWARD	19596	HEDEMANN NORMAN	1420007530	HILL SHARON	3145	HUBBARD HAROLD
11614	HANELINE ANNA	22747	HEDGE CATHERINE L	10766	HILL WELDON E	15541	HUBBARD LOWELL T
5188	HANEY FRANK	4055	HEDGE COCK J M	16197	HILL WILLIAM E	22700	HUBER JULIUS G
18540	HANEY GREGORY	20456	HEDGER WILLIAM W	22022	HILLMER KENNETH J	14387	HUDGENS ROBERT L
17586	HANKINS RICHARD	2020003574	HEEPKE JANET M	15608	HILLMER WILLIAM	8511	HUDSON C J
18587	HANKINS SHARON R	1920010027	HEFLIN BRYAN	20600	HILLSIDE BAPTIST CHURCH	7668	HUDSON CHARLES W
16658	HANKINS THOMAS C	1930010027	HEFLIN JEFF	21370	HILYARD MELANIE	12921	HUFF CLARA
19120	HANN FRANK	15454	HEFLIN LLOYD	22640	HINSON JAMES M SR	18272	HUFF CLARA M
22094	HANNEKEN RONALD	23235	HEIGERT EST GARY D	12587	HINTON WILBUR F	23338	HUFF CURTIS L
21933	HANNIG BECKY	18271	HEILMAN DOUGLAS W	22213	HIRSCHL JAMES E	14593	HUFF LEROY
7399	HANOLD BRUCE R	19008	HEIM DOLORES A	12588	HOEHN FRANK E	15271	HUFF LESLIE E
18482	HANSBERRY ROBERT L	22516	HEINDRICKS JUNE I	15671	HOEKSTRA HELEN M	21669	HUFSTEDLER FRANK J
18947	HANSEL JOE	12914	HEINEN PAUL	20168	HOERMAN GLENN L	14926	HUFSTEDLER LOUIS
23133	HANSEN SCOTT	12585	HEISMAN DEANNA	21838	HOFER KIM E	5460	HUGHES BESSIE

73	HUGHES BOYD A	3658	JACOBS JOE W	3400	JOHNSTON MARILYN	6437	KELLY ARTHUR C
1320002442	HUGHES CAROLYN	22665	JACOBS JOSEPH T	20486	JOHNSTON SIDNEY F	21964	KELLY BEVERLY J
74	HUGHES E E	9704	JACOBS MARY	12990	JOHNSTON WILBUR	19924	KELLY WILLIAM
23209	HUGHES JON W	20036	JACOBSON RONALD E	23272	JOINER MICHAEL E	10261	KEMP CAROL
10961	HUGHES LEE	1526	JACOBY CHESTER	18169	JONES AUDREY J	14392	KEMP ROBERT E
20179	HUGHES LOUIS D	14507	JAGGIE LEROY	21704	JONES CONRAD W	1314	KEMPER BAPTIST CHURCH
6299	HUGHES MARY L	8460	JAHNSEN CAROL	22610	JONES DLAINA	21520	KENSER JERRY L
11855	HUGHES RAE A	12464	JAHNSEN GUY	22929	JONES DOLLIE M	19617	KENT ESTATE BARBARA A
13692	HUGHES STANLEY L	20169	JAMES ELLIE M	18033	JONES ERNIE B	23250	KERR FRANK A
7152	HULL ESTATE HAZEL K	11760	JAMES MILDRED	6713	JONES FRANK A	14393	KERWIN RICHARD
17382	HUMKE CLINT	16666	JAMESON JACK	17087	JONES HELEN L	3860	KESSINGER JOSEPH H
21079	HUNCIKER CLAIRE J	1027	JAMESON JACK	17720	JONES JAMES C	21797	KETCHUM LORETTA L
22835	HUNT DAVID A	8785	JAMESON THERESA E	21556	JONES KATHERINE	83	KEUNE ALICE H
20082	HUNT DOUGLAS E	18977	JANIS MARY C	21827	JONES LAWANDA	19982	KEYES RALPH E
17503	HUNT LARRY R	23160	JARMAN ARTHUR D	21449	JONES RICHARD E JR	1422	KILIAN MARVEL
23236	HUNT MARY M	19069	JATCKO MIKE P	17964	JONES ROGER K	8608	KILIAN NORMAN C
10649	HUNT WILLIAM F	21448	JEFFERS CLAUDE V	21733	JONES ROSA D	1620003996	KILLAM LORAINÉ
15227	HUNTER ELIZABETH A	22738	JEFFERS JEFFERY A JR	23391	JONES STEVEN R	20186	KILLEBREW PHIL R
6677	HUNTER ROBERT T	9318	JEFFERSON COLUMBUS	20548	JONES THOMAS G	21986	KILLIAN CARLA S
9357	HUNTER WESLEY M	16522	JENKINS JON C	6882	JONES VIRGINIA	8629	KIMBRO CHERRILL
20358	HUNTSMAN RICHARD J	10902	JENNINGS GLEN D	15276	JONES WAYNE M	19729	KIMBRO HARVEY D
13508	HUPPERTS JUDITH C	16943	JERDE GLADYS H	22802	JONES WILLIAM W	10308	KIMBRO JACOB A
17257	HUSON PATRICIA M	15673	JERSEY SANITATION CORP	1640016363	JORDAN STANLEY	5180	KINDER SHARON
413	HUSON W R	20696	JETT CARL G	4162	JOSTES EDNA	21482	KING DONALD L
17108	HUTCHINS HAROLD	15882	JETT DONALD C	21945	JOUETT JOHN L	16202	KING HAROLD W
21578	HUTCHINS MIKE	18815	JETT THOMAS M JR	79	JOYCE ESTATE GERALD	18030	KING KOLLIS E
18598	HUTCHINS RONALD G	21996	JETT VIRGINIA	18017	JOYCE HAROLD	1730008826	KING LAVONNE
22014	HUTCHINSON KEITH A	22257	JOBE CLIFFORD	20797	JUMP JAMES R JR	18544	KING MIKE
5656	HUTTE EARL A	23424	JOHNISEE RICHARD D	23260	KADELL GARY	5464	KING MILDRED L
22309	HUYSER GORDON E	20843	JOHN'S AUTO SALVAGE	7947	KAEMMERER FRED	16074	KINNAMAN GERI A
20865	HYBBERT LARRY P	21308	JOHNSEN STERLING L	6477	KAHL HENRY J	22087	KINSELLA NANCY L
9708	HYMAN CLIFFORD	16524	JOHNSON ALFRED F	21450	KALINA RICHARD R	10798	KINSER R L
20560	ICE JOHN B	22916	JOHNSON C J	22224	KALLAL M. ELLEN	16298	KINWORTHY LINDA
17772	ILER MORRIS	20194	JOHNSON CARL H	2050	KALLAL MARY	17322	KIRBY CHARLES R
21061	ILL DIST PENTECOSTAL	17838	JOHNSON CHARLES A	2297	KAMPER LEOLA F	11311	KIRBY VAWL W
16893	ILLINOIS CENTRAL GULF RR	21518	JOHNSON DAVID	6207	KANALLAKAN GRACE E	19044	KIRCHNER ELDON D
15488	INDIAN LAKES ESTATE	16965	JOHNSON DAVID B	22032	KARRICK DALLAS L	9028	KIRCHNER WILLIAM R
22121	INGRAM DALLAS L	1852	JOHNSON EST. NETTIE M	9947	KARRICK GLENN E	17946	KIRKWOOD JOE T
15126	INGRAM DAVID R	15015	JOHNSON GLENN E	12661	KARRICK LORI A	20895	KITCHELL DONALD L
22373	INMAN ROBERT V	1340002929	JOHNSON GRACEANNA	17082	KARRICK RAY	18218	KITTEL JOHN T
12463	INTERSTATE PRODUCERS	21592	JOHNSON JAY E	15423	KASCH HOWARD E JR	21255	KLAAS JOHN
12533	IRVIN WANDA M	14389	JOHNSON JOE A	19037	KASER BILLIE F	20617	KLAAS NORMAN A
15364	IRWIN MARLIN R	12770	JOHNSON LUCILLE I	10130	KASSING VIRGINIA L	22106	KLEIN OLIVER D
8012	ISENBERG BARBARA G	428	JOHNSON LUELLA	4250	KASTEN DEAN I	4535	KLEIN WALTER C JR
16521	ISRINGHAUSEN DAVID M	5300	JOHNSON LUELLA A	16003	KASTNER CHARLES J JR	18160	KLIM WILLIAM C
8152	ISRINGHAUSEN JAMES F	1420001373	JOHNSON MARIANN	11552	KATCHMAR NELLIE L	4166	KLIMUT ANNA
23085	ISRINGHAUSEN ROBERT D	11494	JOHNSON MARIANN	15278	KAY INA L	19624	KLOCKE KENNETH L
22155	IVEY DONALD	7058	JOHNSON MARLENE M	22948	KAYE PAMELA	21433	KLOPFER BRAD A
21144	JACK DANIEL B	20887	JOHNSON MELVIN F	18897	KEARBAY CLIFFORD E	13261	KLUS FRANK J
12388	JACK-RICH INC	19193	JOHNSON PATRICI A	22528	KEE CONRAD S	5256	KNAUEL LAVERNE M
20752	JACKSON DONALD C	21381	JOHNSON R W	21997	KEENEY JEFFREY A	18059	KNESTAUT DANNY
4159	JACKSON EST. CLEONE	19591	JOHNSON RHONDA L	16609	KEETON DAVID M	11716	KNIGHT JEWELDEAN
5708	JACKSON FRANCIS L	16052	JOHNSON ROBERT P	16321	KEEVEN IGNATIUS J	22789	KNIGHT KENNETH
14879	JACKSON HENRY E	10867	JOHNSON STANLEY J	15956	KEEVIN GAYLE	1340000452	KNOCHE DONNA
14339	JACKSON JAMES	13653	JOHNSON TERRY	9821	KEISER ESTATE ALVA H	20430	KNOCHE MICHAEL A
22922	JACKSON LUCY	6214	JOHNSON WILLIAM A	10131	KEISTER ERVIN C	23195	KNOWLES JOHN A SR
1440005759	JACKSON MARIE	9710	JOHNSON WILLIE	22546	KELLERMAN JEROME E	22306	KOBERCZKY ANTON C
22818	JACKSON RONALD L	22917	JOHNSON WILLIS O	6596	KELLEY ALLEN R	21551	KOEHLER HAROLD V
9557	JACKSON ROY	20732	JOHNSTON DONALD N	1430000336	KELLEY BETTY	22335	KOEHLER RONALD E
1530008305	JACOBS DIANE	3737	JOHNSTON FRANCES M	23059	KELLEY JAMES A	21865	KOEHNE DAVID M
8305	JACOBS JOE JR	19741	JOHNSTON KEVIN H	12466	KELLEY RICHARD T	21985	KOENIGSFELD KARL

19372	KOENIGSFELD KENNETH A	17762	LAKE CHARLES A	20639	LEWIS JERRY L	19003	MALLEY VONITA S
12878	KOENIGSFELD KENNETH T	5257	LAMBERT EARL A	14555	LIEBIG ALAN C	22442	MALONE ALLEN L
15615	KOGEL HOWARD W	16368	LAMBERT MILLIE C	21714	LIEVERS PAUL	22431	MALTIMORE HOWARD
13726	KOHLER DOLORES K	20908	LAMERE ALBERT W	21823	LIGHT RICHARD G	20300	MALTIMORE LARRY G
20070	KOHLHASS RAYMOND E	13223	LAMONT EDWARD E	21147	LILEY GARY A	1620015189	MALY MATTHEW
10869	KOHLMILLER FRED J	18675	LANCASTER EARL R	19409	LILLEY RICK	9885	MANDEL MARGUERITE
1560005515	KOKE EVELYN	22191	LAND JEFFREY	2020017247	LINDSAY UVA	23068	MANLEY STEVEN K
15280	KOMBRINK CLARENCE W	15833	LONDON EST KATHARYNE S	15425	LINDSEY BETTY J	1460010022	MANN CARLA L
19853	KOMMICK TRUST WILLIAM A	8207	LONDON KATHLEEN	22260	LINK RONALD E	15893	MANNING JAMES E
12060	KONIECZNY EDWARD	7592	LONDON NORMAN A	8123	LINSLEY MARGARET L	20270	MANNING MICHAEL P
17733	KONNEKER GERALD P	5859	LANDRETH IVY W	18537	LINVILLE ESTATE CHARLES	17088	MANNING WILLIAM L
12829	KORBUT KENT J	14030	LANE CLYDE L	23500	LIPPOLD CONST INC	4902	MANSFIELD MERRILL F
15281	KORNEGAY JOEL	10440	LANE GERALD	22678	LISH ANGELA	2405	MANSHOLT DOROTHY
17716	KOSKI JULIAN L JR	5860	LANE JOHN D	21840	LITTLE EDITH A	19895	MARAK ROMAN W SR
23383	KOVAR HERMAN W SR	22310	LANE RICK L	15128	LITTLETON ETHEL	21674	MARBURGER MICHAEL
16366	KRAEGENBRINK EMIL P	18523	LANGHARDT JOSEPH V	21496	LIVINGSTON JAMES F	22888	MARKEZICH JOHN N
22318	KRALIK STEVEN F	4662	LANGLEY HELEN R	12788	LOCKARD DALE	1920005769	MARLOW ELAINE
21735	KRAMER HEIRS	23210	LANSDON LARRY J	9776	LOCKHART JEWELL	17046	MARMINO JOHN
18702	KRAMER HENRY G	22472	LANSDON SHERRY L	23097	LOCUST GROVE STOCK FARM	21427	MARMINO SAM J
6354	KRAMER SR JOSEPH R	12596	LAPLANT MARJORIE H	12832	LOEW JOHN W	21869	MARMINO TOD
2892	KRAUSE BARBARA A	11718	LARNER HAROLD JR	6172	LOGAN HARRY I	22226	MARQUESS NATHAN E
13868	KRAUSE FRANCES	13196	LASKACH MONA	10138	LOGUE WILLIAM N	21428	MARSH LAWRENCE E
21866	KRAUSHAAR JASON	17247	LAURENT CASSAUNDRA	10769	LONG DORIS K	22289	MARSHALL DENZIL L
3741	KRAUSS ROY P	7014	LAWLER EVELYN M	6394	LONG IRMA K	12958	MARSHALL HARRY F
20571	KREOGER DANIEL	6752	LAWRENCE MARY F	20650	LONG LAKE RESORT INC	3114	MARSHALL LOUIS E
2220	KRESS OLGA	20470	LAWS WENDELL G	21073	LONG LYLE	9852	MARSHALL MARIE
19826	KRISHNAM GEE R	21040	LAWSON CHARLES	17947	LONGMEYER JOHN M	22043	MARSHALL ROBERT O
22312	KROPP MARVIN H	20546	LAWSON JOHN W	18546	LONGWELL ERNEST	21032	MARSHALL VON D
21411	KROTZ KENNETH	22374	LAWSON MICHAEL R	16674	LOVALL CHARLES D	10545	MARSHALL WILBERT K
10167	KROTZ RICHARD	22397	LAWSON THOMAS G	22208	LOVELACE SIDNEY S	8940	MARTIN ERA
3402	KRUEGER NOVA M	11497	LAWTON LEO	22253	LOVELESS DAVID	8905	MARTIN ESTATE ELOUISE
16054	KRUG DOUGLAS N	5220	LEACH EDWIN C	17112	LOVELESS JOYCE	11365	MARTIN ESTATE HELEN R
22436	KRUGER WILLIAM E	13546	LEACH JAMES R	22999	LOVELESS PHILLIP	21560	MARTIN G C
1360002929	KUDERKA JOHN	2706	LEACH MICHELE	1430011794	LOVELL JOAN	10771	MARTIN JAMES A
23174	KUEBRICH CHRIS J	6564	LEATHERBY THORTON	1430009408	LOVELL JOAN	6440	MARTIN KENNETH R
916	KUEBRICH PAUL J	11932	LEBEGUE JANET K	18950	LOWE MILTON R	23331	MARTIN KENNETH W
22548	KUEHNEL TERRY	5040	LEBRO EVELYN	7255	LOY HARRY L	9391	MARTIN KENNETH W
7642	KUEHNEL WILLIAM E	9561	LEE EARL	1430003361	LOYALL BARBARA	21776	MARTIN SUZANNE K
22529	KUES PAUL L	22156	LEE EVELYN	5940	LUCKER LLOYD C	18454	MARTINEAU JOHN L
1720008974	KUETHE BRIAN	18242	LEE LARRY J	15426	LUCKETT LAWRENC	19359	MASINELLI AMELIO
8974	KUETHE KEVIN R	21421	LEFLER ROBERT L	22500	LUEBKE SHIRLEY A	19597	MASINELLI LEO
1520000804	KUETHE WAYNE	7742	LEFLER THOMAS D	1450003961	LUEKER BETTY	15371	MASINELLI RONNIE L
5614	KUFA JOSEPH	20631	LEGGETT DANNY	13875	LUTTRELL JEANETTE	1330009475	MASK LEE
458	KULASH MARTIN	23075	LEHMANN JACK C	19894	LYNCH ALLEN D	1320010987	MASSA OLGA
12735	KULENKAMP ARTHUR O	15127	LEIHY FRED C	23051	LYNCH PATRICK C	23395	MASSEY LEWIS
7334	KULENKAMP HOMER N	20439	LEMANSKI ADELINE H	21024	LYONS RUSSELL J	13466	MASSEY MICHAEL D
20657	KULLORN ANTHONY C	23162	LEMARR MAURICE L	22393	LYTLE DAVID E	17895	MASULIS JOSEPHINE
4596	KUNTZMAN NORMAN G	1320005399	LEMBKE KELLY	8583	MAASS GENEVA C	12960	MATHENIA CHARLES E
1740	KUNZ DELMAR	1905	LENTZ MARY E	20083	MAASS JEFFREY A	18018	MATHENIA JESSE
20553	KUTTER FRED	10092	LEONARD OLEN	16532	MAASS RANDY R	18871	MATHEWS GLORIA
20708	KYLE BOBBY J	21041	LEONARD ROSS V	16677	MABB DEAN M	6305	MATLI BERNARD A
21271	LACY ROGER E	5617	LEONBERGER MAXIE	14190	MACKAY JAMES R	4904	MATLOCK CALVIN
4167	LADENDORFF VIRGINIA M	1670017434	LESSMAN CASEY L	19112	MADISON ROBERT E SR	21675	MATTHEWS JEWEL R
11496	LAGEMANN OLIN R	1660017434	LESSMAN DALE H	21356	MAGRUDER BILLYE B JR	17197	MAURER FERN
4538	LAHR FAMILY FARMS LLC	1630017434	LESSMAN JAMES E	19775	MAGUIRE ANN M	20849	MAXWELL BRUCE E
13908	LAHR GEORGE F	21286	LESTER PHILLIP M	9619	MAGUIRE BETTY L	4626	MAYERHOFER JOSEPH F
21545	LAHR TODD R	3589	LEVORA EST. AVESTA	15427	MAHAN ROBERT A	17793	MAYNARD SHIRLEY
8739	LAIR ESTATE WINDLE	10230	LEWEY KENNETH L	11770	MAHOLLAND BLANCHE	12774	MCADAMS ROBERTA J
22755	LAIRD GARY W	2673	LEWEY KENNETH W	21764	MAHOLLAND LYNN F	19949	MCAFFEE JOHN L
20601	LAIRD RAYMOND W	20998	LEWIS DAVID A	12883	MAINS JAMES F	1360000499	MCAFFEE STEVEN
17984	LAIRD RICKIE	22015	LEWIS EDWARD L	4840	MALIN JOSEPH W	17121	MCANINCH MARCIA

19138	MCANINCH ROSS	16737	MERRIMAN KENNETH	6850	MOORE ANNA MAE	9456	MUSGROVE BERT
23134	MCBROOM HAROLD R	22204	MERRIMAN STEPHEN D	19625	MOORE BARBARA A	4189	MUTZBAUER MILDRED F
23003	MCCAIN CLARENCE	22193	MERRITT JOYCE C	1602	MOORE ESTATE ROSE A	22694	MYERS DONALD
13424	MCCANN WILLIAM I	3359	MESSNER REGINA	13201	MOORE HERBERT H JR	7120	MYERS FRANCIS G
18788	MCCARTHY ORA SR	1630007119	MEYER BILL	22427	MOORE JAMES O	21220	MYERS GREGORY L
22105	MCCHRISTIAN FARM 7399	16010	MEYER BRENDA	19798	MOORE JAMES S	1472	MYERS GUY R
15234	MCCLAIN JUANITA M	12225	MEYER ESTATE WILLIAM E	4017	MOORE JOHN W	13001	MYERS RONALD E
3492	MCCLARY EDGAR W	17077	MEYER LARRY E	22394	MOORE KIM	1431	MYERS RUSSELL
21351	MCCLLELLAN THOMAS T	6757	MEYER PAUL E	16967	MOORE LYLE F	22978	NAIL FRED W
18306	MCCLINTOCK DONALD E	22662	MEYERS JAMES R	21195	MOORE PATRICK F	13267	NANCE DONALD L
12062	MCCOLLAUGH CHARLES	14460	MEYERS LARRY W	1420008289	MORAN CAROLYN	10140	NANCE EZEL JR
18901	MCCOLLUM DENZIL R	1730014460	MEYERS RANDY	17185	MORELAND CARROLL D	11276	NANCE JERRY
21909	MCCONNELL MICHAEL	17041	MICHENER E R JR	19155	MORELAND RICKY A	18468	NASH LYNN A
22457	MCCORD ROBERT L	14157	MICROWAVE COMM INC	12252	MORELL MAUDE V	23363	NASH MAURICE L
22565	MCCORMICK BETTY	SITE #41141		18475	MORELOCK ESTATE GEORGE K	21851	NASH STACEY J
21257	MCCOY RANDY H	19890	MIELKE MICHAEL E	15286	MORELOCK ESTATE GEORGE L	20133	NAVE GARY E
14156	MCCRACKEN ELIZABETH A	21587	MIEURE BEVERLY R	18917	MOREY JOAN E	20198	NEAL DENNIS
16276	MCCRAY MARJORIE K	22739	MILES ESTATE EDWARD E	3014	MORGAN ALEXANDER	23364	NEAL MARY L
20852	MCCUNE JOHN J	12741	MILES ESTATE GERALD E	16798	MORGAN CHARLES H	19891	NEAL WARREN H
22960	MCDONALD MARSHAL E	16797	MILES HARRY J JR	12425	MORGAN FREDERICK E	18891	NELSON DAVID A
15890	MCDONALD ROBERT J	22964	MILES KATHY L	12547	MORGAN GLENN E	16800	NELSON LOIS M
21124	MCDONALD RODNEY	23470	MILITELLO LEO JR	1420005621	MORGAN JILL A	23385	NELSON RICHARD A
21841	MCDONOUGH RANDY	20736	MILL CAFE	1440003961	MORGAN STANLEY	7771	NELSON ROBERT L
18012	MCDONOUGH ROSEMARY	17859	MILLARD CARL E	22458	MORGASON LARRY D	21916	NETTLES RONALD L
14510	MCDOWELL LUCILLE	10873	MILLER BETTY L	1450011794	MORONEY DEANA	22518	NEWBERRY DANIEL W
11622	MCFADDEN HERMAN	21965	MILLER CARL D	1450009408	MORONEY DEANA	21484	NEWBERRY JEFFREY B
15054	MCFARLIN CHARLES T	4985	MILLER DENNIS L	8131	MORRIS DALE E	19945	NEWBERRY KEVIN E
1420010019	MCGIFFEN JEAN	19950	MILLER DOROTHY M	13571	MORRIS JOHN	19832	NEWINGHAM HAROLD L
20249	MCKAIG JAMES R	3502	MILLER EST PAULINE	15679	MORRISON DONALD	21897	NEWMAN LAWRENCE W
15900	MCKAY DENNIS	19742	MILLER GEORGE R	10907	MORRISON DOROTHY B	20143	NICKASON FRANCES
23163	MCKENZIE JEFF	9748	MILLER GLEN	20347	MORRISON LAWRENCE W	4408	NICKEL RUBY F
22589	MCKENZIE JOHN W	1460004985	MILLER HERBERT	22177	MOSBY BOBBIE G	3889	NIEMACZEK BRENDA K
21848	MCLARTY PEGGY	21066	MILLER JEFFREY W	4116	MOSCARDELLI CYNTHIA	7121	NIEMANN HERBERT L
13923	MCLAUGHLIN EDNA J	15285	MILLER LINDA	22591	MOSLEY RETHIA	5115	NIEMANN TRUST LEONA
17553	MCLAUGHLIN ROBERT J	16146	MILLER MARY	20709	MOSLEY RICHARD H SR	18590	NIMMONS GERALD H
22920	MCMAHON GARY D	17686	MILLER PEGGY L	16680	MOSS VIRGIL	1715	NIXON KENYON
11768	MCMILLEN VERNON H	13704	MILLER SEMICO D	1350010987	MOTIKA PAUL JR	19487	NOBBE PAUL S
18804	MCNATT JACQUELIN	19703	MILLER SHARON A	16911	MOTON JOHN T JR	9241	NOBLE KENNY
4180	MCPHERSON EST SARAH M	19341	MILLER VERLA M	21107	MOULTON RICHARD M JR	7462	NOBLE ORA
19762	MCPIKE JIM	6685	MILLER WALTER E	13777	MOUSER MARVIN R	1562	NOBLE RUSSELL
4182	MCREVEY WILFRED E	1320005861	MILLER WILLIAM	19743	MOZIER ALAN D	20180	NOETH THOMAS
1940008705	MCWILLIAMS NENA	18076	MILLER YVONNE	14418	MT OLIVE POSTMASTER	8701	NOLAN TRUST EDGAR W
21565	MEARS JOHN B JR	1720002817	MILLS ELIZABETH A	21301	MUDD JOHN W	22537	NORRIS JOHN M
22679	MEDFORD HAROLD S	22320	MILLS JACK	20966	MUELLER FREDERICK H	22538	NORTH LESLEY L
22724	MEDLEY JERRY	1750002817	MILLS JOSEPH K	8273	MULLEN H W	18957	NOVELL EUGENE E
509	MEEHAN FRANCIS F	19876	MILLS LAWRENCE A	1330006800	MULLEN RUTH	13599	NOVOTNY GEORGE
22006	MEEHAN GEARY D	1320000510	MILLS WILLIAM	2307	MULLENS LEROY	22336	NOVOTNY MARK W
21803	MEEKS HAROLD D JR	15896	MILTON WALTER C	20836	MULLINS JOSEPH	12603	NOVOTNY WILLIAM E
22033	MEISNER CARL	511	MINDRUP EST ERNA	22254	MULPAS CHARLES E	9397	NOWLAN CHARLES A
21824	MEISNER ROBERT E	23460	MIRKOVIC JANKO	18823	MUNOZ ALFONZO	10238	NULL ALBERT O
16438	MELLISH EST JOSEPH	16613	MITCHELL CLARENCE L	23027	MUNTMAN CURTIS L	3980	NUMRICK EMMA B
16131	MELTON CHARLES L	19792	MITCHELL DAVID W	1858	MURDOCK EST HENRY C	16542	O'CONNOR ROBERT J
12667	MELTON MAXINE	3284	MITCHELL GLENN	5719	MURPHY BERNICE	11903	ODEN RONALD B
23069	MELVIN HARRY	21677	MITCHELL J M	21623	MURPHY FRANK A	15288	O'DONNELL RICHARD
1520003597	MENG JESSE	9659	MLEKUSH MAMIE	21831	MURPHY MICHAEL G	10337	ODUM WILLIE
15650	MENGEKAMP ROBERT	13323	MOHR BETTY L	20980	MURPHY STEVE	22321	OITKER ELIOT E
18757	MERCER RAY	12703	MOHRMANN ROBERT	23087	MURRELL JAMES J	20626	OKE CONNIE R
1348	MERIDETH ORA L	5214	MOLINAR LORRAINE	3621	MUSCARELLA ALICE	14862	OLLER DAVID H
1820002901	MERKEL LOREN	18819	MONDHINK HARRY R	18971	MUSCH DOROTHY	2233	OLLER FRANCES
10096	MERKLE JUDITH A	17114	MONTGOMERY RONALD L	12704	MUSGRAVE MAURICE F	13152	OLLER JOHN F
21160	MERKLE ROBERT CJR	6306	MOODY DWIGHT L	19349	MUSGRAVE PATTY G	21522	OLSEN THOMAS A

21678	OLTMANN & COMPANY	2439	PERRINE REV TRUST	23147	PREGLER MELBA J	1320012026	REESE GHIL
21141	OLYSAV DAVID J		RALPH & MYRTLE	22203	PREGLER PRESTON	12026	REESE JAY
19971	O'NEAL SHARON R	16174	PETERS EST BEN D	16016	PRENZEL EDWARD E	1530002225	REEVES MARJ
21004	OOTON KIRBY A	17456	PETERS LILLIE K	5560	PREVEDELL ROBERT M	4716	REGLI PHILIP
20485	OPEL ESTATE KENNETH W	21085	PETERS PAMELA	15713	PRICE CECIL W	4303	REIHER HAROLD H
1420003120	ORBAN DALE L	21113	PETERSON CLARENCE M	22112	PRICE HOWARD	20573	REIMER ROBERT R
1750015510	OROS MARY	1920014627	PETRI KARLA	13519	PRIDDLE THOMAS W	18687	REINBOLD GEORGE
15653	OROS PETE	15750	PETRONE A N	14410	PRIMAS WILMER H	22685	REINHARDT CAROL E
23243	ORTO ALLAN R	11969	PEYTON EVERETT F	18944	PRINCE ENTERPRISES INC	6400	REINIESCH DAVID L
22096	OSBORN DEBBIE	16846	PEYTON ROBERT L	14643	PRITCHARD PAUL	1350002442	REKART DIANA F
22804	OSBORNE MARK E	12070	PFEFFER NAEOMA	19888	PRITCHARD ZANE	2822	RELEFORD HOWARD
5995	OSBURN WILLIAM E	14079	PHELPS MELVIN	17311	PROBST CARL E	1330007753	RELEFORD TRACY L
12779	OVERBEY CHRISTINE G	18840	PHILLIPS FURNLEY J	16175	PROCTOR JOSEPH W	20519	RENFROW CARL E
21412	OWENS JOSEPH	9098	PHILLIPS JEAN	18470	PROGRASS SUE A	5900	RENKEN GERALD W
21458	OWENS JUNE	1434	PHILLIPS PIPELINE CO	7747	PROUGH GERTRUDE	20822	RETFERFORD RUTH E
16447	OWENS LEROY C	18684	PHILLIPS RUBY J	21336	PROUGH MICHAEL A	13475	RETTINGHAUS EST. BERNARD J
19569	OWENS RONALD D	19342	PHIPPS RONALD E	2908	PRUITT L R	1940009726	REYNOLDS BECKI
22491	OYER JOHN W	20038	PIAZZA DONALD D	20388	PRUITT MICHAEL P	11239	REYNOLDS CHARLES R
7993	P & D LUMBER COMPANY	18005	PICKERILL DAVID R	22205	PRUITT SAMUEL L	13731	REYNOLDS JOSEPH W
17131	P P LIMITED	8836	PIEPER LEILA M	21679	PRUITT STEVE	11325	REYNOLDS NADINE
22696	PADDOCK REX L	3418	PINKERTON KAREN	21319	PTACEK ROBERT J	5486	REZNICEK BARBARA
10447	PADEN CARL	17419	PISTORIUS MARK	21883	PUCKETT ROBERT H JR	578	RHINE FARM GLENN C
13469	PAGE DONALD L JR	11860	PITCHFORD DAVID G	16848	PULIZOS JOHN	12478	RHOADS EST. WILMA M
21895	PAGE JOSEPH E	1620000237	PITMAN LAURENCE	16742	PURCELL DONALD J	6112	RHOADS JOANNE
1930004405	PAGE PAT	11970	PITMAN LAURENCE	11465	PURCELL JAMES E	21033	RHODES DAVE
21439	PAINTER JOHN H	23430	PITTS DENISE M	22890	PURSLEY TIMOTHY J	21088	RHODES DENNI
18026	PALLER FRANK	3311	PLAINVIEW LODGE #461	21566	PUSKAR BONNIE	20760	RHODES NANCY
18336	PARKER EUGENE L	6249	PLATTE PIPELINE	17773	PYLE EVELYN	22340	RHODES RANDY
22750	PARKER LARRY D	11426	PLEASANT JAMES N SR	16450	PYLES RAYMOND	23030	RHODES ROBERT L
14787	PARMLEY SHIRLEY F	7306	PLUHM EARL W	1883	QUARTON WENDELL	2352	RIBBLE GEORGE V
22711	PARR CHARLES	10952	PLUMMER CARL JR	23165	RAAB TERESA C	20173	RICE CARLENE M
22687	PARSONS JEFF	22703	PLUMMER JOHN W	21588	RADFORD BETTE	16551	RICE WILBUR F
21470	PATRICK CALVIN W	20542	PLUMMER MELVIN L	6761	RADISIC GEORGE T	18295	RICE-HOOKER MARLEN A
18602	PATRU JACQUELYN M	6359	POCKLINGTON EVAN	12611	RAGLAND KRISTIN	7099	RICH JOHN H
20829	PAT'S HORSESHOE RESTAURANT	18393	POCKLINGTON IRVIN L	17116	RAGSDALE JIMMIE R	20435	RICHARDS DANNY E
17310	PATTERSON MARGARET	21693	POHLMAN JOHN C	1530005515	RAINS WANDA	19812	RICHARDS MAGGIE
12253	PATTERSON WILLIE L	19901	POINTER MYRTLE	14162	RALSTON RUSSELL R	14618	RICHARDSON JAMES C
16015	PATTON PAUL C	16804	POINTER RAYMOND E	3508	RALSTON SAMUEL	4305	RICHARDSON LOUIS T
22630	PAUGE LOUIS JR	1786	POINTER REBA	823	RALSTON SARAH R	20510	RICHARDSON PATRICIA
22990	PAYNE JERRY R	17100	POLLARD EVERETT D	22124	RAMIREZ PETER W	10105	RICHESON C E
12949	PEAR SAMUEL F	13326	POLLARD FLOYD T	8276	RANDOLPH ALICE K	2062	RICHEY EST. ALICE V
1520001277	PEARSON JOANN	14351	POLLARD HAL	19090	RANDOLPH CANDACE J	1940004919	RICHIE JEFF
1520007936	PEDDICORD JUDITH	20875	POLLARD LEE J	1340005483	RANDOLPH PAUL	15843	RICHMOND JOHN
2020014597	PEEL AMY	20781	POLLEY FRANCES J	20683	RANDOLPH PAUL E	22167	RICHVALSKY RENEE
14642	PEGG CHARLES	9785	POLSTON EARL	1330005483	RANDOLPH STEVEN	14099	RIDENBARK ROBERT
3869	PELLIKAN GRACE	18963	PONIEWAZ THADDEAS S	22409	RANGE VERN C	17863	RIDENHOWER WAYNE
21805	PEMBROOK JOHN D	13879	POOLE MARIE J	18556	RASURE CLARENCE	22369	RIDENOUR DONNA
1640013865	PEMBROOK JOSHUA	22549	POORE ROBERT D	10143	RATZ W R	15844	RIECHMANN J A
20333	PEOPLES STATE BANK	4267	POPE ESTATE GRACE H	3605	RAY EARNEST	10732	RIFFEY LOWELL R
17482	PERDUN BETTY J	22362	PORK PLACE	17101	RAY ELMER W	15382	RIGDON CHARSHL
5999	PERDUN JOANN	1340002006	PORTER MARTY	826	RAY GEORGE T	21052	RIGDON CLARENCE A
22719	PEREZ JAMES A	13550	POTOCKI MATTHEW	8944	RAY JAMES L JR	19252	RIGGS JAMES V SR
1820014955	PEREZ RHONDA	15104	POWELL ROBERT L	19753	RAY STEVE D	5129	RIGSBY LINDA
23211	PERKINS LARRY W	20682	POWERS CARL E	17210	RAYBURN RAYMOND C	18164	RITSCHL ERNEST J
22612	PERKINS MARY	22519	POWERS DAVID A	663	RAYMOND BARBARA	1430001373	RIVA VERLAINE
10611	PERKINS OLIVIA M	3821	POWERS FARM PARTNERSHIP	19809	RAYMOND R D	13153	RIVES FOSTER
20842	PERKINSON CHARLES R	1063	POWIS JOAN	14671	RAYMOND WALTER	10992	ROACH EDWARD A
21950	PERKINSON DENNY JR	21687	POYNTER DONALD	13068	READ KENNETH W	9910	ROACH MARY J
23164	PERRIN VICTOR H	15378	PRATHER RONALD R	19863	REDMAN DENNIS	5052	ROACH SHARON
23222	PERRINE DAN R	9573	PRATT EST BERNADINE	19570	REED CHARLES E	10145	ROACH SHARON K
12840	PERRINE ELLEN	23078	PRATT NORA L	9999	REEDER BONNIE	22045	ROACH THOMAS M

20530	ROADY HOWARD L	594	RUYLE EARL	7311	SCHNAARE OTTO M	1320006400	SEKETA JANET K
13946	ROBEEN RALPH C	20565	RUYLE ELBERT H	4319	SCHNARRE ANNA E	17496	SELLERS CATHERINE
18500	ROBERTS DAVEY S	5430	RUYLE EST BYRON C	17140	SCHNEIDER FRANK	18167	SELVOG NORMAN
20353	ROBERTS DENNIS	3827	RUYLE ESTATE WALTER	13885	SCHNEIDER JOSEPH	14816	SERES FRANK
17766	ROBERTSON JANET L	17539	RUYLE PHIL L	6855	SCHOEN EVERETT L	22126	SETTLES BARRY D
3608	ROBINSON GILSON	5312	RYAN THELMA	5862	SCHOEN VICTOR	13929	SEVIER KENNETH
3065	ROBINSON JAMES F	22272	RYAN THOMAS W	1620018012	SCHOENEWEIS CAROL	23212	SEWELL JAMES E
21002	ROBINSON JEWELL	23308	S F M INC	8519	SCHREIBER FRANCES	22805	SEXTON BEVERLY J
22819	ROBINSON MYRON W	10954	S.A.S.A. CLUB	11675	SCHREIBER ROSEMARY	21198	SHANKS KIMBERLY
13402	ROBINSON ROBERT F JR	20239	S.C.A. CHEMICAL SER INC	17218	SCHREIECK JOHN D	22831	SHANKS TIMOTHY J
1330013402	ROBINSON STEPHEN P	22905	SAATHOFF THOMAS	11729	SCHREIER ALBERT	11468	SHARP JOHN R
1320013402	ROBINSON WILLIAM A	16982	SAATHOFF THOMAS	1206	SCHROEDEL WALTER	10855	SHAW ALBERT
22245	RODGERS BOB	1323016982	SAATHOFF ARLEN ERIKA	22411	SCHROEDEL ROBERT	23191	SHAW DENNIS D
21779	RODGERS STEPHEN K	1320016982	SAATHOFF CANDACE	20649	SCHROEDER CARL A	13764	SHAW ETHEL M
13012	RODGERS WILLARD E	1326016982	SAATHOFF DANIELLE	18583	SCHROEDER ERWIN J	21245	SHAW EUNICE
17341	RODNEY JAMES V	1324016982	SAATHOFF LLOYD	23106	SCHROEDER KIM M	23138	SHAW MARK A
22580	ROE LEONA	19555	SACKMAN MYRTLE	6364	SCHROEDER PAUL	18395	SHAW MILTON L
19906	ROE RUBY	22550	SADLER SYLVIA J	16180	SCHROLL ROBERT C	21715	SHAW ROSCOE H
1740004094	ROEMER ALFRED	16748	SAGEZ WILLIAM C	2317	SCHUETTE DOROTHY	22772	SHAW SALLY L
1485	ROEMER SUE	8587	SAILSBUY VERNA J	11973	SCHUETZ FRED C	22898	SHEELEY VERNON S
4485	ROGERS GEORGE W	23189	SALSKE JAMES M	10734	SCHUETZ OTHA E	15504	SHELTON EDDIE
16940	ROHLFING BARBARA	5225	SANDERS NORTON H	7269	SCHULTE EDITH	16261	SHELTON PERRY L
22466	ROLANDO JOHN	19152	SANDERS CHESTER M	22924	SCHULTE THOMAS M	19288	SHERWOOD ORVAL L
18035	ROLANDO MIKE	17239	SANDERS DOROTHY D	3105	SCHULTZ C A	18286	SHEWMAKE PAUL E
23203	ROMANO JOHN M	9042	SANDERS HAROLD L	19172	SCHULTZ C A	23032	SHIELDS GERALD D
19071	RONCO FRANK JR	21873	SANDERS PAMELA J	18359	SCHULTZ ELMER	18360	SHOOK ALFRED P
9460	RONK H A	21810	SANKS JOHN R	13708	SCHULZE DONALD	9753	SHORT CHARLES K
19912	ROOT LLOYD E	43	SANKS JULIA	19236	SCHUMER JEANETTE S	21154	SHORT RICHARD T
22891	ROPER CHARLES M	1660003211	SARGINSON STEVEN	8656	SCHWAB PAUL F	22354	SHORT RUSSELL
19465	ROPER GARY W	20773	SARVER MICHAEL L	7937	SCHWARTZ AUNE	14234	SHOWERS HAROLD A
21183	ROSCETTI JOHN R	4351	SATTERLEE CASSIE	1430017122	SCHWEGEL JAY	18918	SHULTZ EUGENE B JR
1730000306	ROSCETTI LORA	14847	SATTERLEE ELBERT	7343	SCHWENNER LORRAINE	22159	SHULTZ PENNY
4516	ROSE PAUL G	16379	SAUERWEIN BETTY J	20260	SCOGGINS ROBERT D	11784	SIBLEY VINCENT P
4517	ROSE PAUL G	603	SAUERWEIN LUMBER CO	15626	SCOGGINS EMMETT W	19522	SIDWELL JACKIE
16745	ROSENRETER JACK	17127	SAULS ROY	9578	SCOGGINS CHARLES A	23122	SIEBELS RANDY W
13619	ROSS CAROL JOYCE	21884	SAWICKI JAMES L	22794	SCOGGINS DALE R	5494	SIES EUGENE R
3757	ROSS GENEVA	5949	SAWYER DONALD L	20340	SCOGGINS EST. RONALD E	19989	SIEVERS DAVID
15962	ROSS KENNETH	21999	SCARBOROUGH JACK B	21440	SCOGGINS JEFF	23144	SIEVERS DEBBIE
19564	ROTH DAVID F	14230	SCHAAF THERESA A	4670	SCOGGINS MIDDLETON P	21951	SIKORSKI LARRY W SR
18662	ROTSCH MARK W	6315	SCHAAF LEO K	22717	SCOGGINS ONE STOP	17135	SIMBURGER DONALD W
22353	ROULAND ELMAR	22137	SCHAAF ROBERT E		GROC & GAS	19948	SIMBURGER FAMILY FARM
16179	ROWDEN J FRANK	608	SCHAEFER WALTER S	22613	SCOGGINS ROBERT W	22383	SIMBURGER KEVIN D
22850	ROWLING RICHARD B	22282	SCHAEFER MARY E	3132	SCOTT JOHN	21547	SIMBURGER LARRY R
4488	RUBIS PAUL	23264	SCHAEFER TIMOTHY J	23508	SCOTT ROBERT L	8884	SIMMONS RIVERDEAN
19652	RUBY THOMAS	15846	SCHALLENBERG ROBERT E	1720003203	SCOTT BARBARA T	20077	SIMPSON HOWARD L
7437	RUCKER ESTATE ELMER A	11044	SCHALLER ALICE	18613	SCOTT DAVID R	17776	SIMPSON TIMOTHY B
4991	RUDOLPH ROBERT G	9272	SCHALLER ALICE	22680	SCOTT GINGER R	23178	SIMS GERALD R
22820	RUE ROBERT A	23137	SCHEAFFER BOB R	13175	SCOTT VIRGINIA	10450	SIMS JOHN L
1745	RUEHRUP EDWARD H	1423014518	SCHEFFEL JAMES	2320019388	SCOTT WENDY	20304	SINCLAIR JANE
2819	RUFUS CARL	2030003213	SCHEIFER FLOYD D	10557	SCRIVNER LOREN H	8380	SINGER MARGARETE
14913	RULO CAROLYN	7680	SCHELLER ELLEN L	8856	SEAGO JOSEPH	2920	SINGLER EDWARD J
10911	RUPPE JESSE	2330004951	SCHELLER DALE	22016	SEALS DENNIS	8235	SINGLER EST WILLIAM J
11834	RUPPE DENVER	18785	SCHELLER RANDLE R	3694	SEARLS ESTHER	12385	SINGLER THELMA A
21542	RUPPERT RUTH D	7310	SCHELM MICHAEL	8560	SEBESCHAK JOSEPH L	19630	SIX THIRTEEN ILL FARMS
14995	RUSH GEARLDEAN F	7963	SCHENHOFFER FRANK L	8214	SEBESCHAK MIKE	17667	SKELTON OPAL R
23182	RUSSELL DONNA	3682	SCHIESHNEK CARL H	18166	SEBRING LESLIE R	19094	SKIBBE ROBERT P
5808	RUSSELL EARL	10356	SCHLIEPER BEN	20745	SECOR SCOTT E	22103	SKINNER GLENN L
13328	RUSSELL EARL R	1339016976	SCHMIDT DAVID	21168	SEEHAUSEN SANDRA L	6075	SKINNER LUCILLE
16620	RUSSELL FRED	15847	SCHMIDT ELMA M	21053	SEEMES EUGENE L	3098	SKINNER RUBY
3609	RUTHERFORD BILLIE F	22895	SCHMIDT NOAH	21064	SEIBERT ROBERT B	9485	SKINNER TROY
22979	RUTZ GROUP INC	21729	SCHMITT LEWIS S	13395	SEIFRIED MARY L	22097	SKJERSETH DONNA J

13155	SLANSKI VICTOR	11470	SPENCER DONALD R	23062	STOCKL DENNIS W	23193	TANNER DAVID L
22562	SLEBODA RICHARD F	11975	SPICKERMAN ERNEST	14348	STOECKEL SHARON K	20838	TARRANT ELVIS L
1340006991	SLEDGE MARY L	22681	SPICKETT EVELYN M	5496	STOKES VIRGIL R	6367	TARTER DONALD C
19408	SLIGHTOM LARRY	20685	SPIER BERNARD A	23033	STOKES JAMES	22046	TASTY LEAN PORK INC
11678	SLIGHTOM THOMAS M	3833	SPINNER EDMUND F	1920008104	STOKES JEAN	16335	TATE DENNIS R
13276	SLIMAK MIKE	9889	SPIRES JOE	22796	STOLTE KENNETH O JR	22142	TAUL SHIRLEY E
20774	SLINKARD DARLENE	22566	SPRAGGS MARK SR	1630	STONE IRMA C	18868	TAULMAN MAXINE
10912	SLONE CHARLES D	22127	SPRING BRANCH FARM	15793	STONE LEON S SR	20152	TAYLOR GEORGE R
20506	SMALL PAUL L	19078	SPRING VALLEY FARM	21204	STONE RANDY A	14799	TAYLOR LOWELL W
9092	SMITH ANITA M	8412	SPRINGMAN VERNON L	22556	STONER RICHARD D	2598	TAYLOR OLLIE C
14210	SMITH PAULA F	7380	SPRINGMAN AL J	13279	STORMER VIRGIL K	18737	TAYLOR STEPHEN A
11581	SMITH BURDETTE I	22539	SPRINGMAN JOHN D	23100	STOUT JAMES E	19163	TAYLOR W D
18011	SMITH FRANKLIN H	22503	SPRINGMAN MICHAEL	19066	STOVER KEITH D	14645	TEETOR BARRY A
3369	SMITH LELIA B	16457	SPRINGMAN STEPHEN L	23314	STOVER MARY L	22052	TEPEN BERNARD E
18064	SMITH C D	18975	SPUDICK P D	3219	STRABLOW CHARLES J	18341	TEPEN JANICE I
23256	SMITH CHARLES E	1453	ST CATHERINE'S CHURCH	22682	STRACILO GERALD	23215	TESSARO LARRY E
15386	SMITH CHERYL E	9103	ST CLAIR LAUREL	20030	STRADER PATRICK	18722	THAXTON KEITH
1530009101	SMITH DANNY P	5567	ST PETERS RALPH B	17424	STRANG JOHN H	18758	THE AMES COMPANY INC.
1520009101	SMITH DAVID E	11883	STACK EDWARD A	13557	STRATMANN LOIS J	11523	THE ESTATE OF FRANK FITZGIBBONS
21649	SMITH DAVID E	14619	STACY DONALD K	19841	STRATTON KENNETH		
16380	SMITH DENNIS D	4998	STAFFORD ROBERT E	1791	STRAUBE ESTHER O	9465	THE ESTATE OF GLORIA (BARKLEY)BONN
1550009101	SMITH DENNIS J	20958	STAGGS JAMES B	13991	STREBEL DONALD E		
22492	SMITH DONALD L	21393	STAHLSCHMIDT JEROME R	14354	STREEB RAY	23088	THE ROSE
22563	SMITH EDWIN R	18095	STAJDUHAR JUANITA	22001	STREIGHT CHARLES W	2140015795	THEILKEN JAMES A
4424	SMITH ERNEST C	15569	STAMPS GRACE W	17049	STRIPLIN BETTY L	21833	THEIS ARTHUR L
13071	SMITH GEORGE S	6226	STAMPS KERMIT Z	23123	STROBECK BRIAN K	1350002970	THEIVOGT REGINA
18440	SMITH GERALD W	13482	STANDEFER KENNETH	10814	STROHBECK ROY L	16132	THIEBAUD GEORGE G
1360002442	SMITH IRVIN J	9038	STANDEFER TEDDY A	22197	STROHBECK RONALD G	13992	THOMAS CLEO M
1818	SMITH J PAUL	16990	STANFORD ANTOINETTE	8886	STRONG MARY T	13915	THOMAS CLOTEE
18441	SMITH JERRY C	7312	STANKA HENRY M	21923	STUCKER JOHN	23289	THOMAS DAVID
23219	SMITH NANCY K	8288	STANTON NANCY	9960	STULTS ROBERTA	22474	THOMAS GARY A
19196	SMITH PAUL E	9334	STANTON NANCY L	2652	STULTS DOROTHY B	13133	THOMAS JERLEAN B
1520001485	SMITH PAULA	23005	STARK CARL W	1910004919	STULTS REBECCA	20951	THOMPSON MARK D
11458	SMITH SHARON K	21246	STARKS IDA M	19886	STULTS THOMAS	18636	THOMPSON MYRON E
22206	SMITHSON REGINA	10248	STARR BOB	22440	STUMBOUGH JANICE E	3221	THOMPSON ROSE M
4426	SNEDEKER MARTHA	19114	STASSI ANTHONY V	1040	STUMPE L G	22002	THOMPSON BONNIE
1420005095	SNELL DELORES K	21600	STATON BARBARA E	14566	STURGILL WARREN A	10959	THOMPSON BROTHERS
22493	SNELL RICHARD K	17460	STAUFFER COLLIS	1430014818	STUTZ ELAINE	21399	THOMPSON JUDITH R
18170	SNIDER H C	16813	STAYTON DANNY	20566	SULLIVANT EDWARD G	23101	THOMPSON MARY
16024	SNIDER WILLIAM T II	13278	STECKEL JOHN M	21919	SULLIVANT JOHN	18446	THOMPSON WILLIAM M
4217	SNOPKO FRANCIS J	20073	STEELE RICHARD A	16856	SUMMERFIELD LAVINIA C	18870	THORNSBURY PHYLLIS
15567	SNOW LEROY	19187	STEEN HARRY M	21653	SUMMERS JAMES T	10360	THORNTON ETHAN A JR
1930012556	SNOW THOMAS	13842	STEGMAN NORBERT R	21527	SUMMERS JOHN F	9533	THORPE ALBERTA
5435	SNYDER LYMAN M	22476	STEINER C. REGAN	21920	SUMMERS PAULA	22764	THRASHER H E
19947	SNYDER JACK H	20050	STEINHAUSER MARGARET M	7847	SUMMERS WILLIAM H	18584	THUNDERBIRD LAKE ASSN
1430005759	SNYDER PEARL	6992	STEINKUEHLER EUGENE	3525	SUMPTER EST. VERA C	1212	THURSBY EST. WENDELL W
1730002817	SOCHE THERESA	4276	STEINMANN FARM	19476	SUNSET INN MOTEL	11133	THYER A R JR
22419	SOLID ROCK	23213	STEPHENS PATRICIA J	17724	SURRATT E L	21528	TIEK FREDERICK A
21103	SOLLBERGER EVELYN A	17085	STEVENS MARLENE R	16815	SUTTON HARRY	16890	TIEMAN HERBERT C
13665	SOUTIA W G SR	23614	STEVENS WALTER W	15297	SWAN DELTA M	17717	TIEMANN JOSEPH W
9368	SPAHR BETTY J	22210	STEVENS DAVID N	16334	SWARRINGIN CLYDE SR	14930	TIERNEY JOHN C
22732	SPANGLER BRITT M	16867	STEVENS HELEN L	15756	SWIFT LEO SR	14699	TIGHE MARGARET A
21044	SPANN H L	1420014310	STEVENS TINA	21535	SYDDALL GERALD E	21977	TILLEY RANDY W
10620	SPARKS SAMPSON A	16928	STEWART JOHN W	15920	SYKES DARLYNE E	13368	TIMMERMEIER JANET
16690	SPATAFORA JOHN	20662	STEWART MARTIN W	15027	TALCOTT WILLIAM C	7864	TIMMONS WAYNE F
15293	SPAULDING EST JACK	19523	STICKLER ELIZABETH J	14738	TALLEY CAROLYN	10251	TIMS WILMON
22000	SPEARS GARY A	1720000663	STIEGLITZ WALTER	15629	TALLEY G L	23343	TIPSWORD ROBERT L
17063	SPEARS GEORGE	12558	STILLAR CECIL R	7685	TALLEY GEORGE J	21911	TITE RONALD G
23092	SPEARS JOSEPH H	8496	STILTS CAROL	22735	TALLEY WENDY L	18111	TITSWORTH CHARLES O
4427	SPEARS WINAND N	13914	STINNETT MYRLE J	12947	TALLMAN SEAN	2163	TITSWORTH CHARLES
17669	SPENCER CAROL	22806	STIVERSON HAROLD E	22258	TALLY GARY R	17767	TITSWORTH JOHN L

14914	TOBEY'S D. J.'S	21952	VANNOY GARY E	23274	WALSH MARK A	12691	WEEKELY MARIE M
13486	TODD ELMER E JR	20870	VARBLE MARTIN D	10461	WALSH JAMES M	22822	WEIDLER DAMIAN V
1620004077	TODD PEGGY J	11100	VARGE ANN	21150	WALSH LEROY E	1444	WEIGEL EST ROBERT
4086	TOLBY NORA	22008	VAUGHN CINDY L	20458	WALSH MATTHEW	22494	WEILER COLLENE
10362	TOLLIVER ALLAN	22265	VAUGHN SIMEON	2392	WALSHVILLE MASONIC LDG 475	22621	WEINDEL BROS
20537	TOMPKINS LEA	23423	VAUGHT MILLER SR	3838	WALTER PHILIP B	2782	WEISE LEONARD
1350013402	TOSH DONNA L	12750	VEDDER FERN E	21574	WALTER CEALY S	900016984	WEISER ARNO
20577	TOSH DONNA L	22752	VEDDER TOM	1650000237	WALTERS BONITA	20883	WEISS DAVID E
21116	TOSH KAREN S	18055	VERNATTI THOMAS J	21590	WALTERS STEVEN M	19064	WELCH ARMAND L
1320010261	TOSH NANCY	7802	VICE PHYLLIS L	20002	WALTON DENISE	22098	WELDON DAVID H
9668	TOWELL ROSALIE	18186	VICKERY ALFRED J	22810	WALTON MICHAEL	10155	WELGE ALBERT C
1950004919	TOWERY VICKI	23139	VOEGELI JANET E	4639	WALTON WILLIAM D	14533	WELKER ALAMO F
20086	TRADER CHARLES O	1730003203	VOGEL CAROL M	12283	WANGLER LINDA S	11196	WELL EDWIN JR
22604	TRANTER THOMAS C	18728	VOGEL MERLE E	12171	WANGLER LINDA	1340003705	WELL LONDA
19927	TRASK BRADLEY	13369	VOGT CLARK	20686	WARD MICHAEL E	12193	WELLER OLIVER A
21054	TRASK VIRGINIA	12261	VOLLINTINE WESLEY	15067	WARD DONALD	1216	WELLER RALPH
16698	TRAUB CAROL J	1920005052	VOLLINTINE LONNIE	21811	WARD MARILYN	22743	WELLING LOUIS H
17177	TRAYLOR GEORGE R	10628	VOLLMAR MILDRED E	22631	WARD WILLIAM D	1530005204	WELLS DOLORES
1507	TRAYLOR DONNA	20775	VOYLES JEFFREY E	13715	WARFIELD MAC G	7603	WELLS MARLENE
18296	TRICKEY PAUL E	16577	W G K RADIO STATION	16565	WARFORD JAMES R JR	21953	WELLS STEVEN J
5378	TRILL CHARLES W	2893	W HAROLD & GERALDINE	21858	WARIX DONALD L	22579	WELSHANS FRED L JR
20869	TRIPLE L		LANGE TRUST	21224	WARIX WILLIAM E	11249	WELTON FORD
22718	TRIPP EVERETT W	2320023315	WADE JANIS M	22181	WARIX WILLIAM L	22605	WENDLE EUGENE R
19946	TRONE MAEGEN	20473	WADE PEGGY	22395	WARLICK PHIL	1420005759	WESSEL KATHERINE
11471	TSCHANNEN MORRIS E	1420000648	WADLOW ELVA	14743	WARNER DONALD L	10188	WESTERN UNION TELEGRAPH CO
11841	TUCKER RUSSELL J	19860	WADLOW STEWART SR	22275	WARNER PAUL G	1930009077	WESTFALL KENDRA L
2157	TUCKER BEVERLY	7041	WAGENBLAST JAMES	23316	WARREN BYFORD	15391	WHALEY KENNETH
16182	TUCKER AUDREY	4496	WAGENBLAST ROY A	22488	WARREN JAMES K	16906	WHEELER RUBY G
22451	TUCKER DENNIS	1430003621	WAGENBLAST WALTER L	21206	WATERS DEBRA A	3707	WHEELER ADELIA M
12109	TUCKER EDITH M	20522	WAGGONER JOHN F	18922	WATERS GEORGE W	21605	WHEELER TRANSPORT CO
21128	TUCKER ESTHER	10196	WAGHORN JAMES C	21598	WATERWAY COMM SYSTM INC	20807	WHITAKER MARY
13895	TUCKER HERMAN H	22355	WAGLER STEVE	12234	WATKINS BILL	1930011004	WHITAKER BETH A
20663	TUCKER NORMAN R	2357	WAGNER OREN	16466	WATKINS DAVID H	18857	WHITAKER JACK R
21988	TUCKER WAYNE L	3939	WAHLE HAROLD	15922	WATKINS RUTH	12111	WHITE GEORGE W
13487	TULLEY HARRY A	6603	WAIT ROCHELLE	8632	WATSON JOHN A	15452	WHITE ALBERT H
9236	TURNER JERRY C	9637	WALDEN LAURA M	18644	WATSON PAUL L	22076	WHITE BROS
3427	TURNER VERNA L	22773	WALDEN ANDREW P	14005	WATSON EARL JR	9073	WHITE CHARLES L
8798	TWITCHELL EVELYN	4099	WALDEN RONALD D	5150	WATSON ESTATE ARTHUR L	14240	WHITE CHARLES N
12690	ULERY JAMES W	10665	WALKER BARBARA	4859	WATSON HAROLD W	17927	WHITE CHARLES S
21396	ULERY RALPH	20941	WALKER BILLY R	1460003961	WATSON MARGIE	21846	WHITE DAVID C
22145	ULRICH GUY	11977	WALKER DONALD E	14239	WATSON ORAL D	17317	WHITE ELVELOR
21346	UMBERGER DENNIS C	21263	WALKER FRED	20139	WATT ANTHONY R	20004	WHITE JOHN
5280	UNION FOREST CHURCH	22104	WALKER HAROLD E	17415	WATT MARGARET R	22728	WHITE KATHLEEN K
20889	UNITED SATELCO TRAN INC	16754	WALKER SONYA	19910	WATT STEPHEN E	16469	WHITE NORMAN H
687	URBON FRANK	21689	WALKER TAMMY	21549	WATTERS LESTER J	22010	WHITE PEGGY S
22444	URBON MARY	22344	WALKER TERRY D	23081	WATTLES DOUGLA W	15857	WHITE RICHARD E
10803	URBONOS DARRIN	12192	WALKER WALTER E	16263	WATTS FRANCIS D	1330001079	WHITE THOMAS D
20476	USSERY GERALD L	20834	WALL DANNY L	19620	WATTS HENRY V	1730005625	WHITE THOMAS DAVID
16465	VAHLE ILDA M	18832	WALL LEROY	21650	WATTS KEITH W	19164	WHITEHEAD FLORENCE L
18505	VALDES ALFRED	21781	WALLACE EDDY L	21081	WATTS WILLIAM T	20236	WHITLOCK JOHN L
15304	VALENTI TERRY L SR	5912	WALLACE FRED H	21185	WAYMAN TOM	18303	WHITLOCK KENNETH D
22552	VALLERY RONALD E	20223	WALLACE KENNETH E	10340	WEATHERFORD DEBBIE	14008	WHITLOCK MILFORD
20905	VAN GIESEN JOHN C	21121	WALLACE LINDA L	3765	WEATHERFORD GLENN P	17103	WHITT BOBBY C
22809	VAN HORN DONNA C	15660	WALLACE PAUL K	9672	WEAVER LAMAR	21726	WHITT JERRY L
21417	VANAUSDOLL MYRON J	18189	WALLACE VICKI L	3389	WEBB CAROLYN	1634	WHITTEN TORNIE A
8523	VANCE CARL E	21230	WALLECK ROBERT E JR	14108	WEBB HENRY	16868	WHITWORTH ARLENE M
10819	VANDENBERGH LEE	21844	WALLIS MICHAEL D	19536	WEBB MARY	1840015236	WHITWORTH CINDY
17102	VANHUSS DUSTY R	14976	WALLIS WILLIAM J	23367	WEBB ROBERT J	18297	WIBEL HAZEL A
14897	VANMETER RICHARD	5009	WALLKOFF CLEMENCE H	16338	WEBER VERNON G SR	11199	WIGGINS EVALEAN
22902	VANMIDDENDORP DONNA	16761	WALLS ALFRED	19747	WEBER VICTOR L JR	12941	WILCOX RAYMOND
22017	VANMIDDENDORP LARRY G	10122	WALLS GRACE M	21553	WEED CATHERINE S	6082	WILLARD GENE

23249	WILLARD ROBIN	19537	WOODS HARRY JR
13989	WILLIAM RAY STINNETT EST.	15187	WOODS JULIE J
4498	WILLIAMS KENNETH C	1920015392	WOODSON ALAN
21894	WILLIAMS NANCY E	19106	WOODSON ALAN R
15967	WILLIAMS ROBERT JR	15204	WOOLDRIDGE DONALD K
17488	WILLIAMS DONNA	15117	WOOLSEY JAMES R
21486	WILLIAMS KEVIN D	21697	WOOLSEY RANDY C
22025	WILLIAMS LONNIE	16930	WOOLSEY RICHARD C
1320003389	WILLIAMS MARY	15447	WOOLSEY ROBERT L
15312	WILLIAMS MERLE L	1540010631	WOOLSEY SHAWN
21782	WILLIAMS RICHARD K	21708	WORKER MICHAEL S
19344	WILLIAMS ROBERT E	9237	WORKMAN RAYMOND E
22844	WILLIAMS ROY H JR	5832	WORKMAN VERA
23298	WILLIAMS THOMAS K	5833	WORLEY LEWIS J
16137	WILLIAMS VIVIAN M	20376	WORMAN MICHAEL J
22971	WILLIAMSON JESSIE L	17905	WORTHEN ALICE R
3770	WILLS CHESTER	19029	WREN DONALD D
5159	WILSON MARTHA	13420	WRIGHT DOROTHY A
19589	WILSON W E	12124	WRIGHT ELMER
15924	WILSON DONALD G SR	2040017247	WRIGHT VIRGIL JR
3227	WILSON ESTATE GLEN E	22947	WULF KENNETH M
15859	WILSON JAMES D	19748	WYATT BARBARA M
21180	WILSON LESTER D	17705	WYATT CECIL N
15581	WILSON MARCIA J	22370	WYDE GERALD
19427	WILSON MARGARET E	11588	WYMAN LENA
20295	WILSON RUTH G	16031	WYMAN EDNA J
20005	WILSON VERNON B	16703	YANCIE RICHARD
720	WILTSHIRE SHIRLEY	22632	YARD RAYMOND R JR
7629	WILTSHIRE SHIRLEY	13442	YAUORNIK ROBERT T
23007	WIMMERSBERG WILLIAM R	20882	YEAGER GEORGE K
22366	WINKLER JUDY	22378	YORK JAMES L
19015	WINNETT DAVID A	22754	YOST PAMELA S
20464	WINNIE DONALD L JR	22384	YOTTER JOHN D
20890	WINSLOW DONALD	22866	YOUNG EDWARD E
21425	WINSLOW JAMES E	1642	YOUNG WILLIAM A
10057	WINTER EMMA	15313	YOUNG DONNA J
23216	WINTERBERGER BENJAMIN E	2607	YOUNG ALBERT V
13284	WINTERBOTTOM EST KENNETH	6191	YOUNG GENE S
15582	WISDOM WILLIS D	22049	YOUNG GERALD
22489	WISE ROBERT E SR	21709	YOUNG RUSTY C
21874	WISELOGEL MICHAEL J	20489	YOUNG STEPHEN L
19932	WISEMAN FRED E	17275	YOUNG TRUST PAUL
23063	WISER BILL	20258	YOUNGBLOOD GARY W
20876	WISNESKY PEGGY	19148	YOUNGBLOOD WILLIAM O
8070	WITCHER PATRICK H	22050	YOUNKER RALPH E
17104	WITTMAN NORBERT E	19034	ZARGES K S
18705	WITTMAN SHIRLEY J	8615	ZIEGENFUSS ALYS F
21276	WOLF KEN L	7386	ZIMMERMAN DONALD L
5414	WOLFF ALLEN W	1430005180	ZIPPRICH PHYLLIS
17466	WOLFF CATHERINE J	21035	ZIPPRICH ROGER M
22048	WOLSCHLEGER CONNIE L	10115	ZIRGES ROBERT E
22954	WOLVERTON JACK L	22483	ZOTTI TIMOTHY J
8709	WOMACK TOM L	18707	ZUMWALT DONNA
23070	WONZIK VIVIAN	21783	ZUMWALT RICHARD L
736	WOOD GRACE	22769	ZURHEIDE FRED W
17644	WOOD JEANE E		
22328	WOOD NEIL		
23299	WOOD SAMMY D		
20189	WOOD WILLIAM P		
13447	WOODEN LAURA E		
16251	WOODS DANIEL D		



MJM has partnered with Vanilla Direct for several years to offer members a convenient way to pay their electric bill with cash at participating retail locations. Now, paying in cash is even simpler. A new scannable code has been added to the back of your bill stub, allowing quick and easy processing at approved stores—no account lookup required.

When you choose this payment option, Vanilla Direct charges a \$1.50 convenience fee. Please note that MJM does not receive any portion of this fee; it is collected solely by Vanilla Direct for providing the service.

For details on payment locations and important information, please review the Terms & Conditions below. While logged into your SmartHub account, you can also verify payment locations under the Bill & Pay > Pay by Cash tab. Examples of available payment locations include Dollar General, Walgreens, CVS, Walmart, Dollar Tree, and Family Dollar.



Use the barcode to pay your bills with cash at a VanillaDirect Retailer.

SAMPLE

A convenience fee of \$1.50 will be applied to your payment.




TERMS & CONDITIONS: By accepting or using this barcode to make a payment, you agree to the full terms and conditions, available at vanilladirect.com/pay/terms. After successful payment using this barcode, you may retrieve your full detailed e-receipt at vanilladirect.com/pay/ereceipt. The majority of Pay by Cash participating stores will accept cash payments up to a maximum amount of \$500.00.

SPECIAL PRICING AVAILABLE ON GENERATORS



MJM members can order Generac Generators at cost through MJM Electric Cooperative. Please contact our office during regular business hours; Monday – Friday, 7:30a-4:00p to get a quote and start your order.

Please consult your trusted electrician of choice for installation and to determine the proper size generator you will need for your home prior to calling for an order.

All generators ordered through MJM will be special order items that will take a minimum of 4 weeks to arrive at MJM headquarters. Once they arrive, you will receive a confirmation call so you can arrange a time for pickup. **Generator invoices must be paid by cash or check.**

To order, call the MJM Office at 217-707-6156, press option 2 for the "Billing Department."

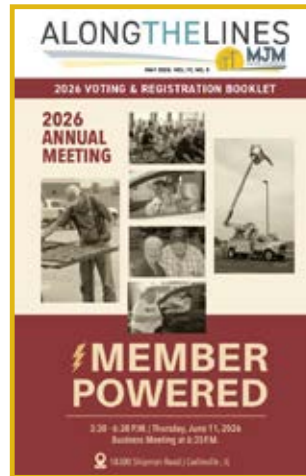
For more details, go to:
www.mjmec.coop/generator-program



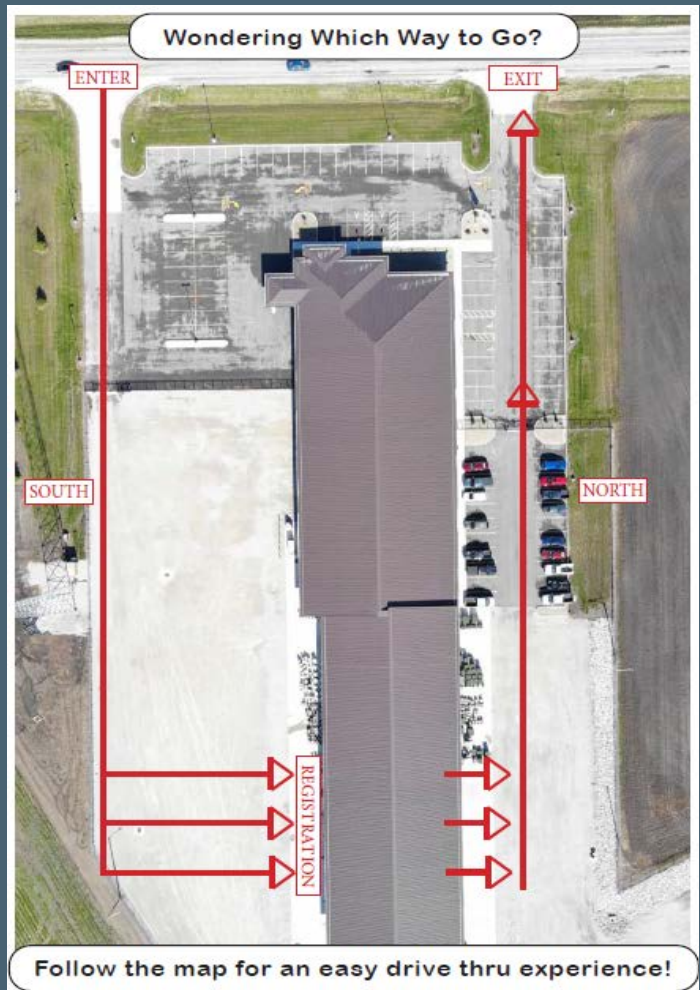
MJM'S 87TH ANNUAL MEETING

JUNE 11th, 2026 - 3:30pm to 6:30pm*
18300 Shipman Road, Carlinville, IL

*The business meeting will begin at 6:35pm after the drive-thru event. Parking is available.



Bring your Annual Meeting Booklet for easy registration and voting!



COORDINATING POWER ACROSS THE GRID

by Eric Cooper, MJM Communication and Member Services Coordinator



When you flip a switch, electricity is there—instant, reliable and ready to power your day. But behind that simple moment is a carefully coordinated system made up of many “grid power players,” all working together to keep the lights on.

At MJM, we think it’s important for our members to understand how this system works and who’s involved in delivering the electricity you depend on every day. It all starts with generation owners and operators. These are the facilities that actually produce electricity. Power plants convert energy from a variety of sources—such as natural gas, coal, nuclear energy and renewables like wind or solar—into electricity. These facilities may be owned by electric utilities, government entities or private companies. In most regions, a diverse mix of generation sources helps ensure reliability while also supporting affordability and sustainability goals.

Once electricity is generated, it needs to travel—often across long distances—to reach local communities. That’s where transmission owners and operators come in. Using high-voltage transmission lines strung along massive towers, they move bulk electricity from power plants to local areas. You’ve likely seen these lines along highways or across open land. Because electricity can’t easily be stored in large quantities, this system must constantly move power from where it’s produced to where it’s needed, all in real time.

MJM is a member of Wabash Valley Power Alliance (WVPA), our local generation and transmission partners. WVPA name is a private, not-for-profit wholesale power provider that generates and transmits electricity to MJM and 20 other electric cooperatives in our region.

Coordinating the flow of large amounts of power is a complex job, especially across multiple states or regions. In many parts of the country, organized wholesale markets, managed by Regional Transmission Organizations (RTOs) or Independent System Operators (ISOs), handle this responsibility. These entities don’t typically own power plants or transmission lines. Instead, they act as traffic controllers for the grid—balancing supply and demand every second of the day and directing which power plants should generate electricity at any given moment. MJM works with WVPA to help ensure reliable service and cost-effective energy for our members.

Then there’s the part of the grid most people are familiar with—your local electric utility. That’s where MJM comes in. We take electricity from the high-voltage transmission system and deliver it directly to your home, farm or business through lower-voltage distribution lines. We also maintain utility poles, power lines, electric substations and other essential equipment in our community.

When storms roll through or outages occur, our crews are the ones working to restore power safely and as quickly as possible. At MJM, we’re proud to serve 7,820 members across 7 counties, and we’re committed to providing reliable, affordable electricity you can count on.

Finally, there’s you—the end user. Homes, businesses and industries all play a critical role in the grid. Your energy use directly influences how much electricity needs to be generated and delivered at any given time. During periods of high demand—like hot summer afternoons or cold winter mornings—the grid must work harder to meet increased usage. Simple steps, like adjusting your thermostat or running appliances during off-peak hours, can make a meaningful difference.

Beyond these key power players, there are additional organizations working behind the scenes to ensure our grid remains reliable and secure.

The North American Electric Reliability Corporation (NERC) develops and enforces reliability standards through a collaborative stakeholder process that includes utilities, regulators and industry experts. NERC also monitors the grid, trains personnel and assesses risks to help maintain a strong and resilient electric system across North America.

Meanwhile, the Federal Energy Regulatory Commission (FERC) provides federal oversight. FERC regulates interstate transmission of electricity and oversees wholesale energy markets to ensure they operate fairly and efficiently. It also plays a role in hydroelectric licensing and energy infrastructure development, helping ensure safe and reliable energy delivery nationwide.

From generation to transmission to your local utility, it takes a coordinated effort to power your everyday life. At MJM, we’re proud to be your trusted energy partner—and to play our part in keeping the grid strong for the communities we serve.

Grid Power Players

Electricity is available with the flip of a switch, but it travels great distances and is coordinated among multiple entities before it reaches your home or business. Take a look at the grid power players that ensure you receive reliable electricity.



1. Generation Owners & Operators

Power plants can be owned and operated by electric utilities, government entities or other private companies. Power plants produce electricity by converting energy from various sources—like natural gas, coal, nuclear, or renewables—into electricity.



2. Transmission System Owners & Operators

The transmission grid moves large amounts of electricity over long distances using high-voltage transmission lines attached to large towers. Like power plants, these lines can be owned by a variety of public and private companies.



3. Organized Wholesale Markets

In many parts of the country, Regional Transmission Organizations (RTOs) & Independent System Operators (ISOs) coordinate the flow of electricity across regions by balancing supply and demand in real time and managing the dispatch of electric generation and transmission across large areas with the participation of generation and transmission owners.



4. Electric Utilities (That's Us!)

Electric distribution utilities take electricity from the transmission system and deliver it to homes and businesses through lower-voltage distribution lines. They also maintain local power lines, poles and other essential equipment.



5. End Users (That's You!)

End users consist of the homes, businesses and industries that consume electricity. Their demand drives how much electricity is generated and how the grid is managed in real time.

Other Key Players:

NERC: The regulatory authority that develops and enforces mandatory, reliability standards for the North American bulk electric grid. (Standards are developed through a stakeholder process.)

FERC: Independent federal agency that oversees interstate transmission and wholesale electricity sales, ensuring fair access to the grid.



ENERGY EFFICIENCY TIP OF THE MONTH

During these warm summer months, a smart thermostat can help keep your home comfortable while reducing cooling costs. Smart thermostats learn your routine and automatically raise the temperature when you're away and cool things down before you return, avoiding unnecessary energy use. You can also adjust settings remotely from your phone, so you're never cooling an empty house. Setting your thermostat a few degrees higher while you're away or asleep can lead to significant savings. Many smart thermostats provide reports and tips, helping you fine-tune your energy use and stay cool while keeping your electric bill in check.

TIPS TO AVOID ENERGY SCAMS



Protect your accounts by enabling multi-factor authentication (MFA) wherever possible. MFA adds an extra layer of security by requiring a second step—like a code sent to your phone or an authentication app—beyond just your password. Even if a scammer steals your login information through phishing or data breaches, MFA can stop them from accessing your account. Choose app-based authentication over text messages when available, as it's more secure. Taking a few minutes to turn on MFA for email, banking and additional online accounts can significantly reduce your risk of identity theft and financial loss.

Source: staysafeonline.org

