

ALONG THE LINES



DEDICATED TO PROVIDING RELIABLE SERVICE FOR OUR MEMBERS.

MARCH 2023
VOL.16, NO. 3

ENVELOPE ADVANCES

Roofing, insulation, and ventilation. p.4

GENERATORS

A list of do's and don'ts during operation p.5

2023 VEGETATION MANAGEMENT

Article & details on p.6 & 7

MARCH CALENDAR

- 3rd: National Anthem Day
- 6th: National Oreo Cookie Day
- 10th: National Preschooler's Day
- 12th: Clocks "Spring Forward!" Day
- 17th: St. Patrick's Day
- 20th: First Day of Spring
- 22nd: National AG Day
- 31st: National Farm Workers Day

UPCOMING

- Apr. 7th: **Office Closed - Good Friday**
- Apr. 18th: Lineworker Appreciation Day
- Jun. 8th: 2023 ANNUAL MEETING

HOLIDAYS OBSERVED:

New Year's Day, Good Friday, Memorial Day, Independence Day, Labor Day, Veterans Day, Thanksgiving Day, the day following Thanksgiving, and Christmas Day.

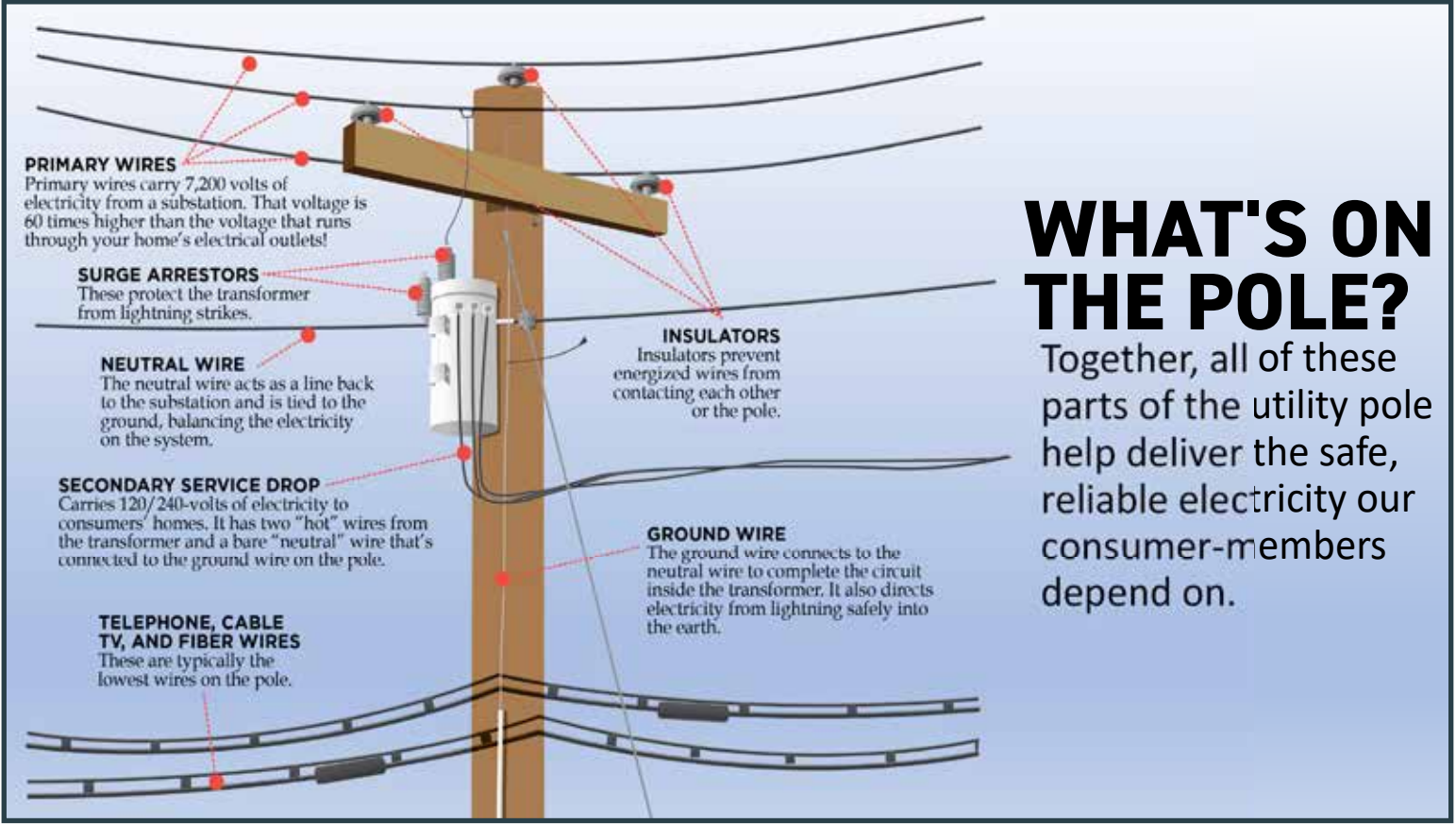


OFFICE: 217-707-6156
FAX: 217-854-3918

18300 SHIPMAN ROAD (PO BOX 80)
CARLINVILLE, IL 62626

WWW.MJMEC.COOP

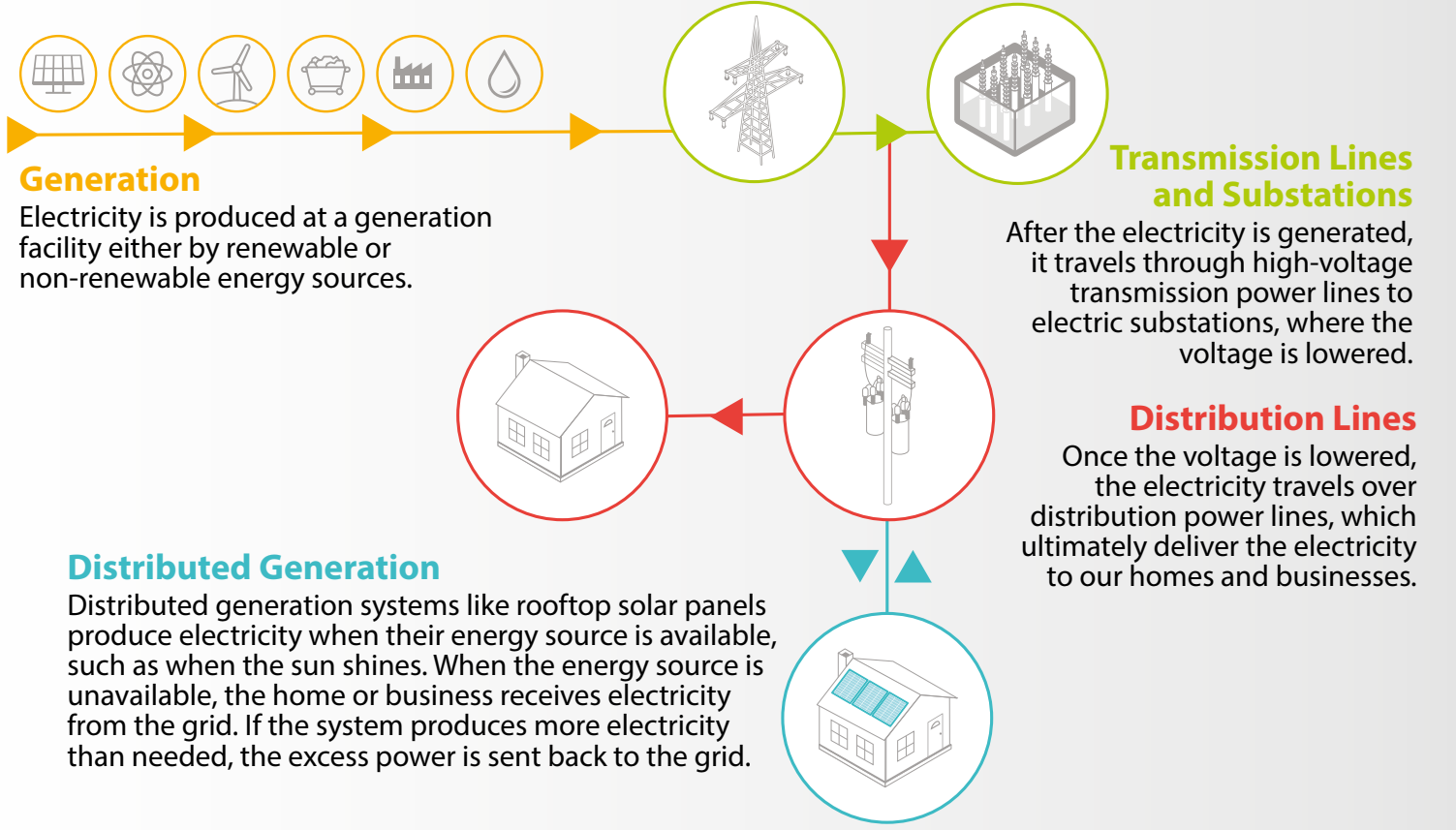




WHAT'S ON THE POLE?

Together, all of these parts of the utility pole help deliver the safe, reliable electricity our consumer-members depend on.

HOW ELECTRICITY REACHES YOU



Generation

Electricity is produced at a generation facility either by renewable or non-renewable energy sources.

Transmission Lines and Substations

After the electricity is generated, it travels through high-voltage transmission power lines to electric substations, where the voltage is lowered.

Distribution Lines

Once the voltage is lowered, the electricity travels over distribution power lines, which ultimately deliver the electricity to our homes and businesses.

Distributed Generation

Distributed generation systems like rooftop solar panels produce electricity when their energy source is available, such as when the sun shines. When the energy source is unavailable, the home or business receives electricity from the grid. If the system produces more electricity than needed, the excess power is sent back to the grid.

ALONGTHELINES

by MJM Electric Cooperative
www.mjmec.coop

18300 Shipman Road (PO Box 80)
Carlinville, IL 62626

Office: 1-217-707-6156

Pay by Phone: 1-855-313-6314

Office Hours:

Monday – Friday 7:30a.m.–4:00p.m.

How to report an outage:

Call 217-707-6156 or use your SmartHub app.

- When you report an outage, give your name and location number.
- Before calling, check your fuses or circuit breakers.
- Check with your neighbors. Call to report hazardous conditions.

Please do not report outages on Facebook/Social Media.

Board of Directors

Chairman: W. Kay Schultz.....Godfrey
Vice Chairman: Charles Huebener.....Brighton
Secretary: Marcie Tonsor.....Jerseyville
Treasurer: Robert Moore.....Medora
 Robert Lehmann.....Girard
 Tyler Heyen.....Raymond
 Dwayne Milner.....Piasa
 James R. Niemann.....Litchfield
 (Vacant).....(District 8)

Staff

Joe Heyen.....President/CEO
 Jeremy Pattillo.....Director of Finance and Accounting
 Jennifer Peterson.....Executive Administrator
 Matt Eisenmenger.....Director of Operations
 Bob Brandon.....Director of Engineering

Editor

Eric Cooper.....Communications &
 Member Services Coordinator

MJM Along the Lines (USPS 854-620) is published monthly for \$3.00 per year by MJM Electric Cooperative, Inc., P.O. Box 80, Carlinville, Illinois 62626. Second-class postage paid at Carlinville, IL. POSTMASTER: Send Address changes to MJM Along the Lines, P.O. Box 80, Carlinville, IL 62626.



A Touchstone Energy® Cooperative

IN THIS ISSUE

- 04 **Home Envelope Advances**
Upgrades that keep your house sealed & energy efficient.
- 05 **Play It Safe**
The Do's and Don'ts of operating Generators.
- 06 **Importance of Tree Trimming**
Why vegetation management is necessary and important.
- 07 **ROW Schedule for 2023**
"Right-of-Way" & vegetation management schedule for 2023.

PLEASE RECYCLE



SAVE THE DATE

06

08

23

2023 ANNUAL MEETING

Energy Efficiency Tip of the Month

Washing windows and screens is a great way to practice energy efficiency during spring cleaning. Clean windows and screens make your home brighter by allowing more sunlight in, reducing the need for lamps and fixtures. Clean screens also allow more fresh air in the home when the windows are open to recycle indoor air. Natural light and clean air are energy savers, and they enhance overall health and productivity.

Source: energy.gov

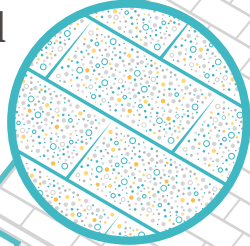


Envelope Advances

Improving a building's efficiency can usually be accomplished with simple methods like caulking, sealants and insulation. But the movement toward ultra-efficient homes and businesses has brought amazing innovations to the building envelope—walls, windows, roof and foundation—that minimize the energy it takes to keep the inside space conditioned and comfortable. Here are some of the latest advances in this growing field.

Cooling roof material

Highly reflective granules reduce solar heat entering the building



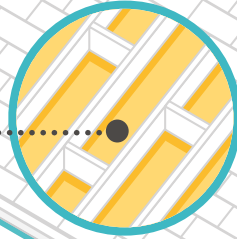
Metal roofing

Effective at reflecting heat away from the building



Radiant barrier

Foil-lined foam insulation board covering interior side of the roof



Conditioned attic space

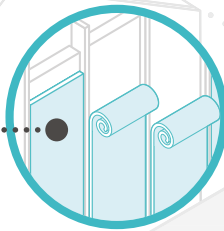
Attic insulation

High-R fiberglass batting reduces heat/cold loss



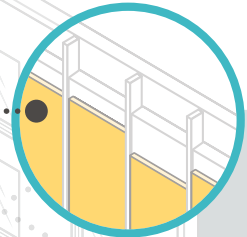
Aerogels

Thin, porous material; flexible and extremely efficient insulator



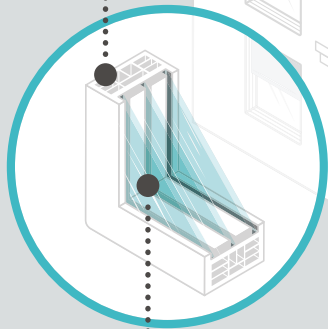
Vacuum insulation panels

Thin, porous sheet wrapped in aluminum to reduce heat transfer



High-performance window frames

Vinyl or fiberglass frames with multiple insulation-filled cavities



Automated window shades

Exterior or internal blinds that adjust automatically to block sunlight in summer and admit it in winter



Insulated glass door

Durable fiberglass door with foam insulation and treated, multiple-paned window



Highly insulated glass

Multiple panes with transparent, insulative inserts like aerogels or inert gas

Conditioned living space

Reflective glass

Low-emissivity coatings to control heat transfer



PLAY IT SAFE:

10 DO'S AND DON'TS WHEN USING PORTABLE GENERATORS

BY ABBY BERRY (NRECA)

Storm season is upon us, which means greater potential for power outages. If you're planning to use a portable generator in the event of an outage, MJM reminds you to play it safe.

With proper use and maintenance, portable generators can provide great convenience during an outage. However, when generators are used incorrectly, they can be extremely hazardous. In a 2022 report, the Consumer Product Safety Commission estimated 85 U.S. consumers die every year from carbon monoxide (CO) poisoning caused by gasoline-powered portable generators.

Here are 10 do's and don'ts to keep in mind when using portable generators:

1. **DO:** Install backup CO alarms.
2. **DO:** Keep children and pets away from portable generators at all times.
3. **DO:** Position generators at least 25 feet outside the home, away from doors, windows and vents that can allow CO to enter the home.
4. **DO:** Ensure your generator is properly grounded. Use a portable ground fault circuit interrupter (GFCI) to prevent electric shock injuries.
5. **DO:** Use three-pronged extension cords that are rated to handle the load of the generator. Inspect extension cords for cuts, frays or other damage before use.
6. **DON'T:** Operate a generator inside your home or an enclosed (or partially-enclosed) space. Generators produce high levels of CO, which can be deadly.
7. **DON'T:** Open windows or doors while the generator is running.
8. **DON'T:** Rely on generators as a full-time source of power. They should only be used temporarily or in emergency situations to power essential equipment or appliances.



Position portable generators at least 25 feet outside the home, away from doors, windows and vents that can allow CO to enter the home.

Photo Source: Honda

9. **DON'T:** Overload generators. They should only be used to power essential equipment. Make sure your generator can handle the load of the items you plan to power.

10. **DON'T:** Connect generators directly into household wiring unless you have an appropriate transfer switch installed. If a generator is connected to a home's wiring without a transfer switch, power can backfeed along power lines and electrocute utility lineworkers making repairs.

While generators provide convenience during power outages, they can quickly become hazardous—even deadly—if improperly operated. Before you operate a portable generator, be sure to always thoroughly read the owner's manual for important safety information and tips.



Before you operate a portable generator, be sure to thoroughly read the owner's manual for important safety information and tips.

Photo Source: Honda



IMPORTANCE OF TREE TRIMMING

IMPROVED SERVICE FOR ALL MEMBERS

BY: ANNE PRINCE (NRECA)

One of the things we love best about our community is the natural beauty that surrounds us. We are fortunate to have so many trees that offer beauty, shade and a habitat for all sorts of birds and other wildlife. We know that you appreciate our community for many of the same reasons. At MJM, we strive to balance maintaining beautiful surroundings and ensuring a reliable power supply by keeping power lines clear in rights of way (ROW).

While we recognize and appreciate the beauty of trees, there are three main benefits to tree trimming in ROW areas. However, before touching on the main reasons, let me explain what a “right of way” is and how it may impact you. A right of way is the land we use to construct, maintain, replace or repair underground and overhead power lines. Rights of way enable the co-op to provide clearance from trees and other obstructions that could hinder the power line installation, maintenance or operation. ROW areas are typically on public lands or located near a business or home. Regardless, MJM must be able to maintain the power lines above and below the ROW. The overall goal of our vegetation management program is to provide reliable power to our members while maintaining the beauty of our community. Proactive vegetation management benefits co-op members in three tangible ways.

Safety

First and foremost, we care about our members and put their safety and that of our lineworkers above all else. Overgrown vegetation and trees pose a risk to power lines. For example, if trees are touching power lines in our members’ yards, they can pose grave danger to families. If children can access those trees, they can potentially climb into a danger zone. Electricity can arc, or jump, from a power line to a nearby conductor like a tree. A proactive approach also diminishes the chances of fallen branches or trees during severe weather events that make it more complicated and dangerous for lineworkers to restore power.

Reliability

Of course, one of the biggest benefits of a smart vegetation management program is reliability. Strategic tree trimming reduces the frequency of downed lines causing



power outages. Generally speaking, healthy trees don’t fall on power lines, and clear lines don’t cause problems. Proactive trimming and pruning keeps lines clear to promote reliability.

We also use data and the technology to maximize the efficiency of our operation. This includes our vegetation management plan. All herbicides used are registered with the Illinois Environmental Protective Agency. Additionally, professional applicators will take special care to assure safe handling and precise application.

Affordability

As you know, MJM is a not-for-profit cooperative, and that means we strive to keep our costs in check in order to keep our rates affordable. This extends to our approach to vegetation management. If trees grow too close to power lines, the potential for expensive repairs also increases. Effective tree trimming and other vegetation management efforts keep costs down for everyone.

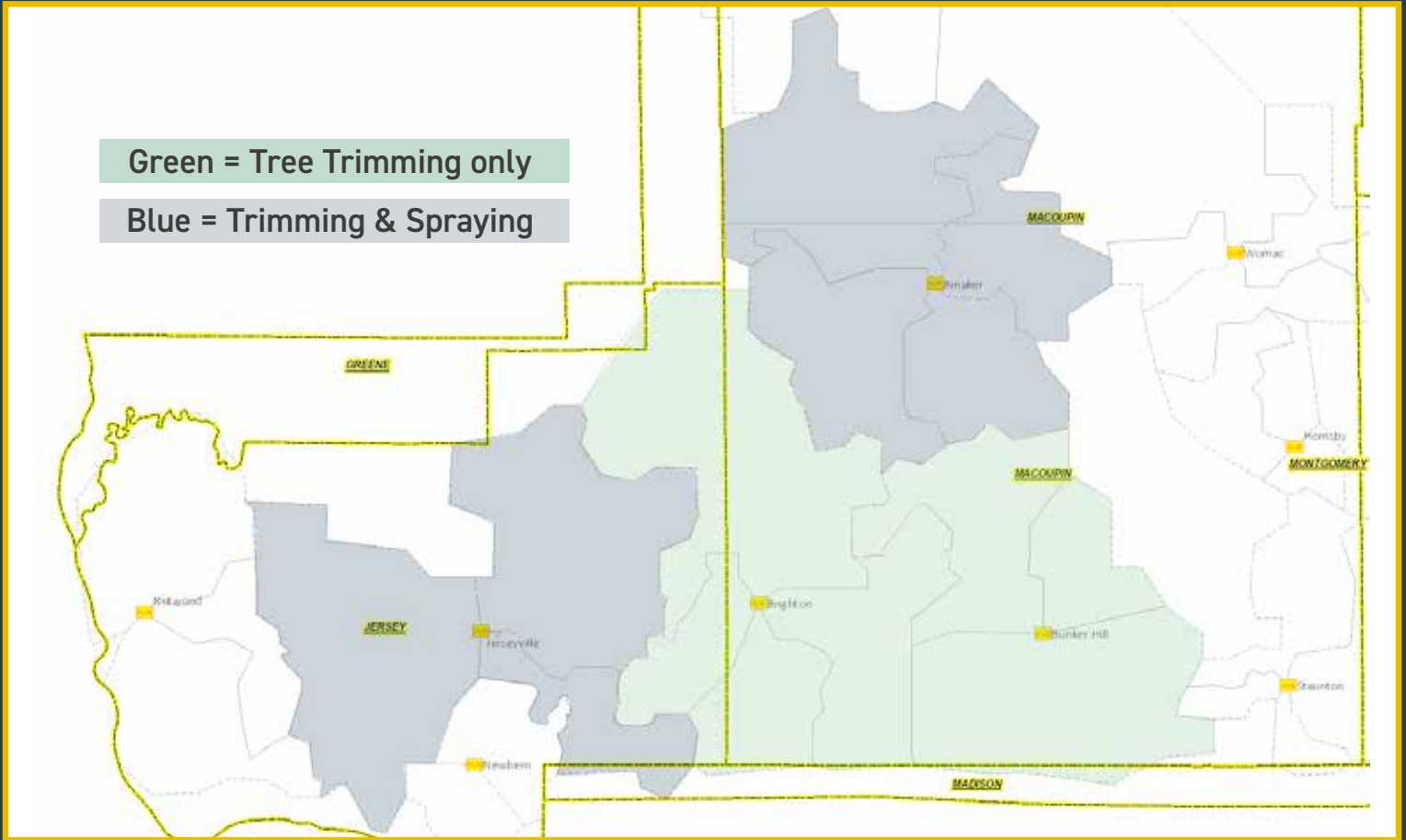
Our community is a special place. We appreciate the beauty trees afford, but we also know our community depends on us to provide reliable energy. Through vegetation management, we are better able to keep the power lines clear, prepare for future weather events and secure the reliability of the grid.

Anne Prince writes on consumer and cooperative affairs for the National Rural Electric Cooperative Association, the national trade association representing more than 900 local electric cooperatives. From growing suburbs to remote farming communities, electric co-ops serve as engines of economic development for 42 million Americans across 56% of the nation’s landscape.



2023 VEGETATION MANAGEMENT SCHEDULE

TREE TRIMMING & SPRAYING



TREE TRIMMING

MJM's Forestry Crew is working on the Rinker Sub area and plan go to Bunker Hill Sub area next for trimming & clearing. Contracted forestry crews will be working on the Jerseyville Sub area and then the Brighton Sub area next.

SPRAYING

After ROW (right-of-way) clearing and tree trimming, crews will be out spraying in the Jersey and Brighton substation service areas. As mentioned in the article on page 6, all herbicides used are registered with the Illinois Environmental Protective Agency. Additionally, professional applicators will take special care to assure safe handling and precise application.

The most common cause of power outages is related to trees that grow into power lines or trees that fall into the lines. The goal of MJM's Vegetation Management Program is to provide safe and reliable electric service while respecting the environment. Typically the year following brush removal we will do an herbicide application. This allows for a transition of tall overgrown brush and trees to become a diverse environment of low growing grass and plants.

If vegetation or pole problems should arise in the areas not listed, please contact MJM Operations for assistance.

Office: 217-707-6156



MEMBER TRADING POST



FOR SALE: 8 Lab Pups out of hunting-trained stock. Registered AKC. 7 are yellow (4 male, 3 female), 1 black (female). Ready March 1st - \$500
Call Mike: 217-825-6905, or
Eric: 217-851-5769

FOR SALE: Aged firewood \$100 a truckload, stacked and delivered free in a 20 mile radius from Mt Olive, farther distances call for delivery price. Enough wood to fill a 8' x 4' rack.
Call: 217-246-2545

FOR SALE: Bush Hog 2515 flex wing rotary cutter, 15ft - \$6800.
2002 John Deere 6420 with 640 loader, 90 HP, 4-wheel drive, 4450hrs - \$62,900.
2008 Grooming mower GM1060R, 60in, 3pt hitch - \$1200
Call: 217-370-2679

FOR SALE: Season Fire Wood, 6ft pickup loads - \$100 or call for delivery price:
Call Leroy @ 618-972-4658

FOR SALE: 2019 - 7' 3pt. flail mower. New, never used. Can pull directly behind tractor or can be offset 12". Can deliver. \$3,000.00. Call: 618-600-3116

WANTING TO BUY: Old bottles and advertising from Litchfield, IL. Call: 618-402-4420

FOR SALE: New tachometer fits IH 656,666 and hydro 100, 554,826,999,1026,1066 \$75.00
Call or text 217 415-8893

FREE: A free-standing basketball hoop: Base stand, metal pole, backboard, and hoop.
Call: 618-836-7545