

# ALONG THE LINES



DEDICATED TO PROVIDING RELIABLE SERVICE FOR OUR MEMBERS.

**JUNE 2023**

**VOL.16, NO. 6**

## WEEKEND PROJECTS

Energy-saving home projects. p.5

## SUMMER SAFETY

Safely have fun in the sun this summer p.6

## ELECTRIC VEHICLES

EV owners, there is a new Power Moves program. p.10

## JUNE CALENDAR

- 2nd: National Donut Day
- 3rd-11th: Fishing & Boating Week
- 4th: National Cancer Survivor Day
- 4th: National Cheese Day
- 6th: D-Day
- 8th: **MJM'S 84TH ANNUAL MEETING**
- 14th: Flag Day
- 14th: U.S. Army Birthday
- 18th: Father's Day
- 19th: Juneteenth
- 21st: First Day of Summer
- 29th: International Fishermen's Day

## UPCOMING

July 4th: **OFFICE CLOSED**

### HOLIDAYS OBSERVED:

New Year's Day, Good Friday, Memorial Day, Independence Day, Labor Day, Veterans Day, Thanksgiving Day, the day following Thanksgiving, and Christmas Day.



OFFICE: 217-707-6156  
FAX: 217-854-3918

18300 SHIPMAN ROAD (PO BOX 80)  
CARLINVILLE, IL 62626

WWW.MJMEC.COOP





# CONGRATULATIONS ON DIRECTOR GOLD!

MJM BOARD CHAIRMAN: **W. KAY SCHULTZ**

District One Board Director & Board Chairman, W.Kay Schultz received his Director Gold Certificate renewed by the National Rural Electric Cooperatives Association (NRECA) at the March 2023 Board meeting.

To earn the Director Gold Certificate, Directors must first earn NRECA's Credentialed Cooperative Director Certificate and Board Leadership Certificate (BLC) plus three additional credits from BLC courses. The Director Gold Certificate program is geared toward Directors who are committed to continuing their education. By earning the Director Gold Certificate, Directors are taking initiative to be up to date on all Co-op matters and the best way to serve MJM's Members.



L to R: Director Schultz, CEO/President Heyen

## OPERATION ROUND UP

SHIPMAN FIREFIGHTERS ASSOCIATION RECEIVES FUNDING



Pictured above with the ORU check: (back row, left to right) Jason Cox, Chris Allen, Kyle Christopher, Justin Paul (front row, left to right) Josh Corby, Brittanny Cox, Debbie Christopher, Mike Christopher.

If you happen to drive through the town of Shipman, IL, you might notice a new LED community announcement sign in front of the volunteer Fire Department headquarters. The Shipman Firefighters Association applied and was awarded an Operation Round Up Grant in the first application cycle of 2023. This new, full-color LED outdoor sign will provide the community of Shipman and travelers on Route 16, information about local events and important notices.

For more information on Operation Round Up and to see a list of all the local projects and organizations that have benefited from the program, go to: <https://mjmec.coop/operation-round>

# ALONG THE LINES

by MJM Electric Cooperative  
www.mjmec.coop

18300 Shipman Road (PO Box 80)  
Carlinville, IL 62626

Office: 1-217-707-6156

Pay by Phone: 1-855-313-6314

**Office Hours:**  
Monday - Friday 7:30 a.m.- 4:00 p.m.

## HOW TO REPORT AN OUTAGE:

Call 217-707-6156 or use your **SmartHub app**.

- When you report an outage, give your **name** and **location number**.
- Before calling, check your fuses or circuit breakers.
- Check with your neighbors. Call to report hazardous conditions.

**Please do not report outages on Facebook/Social Media.**

## BOARD OF DIRECTORS

**CHAIRMAN:** W. Kay Schultz..... Godfrey  
**VICE CHAIRMAN:** Charles Huebener..... Brighton  
**SECRETARY:** Marcie Tonsor..... Jerseyville  
**TREASURER:** Robert Moore..... Medora  
 Robert Lehmann..... Girard  
 Tyler Heyen..... Raymond  
 Dwayne Milner..... Piasa  
 James R. Niemann..... Litchfield  
 Todd Stewart..... Nokomis

## STAFF

Joe Heyen.....President/CEO  
 Jeremy Pattillo.....Director of Finance and Accounting  
 Jennifer Peterson.....Executive Administrator  
 Matt Eisenmenger.....Director of Operations  
 Bob Brandon.....Director of Engineering

## EDITOR

Eric Cooper.....Communications & Member Services Coordinator

MJM Along the Lines (USPS 854-620) is published monthly for \$4.75 per year, per member by MJM Electric Cooperative, Inc., P.O. Box 80, Carlinville, Illinois 62626. Second-class postage paid at Carlinville, IL. POSTMASTER: Send Address changes to MJM Along the Lines, P.O. Box 80, Carlinville, IL 62626.



A Touchstone Energy® Cooperative

# IN THIS ISSUE

- 04 **Welcomes and Congratulations**  
New to MJM and achievements by current employees.
- 05 **Weekend Warrior Projects**  
Great energy-saving projects for your home.
- 06 **Electrical Safety**  
Tips on keeping safe while having fun in the sun!
- 10 **Electric Vehicles & Charging**  
Introducing "Power Moves GO!"

PLEASE RECYCLE



- **PAY ONLINE**
- **TRACK YOUR USAGE**
- **REPORT OUTAGES**
- **GET NOTIFICATIONS**

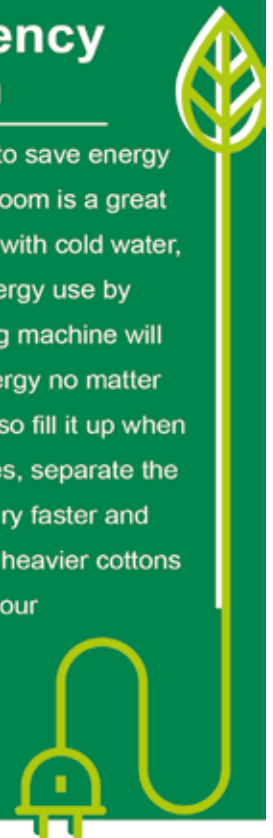
SCAN THE QR CODE ABOVE  
WITH YOUR SMARTPHONE, OR GO TO:

[HTTPS://MJMEC.COOP/SMARTHUB-HELP](https://mjmec.coop/smarthub-help)

## Energy Efficiency Tip of the Month

Looking for additional ways to save energy this summer? Your laundry room is a great place to start. Wash clothes with cold water, which can cut one load's energy use by more than half. Your washing machine will use the same amount of energy no matter the size of the clothes load, so fill it up when you can. When drying clothes, separate the heavier cottons. Loads will dry faster and more evenly if you separate heavier cottons like linens and towels from your lightweight clothing.

Source: Dept. of Energy





# CONGRATULATIONS

## 2023 YOUTH TOUR DELIGATE

### JARED URY



Jared Ury (L) with Senator Steve McClure (C), and MJM's Eric Cooper (R) at Youth Day in Springfield, IL on March 29th, 2023.

Jared Ury from Staunton, IL is representing MJM Electric Cooperative at the 2023 Youth Tour in Washington, DC June 16-22. During the weeklong trip, he will meet his elected officials, see historic sites, learn firsthand how cooperatives work and gain valuable leadership skills.

Youth Day's return was a big success: For the first time since 2019, the Illinois Electric and Telephone Cooperatives Youth Day (March 29th, 2023) returned following a three-year hiatus due to the COVID-19 pandemic. Nearly 200 students representing 22 Illinois electric and telephone cooperatives had the opportunity to visit the State Capitol, view state government in action and question their legislators on key issues.

For more information on Youth Day and Youth Tour for **2024**, please visit our website and look for updates on our social media pages and this Along the Lines Newsletter. Open to sophomores and juniors, and registration typically is open November - January. <https://mjmec.coop/youth-day-youth-tour>



# CONGRATULATIONS

## DAVID MCCOY

### FORESTRY FOREMAN

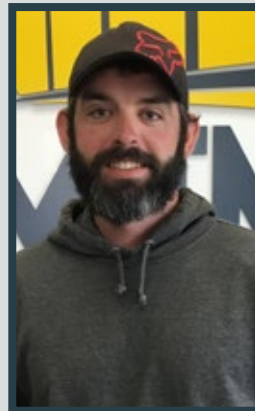


MJM would like to congratulate David McCoy on his promotion to Forestry Foreman!

The MJM Forestry Department has grown over the past year, and we now have the numbers required to successfully attend to ROW clearing and spraying for our entire service area without hiring forestry contractors.

David will be overseeing the main spraying operations of the forestry division and forestry foreman Larry Cochran will be overseeing the trimming operations. We are excited to see what this new fully staffed forestry team can do!

# MJM WELCOMES A NEW MEMBER OF THE FORESTRY CREW

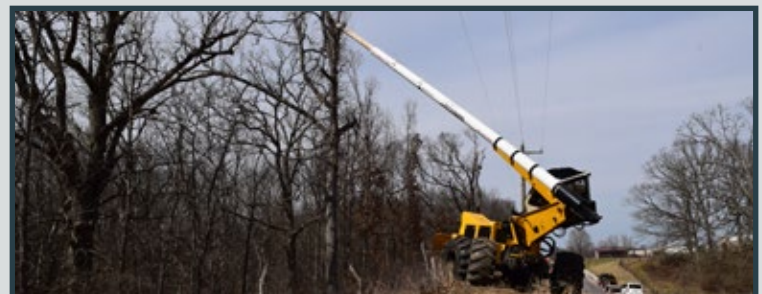


Zach Porter

MJM would like to extend a warm welcome to the newest addition to our Forestry Crew:

Zach Porter of Jerseyville is our new Forestry Journeymen. He began working at MJM in mid-March 2023, and Zach brings years of knowledge and experience in the tree service industry with him.

**Welcome to the MJM Cooperative team!**



# ENERGY-SAVING PROJECTS FOR THE WEEKEND WARRIOR

BY ABBY BERRY (NRECA)

Are you a weekend warrior? If you're considering home improvement upgrades that save energy and money, we've got a few project ideas for you--all of which can be completed in a day or less!

Here are three energy-saving projects that you can easily tackle whether you're a weekend warrior pro or a DIY dabbler.

## Get smart about home cooling and heating.

Cooling and heating your home typically account for a large portion of energy bills. Smart thermostats can help keep your cooling and heating costs in check, with ENERGY STAR®-certified models saving about 8% on annual energy costs.

Now that smart thermostats are more affordable (as little as \$70!), this simple upgrade makes for a fun, efficient weekend project. Smart thermostats offer a variety of bells and whistles, but the average model will allow you to set custom temperature schedules, adjust the settings from anywhere (from your phone), and over time, learn your cooling and heating preferences.

Your new smart thermostat will come with step-by-step instructions, but this project typically involves shutting off your HVAC at the breaker panel, disconnecting/removing the old thermostat, installing the new smart thermostat and connecting it to your home Wi-Fi.

Play it safe: remember to carefully read the installation instructions before you get started.

## Go green and boost your greenery with a rain barrel.

If you've got a green thumb, you already know that rainwater is the best water for your outdoor plants. Rainwater is free of minerals, salts and treatment chemicals found in tap water or groundwater. It also contains helpful macronutrients to foster healthy plant growth.

Installing a rain barrel is an easy way to harvest large amounts of rainwater and reduce home water use--it's a win-win. According to the Environmental Protection Agency, one rain barrel can save a homeowner 1,300 gallons of water annually.

Most residential rain barrels range in size from 50 to 90 gallons, so the size you purchase will depend on your watering needs.

The simplest way to install a rain barrel is positioning a plastic or wooden barrel directly under your gutter downspout. Basic piping may be required, but this is an



easy way to harvest rainwater, and the barrel won't take up much space. Consider a cover for the top of your rain barrel to keep insects and small debris out of your harvested water.

## Create fresh savings with a DIY clothesline.

If you have enough outdoor space available, installing a clothesline is a great way to save energy. Not only will you save on dryer costs--in the summer, you can also save on cooling costs since unwanted heat from the clothes dryer won't be added to your home (which makes your air conditioner work harder). Additionally, air drying is much gentler on fabrics and will keep your clothes and linens looking fresh longer.

You can create your own clothesline with two T-posts, wire and hook-and-eye turnbuckles. Depending on your soil, you may need a small amount of Quikrete to set the posts. Another option is installing the line between two trees. A typical load of laundry requires about 35 feet of line, so keep this in mind as you're determining the best location.

If an outdoor clothesline isn't an option, no sweat! You can easily create an indoor drying rack that folds to save space. Home improvement websites like [thespruce.com](https://thespruce.com) and [hgvtv.com](https://hgvtv.com) offer step-by-step tutorials for a variety of indoor clothes racks.

These are just a few simple ideas to help you save energy and money. So, get out there, roll up those sleeves and tackle a few projects.

Check out MJM's website for additional energy-saving ideas and tips. <https://mjmec.coop/saving-energy-101>

Abby Berry writes on consumer and cooperative affairs for the National Rural Electric Cooperative Association, the national trade association representing more than 900 local electric cooperatives. From growing suburbs to remote farming communities, electric co-ops serve as engines of economic development for 42 million Americans across 56% of the nation's landscape.



# PREVENT DEADLY SHOCKS—CHECK YOUR BOATS AND DOCKS

BY: [SAFELECTRICITY.ORG](http://SAFELECTRICITY.ORG)

If you own a boat and/or a dock, Safe Electricity reminds you to take steps to prevent deadly shocks, also known as Electric Shock Drowning (ESD).

Past accidents involving stray electricity and water include:

- A 26-year-old woman who was swimming with family in the Lake of the Ozarks was electrocuted when she touched an energized dock ladder.
- Also at Lake of the Ozarks, a 13-year-old girl and her 8-year-old brother received fatal electrical shocks while swimming near a private dock; officials cited an improperly grounded circuit as the cause.
- In Tennessee, two boys, ages 10 and 11, lost their lives as they were shocked while swimming between houseboats on Cherokee Lake, a result of electricity entering the water apparently through frayed wires beneath the boat.

An important step in helping prevent such tragedies is to ensure proper installation and maintenance of electrical equipment on docks and on boats. Take the time to inspect all electrical systems on or near the water.

Safe Electricity, with the American Boat and Yacht Council and International Brotherhood of Electrical Workers/National Electrical Contractors Association, recommends adhering to these steps to improve water recreation safety and accident prevention:

- All electrical installations should be performed by a professional electrical contractor familiar with marine codes and standards, and inspected at least once a year.
- Docks should have ground fault circuit interrupter (GFCI) breakers on the circuits feeding electricity to the dock.
- The metal frame of docks should be bonded to connect all metal parts to the alternating current (AC) safety ground at the power source. That will ensure any part of the metal dock that becomes energized because of electrical malfunction will trip the circuit breaker.
- Neighboring docks can also present a shock hazard. Make your neighbors aware of the need for safety inspections and maintenance. Marinas should comply with NFPA and NEC codes.



**Here are a few additional tips to remember for your boat's electrical system, particularly those with AC systems:**

- Regardless of the size of boat, maintenance of the electrical system should be done by a professional familiar with marine electrical codes.
- Have your boat's electrical system checked at least once a year. Boats should also be checked when something is added to or removed from their systems.
- Boats with AC systems should have isolation transformers or equipment leakage circuit interrupter (ELCI) protection, comply with ABYC standards, and be serviced by an ABYC Certified® Technician.

**If you are in the water and feel electric current:**

- Shout to let others know.
- Tuck your legs up to make yourself smaller.
- Try to go away from anything that could be energized.
- Do not head to boat or dock ladders to get out.

**If you are on the dock or shore when a swimmer feels electrical current:**

- Do not jump in.
- Throw them a flotation device.
- Unplug or turn off the source of electricity as quickly as possible.
- Then call for help.



# KEEP YOUR FAMILY SAFE DURING A FLOOD

BY: SAFEELECTRICITY.ORG

Heavy rains often cause flooding in lowland areas, homes, and basements. The prospect of an electrical accident is probably not top of mind when you're dealing with a flooded basement, room, or even outdoors. However, it is the first thing you should think of before you step foot in the water.

Safe Electricity reminds everyone to be alert to electrical equipment that could be energized and in contact with water, with other potential hazards that create a serious danger of electrocution. Cleaning up and using water-damaged appliances carry safety risks. Safe Electricity urges parents and other caregivers to make sure children are also aware of these hazards.

Safety measures to remember include:

- **Never step into a flooded basement or other room if water may be in contact with electrical outlets, appliances, or cords.**
- **Never attempt to turn off power at the breaker box if you must stand in water to do so. If you can't reach your breaker box safely, call your electric utility to shut off power at the meter.**
- **Never use electric appliances or touch electric wires, switches, or fuses when you're wet or when you're standing in water.**
- **Keep electric tools and equipment at least 10 feet away from wet surfaces. Do not use electric yard tools if it's raining or the ground is wet.**
- **If an electrical appliance has been in contact with water, have a professional check it out before it is used. It may need to be repaired or replaced.**

A good safety measure is to have ground fault circuit interrupters (GFCIs) professionally installed on outlets. These safety devices can cut off power instantly if there's a problem. GFCIs are recommended for outdoor outlets and outlets near wet areas of the home, such as kitchen, bath, and laundry room.

# CONVENIENCE WITH MEMBERS IN MIND

## PAYMENTS MADE EASY



MJM offers a number of convenient payment options to benefit Members. The most popular used payment method at MJM is to pay electronically. These types of payments can be made by logging into our SmartHub app, visiting MJM's website ([www.mjmec.coop](http://www.mjmec.coop)), calling our secure payment line (1-855-313-6314), or by enrolling in autopay, which is a recurring monthly process that occurs on the due date each month using a credit/debit card or checking account for payment.

At our headquarters in Carlinville, you may pay inside our lobby, use our drive thru window, or use our drop box (also located in our drive thru). Only one in four MJM Members are still utilizing the option to mail in a paper check to PO Box 80, Carlinville, IL 62626. MJM also offers the option to make cash payments at participating retail stores. To do this, you must login to SmartHub and follow the instructions on the Pay by Cash screen. Please note, there is a \$1.50 convenience fee which is required by the processing company, not MJM.

We encourage Members to use the electronic check payment method as this option is less expensive to the Cooperative as compared to the fees related to credit and debit card transactions. Checking account payments may be processed as a one-time payment or recurring monthly auto payments.

As a reminder, monthly billing statements are typically available on SmartHub by the 2nd of each month and paper statements are delivered to the US Postal Service by the 3rd. **The payment due date is the 15th, however late fees are not applied until after 4pm on the 22nd.**

If you have any questions, please reach out to the office or email MJM at [info@mjmec.coop](mailto:info@mjmec.coop).



# Stove Types

Residential stoves are pretty simple, no-nonsense appliances, but they've been making headlines lately with a public debate over gas vs. electric models. The three primary types of cooktops—gas, electric and induction—are all adept at their primary purpose: delivering heat to pots or pans. They also have unique pluses and minuses in how they're constructed, how they work and the side effects they may create.

## Gas

### How it works:

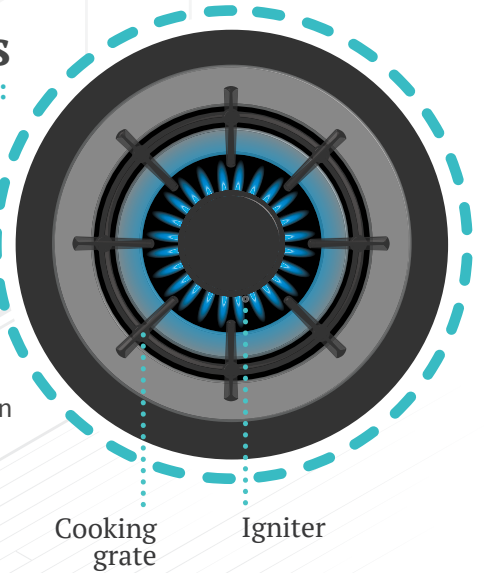
Flammable gas is ignited and transfers heat to cookware.

### Pluses

- High heat output
- Works even when the power is out

### Minuses

- Harder to clean
- May contribute to indoor air pollution



Cooking grate

Igniter

## Electric

### How it works:

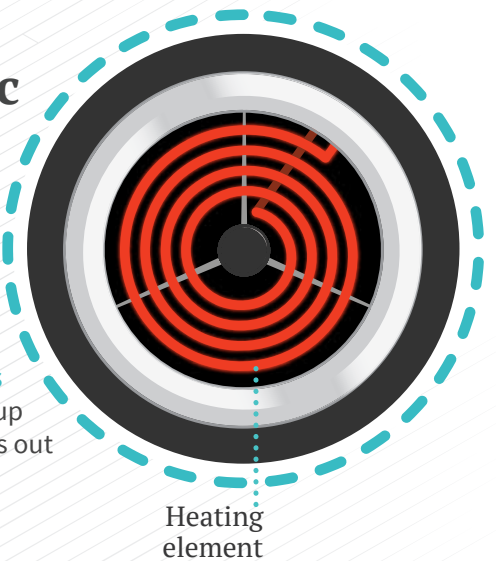
Electricity is run through resistive metal coils, which heat up based on the amount of current.

### Pluses

- Less ambient heat released
- Less expensive to buy and run

### Minuses

- Can be slow to heat up
- Won't work when power is out



Heating element

## Induction

### How it works:

A metal coil generates an electromagnetic current that excites particles in specialized steel or iron cookware.

### Pluses

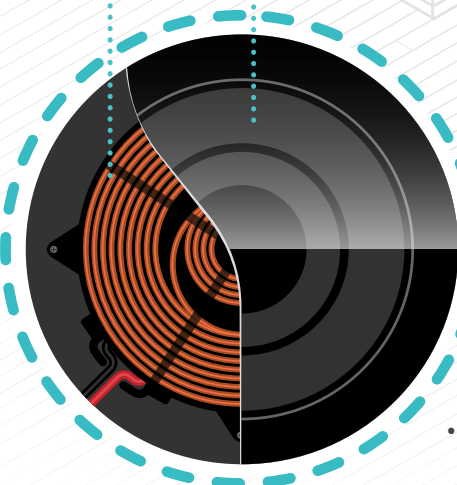
- Safer – no residual heat
- More precise temperature control

### Minuses

- Won't work if power is out
- More expensive to buy

Copper induction coil

Ceramic cooktop





# PREPARING TO SERVE YOU BETTER

BY ANNE PRINCE (NRECA)

Providing reliable power to you is and will always be top priority for MJM Electric Cooperative. These days, power reliability seems to be making news now more than ever. As the energy industry continues to transition and more segments of the economy are becoming electrified, such as vehicles, machinery and even lawn equipment, additional pressures are being placed on our nation's electric grid.

With summer storm season upon us, I thought it would be a good time to tell you about a few measures we're taking to ensure you continue receiving the reliable power you depend on and deserve.

Let me be the first to say I love trees and the charm they add to our communities, and I know you do too. While trees provide shade and add beauty to our area, you may be surprised to learn that overgrown vegetation accounts for about half of all power outages.

That's why we strive to keep the co-op's power lines clear in right-of-way (ROW) areas. A ROW area is the land a co-op uses to construct, maintain, replace or repair underground and overhead power lines. This ROW enables MJM to provide clearance from trees and other obstructions that could hinder distribution power lines. The overall goal of our vegetation management strategy is to provide reliable power to our members while maintaining the beauty of our area.

## MODERNIZING VEGETATION MANAGEMENT

Generally speaking, healthy trees don't fall on power lines, and clear lines don't cause problems. Proactive trimming and pruning keep lines clear to improve power reliability. However, traditional vegetation management is costly and time consuming. It entails on-the-ground, labor-intensive efforts involving dozens of workers assessing vegetation and overseeing the quality and completion of contractor work. Although this approach has worked for decades, advances and improvements in technology have allowed us to reduce our costs and improve efficiency.

Drones are able to capture images of power lines and vegetation so we can accurately monitor the health of trees and pinpoint problems along the lines. Drone data is incorporated into our routine maintenance and inspections.



## PLANNED OUTAGES IMPROVE RELIABILITY

Although it may seem counterintuitive, we also maintain power reliability through planned, controlled outages. By carefully cutting power to one part of our local area for a few hours, MJM crews can perform system repairs and upgrades, which ultimately improve electric service. Planned outages can also be used to balance energy demand, but only in rare circumstances. Rest assured, we will always attempt to notify you in advance of a planned outage, so make sure we have your correct contact information on file to receive the latest emails, calls, or text messages.

Vegetation management is an essential tool in ensuring power reliability and minimizing the risk of outages. As advancements become more accessible and costs drop, we anticipate using additional technologies to ensure a consistent energy supply while managing the environment.

Lastly, I encourage you to follow MJM on social media so you can learn about the latest co-op updates.

Anne Prince writes on consumer and cooperative affairs for the National Rural Electric Cooperative Association, the national trade association representing more than 900 local electric cooperatives. From growing suburbs to remote farming communities, electric co-ops serve as engines of economic development for 42 million Americans across 56% of the nation's landscape.

# CALLING ALL ELECTRIC VEHICLE OWNERS!

If you are an MJM Electric Cooperative member and own an electric vehicle, we have a new program called **Power Moves GO** which is offered through our power provider, Wabash Valley Power Alliance in partnership with Rolling Energy Resources (RER). Participants will receive a \$50 e-gift card as an enrollment incentive as well as monthly *My Charge* reports that will help explain charging behaviors and fuel savings.

Visit [www.mjmec.coop/evs](http://www.mjmec.coop/evs) for more info and to verify if your vehicle qualifies for the program. When you're ready, email your request for program access to [ev@mjmec.coop](mailto:ev@mjmec.coop) or contact the billing department.

*\* EV must be subscribed to the EV's 'Connectivity package' which allows the EV to connect to the internet and be on this eligibility list from RER.*



[www.mjmec.coop/evs](http://www.mjmec.coop/evs)

## MJM'S EV CHARGING STATION INFO AND SPECS

This electric vehicle charging station is a Level 2 commercial charging station capable of charging 2 vehicles at once. The cost to charge is \$0.20 / kWh and it might take 3-5 hours to add 40 miles of range to a vehicle. The MJM ChargePoint Station is the only listed public use EV charging station within 30 miles.

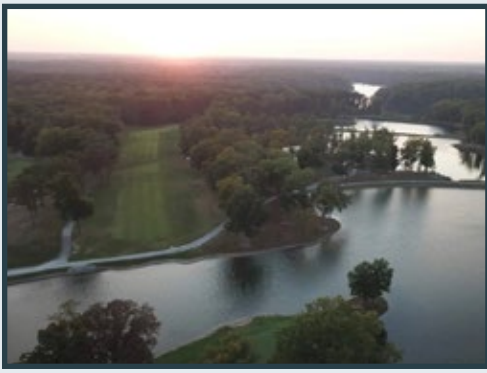
### There are three ways to start a charging session:

- Tap to charge. With the ChargePoint app installed, you can start a charging session by holding your phone over the reader symbol on the station. Make sure you have the app and are signed into your account.
  - \* *iPhone: In the ChargePoint app, go to Menu, select Account and then Manage Cards. Pick "set it up," add your ChargePoint pass to Apple Wallet and tap your phone on the station to charge.*
  - \* *Android: Enable NFC, turn your phone screen on and tap your phone on the station to charge.*
- Start charging from the app. Choose the station and click the 'Start Charge' button.
- Use your ChargePoint card. Just tap your activated ChargePoint card (make sure to activate it) on the card reader symbol on the station.

If you need help, call driver support at **1-888-758-4389**.







# FORE!

If Golf is closer to your idea of Summer Fun, MJM lines power golf courses as well:

## TIMBER LAKES GOLF COURSE

(pictured above) located in Staunton, IL  
<https://www.timberlakesgc.com/>  
(618) 635-4653  
3120 Forest Lake Lane  
Staunton, IL 62088

## INDIAN SPRINGS GOLF COURSE

located in Fillmore, IL  
<https://indianspringsgolf.net/>  
(217) 538-2392  
21347 Illinois Rte 185  
Fillmore, IL 62032

## JUNE IS ALSO NATIONAL PET ADOPTION MONTH!

YOU CAN ADOPT A NEW FAMILY PET AT ONE OF THESE LOCATIONS ON MJM LINES!

### RIVERBEND HUMANE SOCIETY

NO-KILL ANIMAL SHELTER

913 W COUNTY RD,  
JERSEYVILLE, IL 62052  
(618) 498-7299

### MONTGOMERY COUNTY ANIMAL CONTROL

11252 NORTH 9TH AVENUE,  
HILLSBORO, IL 62049  
(217) 532-3334

# ENJOY FUN IN THE SUN WITH BUSINESSES ON MJM LINES

Summer is finally here this month! If you are looking for places to take the family, go on a date night, or just a nice and relaxing evening, check out these great summer fun **locations on MJM lines.**



20995 Eckert Orchard Rd, Grafton, IL 62037  
[eckerts.com/location/grafon-farm](http://eckerts.com/location/grafon-farm)

Opening at the end of June, Eckert's Grafton Farm has a wide range of family fun activities and events throughout the year. You will find apples, pumpkins, peaches, blackberries, the Kids' Corral, Miniature Golf, the AppleFest, the Grafton Market, and Concessions.

## WILD PICKINS WINERY

14223 Rt. 111, Chesterfield, IL 62630  
[WILDPICKINSWINERY.COM](http://WILDPICKINSWINERY.COM)

## GRAFTON WINERY AT THE VINEYARDS

21028 Eckert Orchard Rd, Grafton, IL 62037  
[THEGRAFTONWINERY.COM/VINEYARDS](http://THEGRAFTONWINERY.COM/VINEYARDS)

## VIXEN HILL WINERY

7331 Palmyra Road, Palmyra, IL 62674  
[VIXENHILLWINERY.COM](http://VIXENHILLWINERY.COM)



Each Winery listed has a great wine selection, delicious food, variety of events hosted, live music, and an inviting atmosphere.

Check them out this summer!



## BEAVER DAM STATE PARK

14548 Beaver Dam Lane, Plainview IL 62685

## LAZY DAYS CAMPGROUND

22756 Whitepark Lane, Litchfield IL 62056

## CAMP POTAWATAMI

13112 Visitor Center Lane, Grafton IL 62037

*Don't forget to pick up your fishing license! (16yrs old +)*

For a listing and info on all Illinois State Parks and Campgrounds you can visit:  
**[dnr.illinois.gov](http://dnr.illinois.gov)**



## MEMBER TRADING POST

**FOR SALE:** 2000 Ford Tractor. In great, parade-ready condition, good tires, runs great. \$5000  
Call: 217-313-3839

**FOR SALE:** International Harvester 656 tractor, gas engine, Hydrostatic drive, IH wide front end, 2-point hitch, 2 hydraulic valves, serial number 37284, looks good, ready for parades. Also on the tractor is a Farmhand 228 loader with a hydraulic bucket. Also included is a large hay bale attachment. Ready for other loader work. If interested, I can send pictures. The price for the package is \$13,750.00.  
Call: 618-806-5746

**FOR SALE:** 1965 Case Tractor, Diesel motor, 3pt hitch, good condition, good tires, 4 speed transmission, power steering, ready to work. \$3800  
Call: 618-372-8411

**FOR SALE:** 5 ft. Landpride BB1560 Box Blade sold by Hargraves in Jerseyville. Good shape \$600.00 or trade for large anvil. Call 618-498-3833.

**Have an Electric Vehicle?**  
Let MJM know if you are a member that owns an EV, this will help future planning and development of infrastructure upgrades as more and more electric vehicles begin charging on MJM lines.

Contact: [info@mjmec.coop](mailto:info@mjmec.coop)  
or call 217-707-6156

*Your Ad Here:  
See details below on  
how to get your Ad  
placed in the Along The  
Lines Newsletter!*