


# ALONG THE LINES



A Touchstone Energy® Cooperative 

## FEBRUARY 2023

VOL.16, NO. 2

### POWERMoves REBATES

Residential rebates for  
2023. p.4

### POWER RESTORATION

Process and info p.5

### 2023 RATE INFO

Article & details on p.6  
List of 2023 rates p.7

## FEBRUARY CALENDAR

Feb. 2nd: Groundhog Day

Feb. 3rd: National Bubblegum Day

Feb. 9th: National Pizza Day

Feb. 12th: Superbowl Sunday

Feb. 14th: Valentine's Day

Feb. 18-25: National FFA Week

## UPCOMING

Apr. 7th: **Office Closed - Good Friday**

Jun. 8th: **2023 ANNUAL MEETING**

### Holidays observed:

New Year's Day, Good Friday, Memorial Day, Independence Day, Labor Day, Veterans Day, Thanksgiving Day, day following Thanksgiving and Christmas Day.



OFFICE: 217-707-6156  
FAX: 217-854-3918

18300 SHIPMAN ROAD (PO BOX 80)  
CARLINVILLE, IL 62626

WWW.MJMEC.COOP





# SAVE THE DATE

06

08

23

## 2023 ANNUAL MEETING



**MJM**  
ELECTRIC COOPERATIVE

A Shawnee Energy Cooperative

18300 SHIPMAN RD.  
CARLINVILLE, IL 62626

- LIVE MUSIC!
- PORK CHOP SANDWICH SUPPER!
- **\$15 BILL CREDIT** FOR ATTENDING!
- BE ENTERED IN PRIZE DRAWINGS!
- GRAND PRIZE: **\$350 BILL CREDIT!**

**We hope to see you in June!**



*Pork Producers*



*Patty Ames*



### SMARTHUB FEATURES:

- PAY ONLINE
- TRACK YOUR USAGE
- REPORT OUTAGES
- GET NOTIFICATIONS

[HTTPS://MJMEC.COOP/SMARTHUB-HELP](https://mjmec.coop/smarthub-help)



## 5 Ways to Save During Winter

Winter weather typically means increased energy use at home. Keep your bills in check with these tips to save energy—and money!

**Mind the thermostat.** If you have a traditional heating and cooling system, set the thermostat to 68 degrees or lower. Consider a smart or programmable thermostat for additional savings.

**Get cozy.** Add layers of clothing for additional warmth, and snuggle up under your favorite heavyweight blanket.

**Don't block the heat.** If your air vents or heating elements (like radiators) are blocked by furniture or rugs, your home isn't being adequately heated.

**Take advantage of sunlight.** Open window coverings during the day to let natural sunlight in to warm your home. Close them at night to block the chilly night air.

**Block air leaks.** Seal windows and exterior doors with caulk and weather stripping to improve indoor comfort and decrease the amount of energy used to heat your home.





**18300 Shipman Road (PO Box 80)  
Carlinville, IL 62626**

**Office:** 1-217-707-6156

**Pay by Phone:** 1-855-313-6314

**Office Hours:**

Monday – Friday 7:30 a.m.–4:00 p.m.

**Board of Directors**

- Chairman:** W. Kay Schultz.....Godfrey
- Vice Chairman:** Charles Huebener.....Brighton
- Secretary:** Marcie Tonsor..... Jerseyville
- Treasurer:** Robert Moore.....Medora
- Robert Lehmann.....Girard
- Tyler Heyen..... Raymond
- Dwayne Milner .....Piasa
- James R. Niemann .....Litchfield
- (Vacant) ..... (District 8)

**Staff**

- Joe Heyen .....President/CEO
- Jeremy Pattillo.....Director of Finance and Accounting
- Jennifer Peterson.....Executive Administrator
- Matt Eisenmenger.....Director of Operations
- Bob Brandon.....Director of Engineering

**Editor**

- Eric Cooper.....Communications &  
Member Services Coordinator

**How to report an outage:**

**Call 217-707-6156 or use your SmarHub app.**

- When you report an outage, give your name and location number.
- Before calling, check your fuses or circuit breakers.
- Check with your neighbors. Call to report hazardous conditions.

**Please do not report outages on Facebook/Social Media.**

MJM Along the Lines (USPS 854-620) is published monthly for \$3.00 per year by MJM Electric Cooperative, Inc., P.O. Box 80, Carlinville, Illinois 62626. Second-class postage paid at Carlinville, IL. POSTMASTER: Send Address changes to MJM Along the Lines, P.O. Box 80, Carlinville, IL 62626.

# IN THIS ISSUE

**04 2023 PowerMoves Rebates**

Residential rebates for 2023.

**05 Power Restoration**

How power is restored during an outage & safety tips.

**06 Operation Round Up**

Become a Trustee for this great cause.

**07 Rates for 2023**

Information on rate changes for 2023.

PLEASE RECYCLE



## Energy Efficiency Tip of the Month

Do you have a home office? Set equipment like printers and scanners to automatically switch to sleep or energy-saver mode when not in use. In addition to saving energy, the equipment will stay cooler, which will help extend its life.

Another way to save in the home office is to use energy efficient lamps for task lighting. Small lamps use less energy than whole-room lighting.





# POWER MOVES®

## 2023 RESIDENTIAL REBATE PROGRAM

<https://www.powermoves.com/rebates/residential/>

### Geothermal Heat Pump (with Electric Backup)

<ul style="list-style-type: none"> <li>▶ Water-to-air closed loop <math>\geq 17.1</math> EER / <math>\geq 3.6</math> COP</li> <li>▶ Water-to-air open loop <math>\geq 21.1</math> EER / <math>\geq 4.1</math> COP</li> <li>▶ Water-to-water closed loop <math>\geq 16.1</math> EER / <math>\geq 3.1</math> COP</li> <li>▶ Water-to-water open loop <math>\geq 20.1</math> EER / <math>\geq 3.5</math> COP</li> </ul>	<b>CLOSED LOOP, REPLACING:</b> <i>electric resistance, fossil fuel, air source heat pump, or into new construction geothermal</i>	\$2,000 \$250
	<b>OPEN LOOP, REPLACING:</b> <i>electric resistance, fossil fuel, air source heat pump, or into new construction geothermal</i>	\$1,000 \$250

### Air Source Heat Pump (Whole Home)

<ul style="list-style-type: none"> <li>▶ Electric Back-up</li> <li>▶ <math>\geq 15.2</math> SEER2</li> <li>▶ <math>\geq 7.6</math> HSPF2</li> <li>▶ <math>\geq 1.75</math> COP at 5° (Cold Climate ASHP only)*</li> <li>▶ Condenser and coil must be replaced and installed</li> </ul>	<b>REPLACING:</b> <i>Electric Resistance Heat</i> <i>Natural Gas, Propane, Fuel Oil Heat</i> <i>Air Source Heat Pump</i> <i>New Construction</i>	<b>COLD CLIMATE HEAT PUMP*</b> \$1500 \$1500 \$1500 \$1500	<b>NON-COLD HEAT PUMP</b> \$750 \$750 \$250 N/A
--	--	--	---

### Air Source Heat Pump (Partial Home)

<ul style="list-style-type: none"> <li>▶ Electric Back-up</li> <li>▶ <math>\geq 15.2</math> SEER2</li> <li>▶ <math>\geq 7.6</math> HSPF2</li> <li>▶ <math>\geq 1.75</math> COP at 5° (Cold Climate ASHP only)*</li> <li>▶ Condenser and coil must be replaced and installed as a matched set</li> </ul>	<b>REPLACING:</b> <i>Electric Resistance Heat</i> <i>Natural Gas, Propane, Fuel Oil Heat</i> <i>Air Source Heat Pump</i> <i>New Construction</i>	<b>COLD CLIMATE HEAT PUMP*</b> \$600 \$600 \$600 \$600	<b>NON-COLD HEAT PUMP</b> \$250 \$250 \$250 N/A
---	--	--	---

### Natural Gas, Propane, and Fuel Oil with Heat Pump - Split System (Ducted)

<ul style="list-style-type: none"> <li>▶ <math>\geq 15.2</math> SEER2</li> <li>▶ <math>\geq 7.6</math> HSPF2</li> <li>▶ <math>\geq 90</math> AFUE</li> <li>▶ Condenser and coil must be replaced and installed as a matched set</li> <li>▶ New system must heat and cool entire home</li> </ul>	<b>REPLACING ELECTRIC RESISTANCE:</b> <i>electric furnace, ceiling cable, baseboard</i>	\$500
	<b>REPLACING FOSSIL FUEL AND CENTRAL AIR CONDITIONING</b>	\$500
	<b>NEW CONSTRUCTION</b>	\$500

### Heat Pump Water Heater

<ul style="list-style-type: none"> <li>▶ Minimum UEF of 3.3</li> </ul>	<b>REPLACING ELECTRIC RESISTANCE TANK</b>	\$600
	<b>REPLACING NATURAL GAS OR PROPANE WATER HEATER</b>	\$600
	<b>NEW CONSTRUCTION</b>	\$600

### Variable Speed Pool Pump

<ul style="list-style-type: none"> <li>▶ ENERGY STAR®</li> </ul>	<b>REPLACING EXISTING SINGLE STAGE POOL PUMP</b>	\$250
--	--	-------

### Wi-Fi Thermostat

<ul style="list-style-type: none"> <li>▶ Approved Wi-Fi thermostats</li> </ul>	<b>REPLACING NON WI-FI THERMOSTAT WITH WI-FI THERMOSTAT</b>	\$45
--	---	------

### PURCHASE RECEIPTS REQUIRED FOR ALL REBATE APPLICATIONS.

AHRI Certificates required for all geothermal, air source heat pump, and heat pump water heater rebate applications.

Heat loss/heat gain calculations required for geothermal and air source heat pumps.

Failure to provide requested information may result in forfeiture of rebate.

All installations are subject to verification and/or inspection.

For full requirements, see applications.

**REBATE PROGRAM ENDS DEC. 31, 2023, AND IS SUBJECT TO CHANGE WITHOUT NOTICE.**

Visit [PowerMoves.com](https://www.powermoves.com) or call your local electric cooperative's Energy Advisor for more information.



# RESTORING POWER SAFELY AND EFFICIENTLY

We do our best to avoid them, but there's no way around it: power outages occasionally happen.

For most MJM members, outages are rare and only last a few hours. But when major storms, like February and June of 2022 impact our area, extended outages are unavoidable.

So, when the power goes out, how do MJM crews know where to start working? How do you know if your outage has been reported? We've got answers to these questions and more, and it all starts with a safe, efficient plan for power restoration.

When the lights go out and it's safe for our crews to begin the restoration process, they start by repairing power lines and equipment that will restore power to the greatest number of people in the shortest time possible.

This process typically begins with repairs to the larger main distribution lines that service a great number of homes and businesses. After those repairs are made, crews work on tap lines, which deliver power to transformers, either mounted on utility poles (for above-ground service) or placed on pads (for underground service). Finally, individual service lines that run between the transformer and the home are repaired.

We can't control the weather, but we can prepare for it. MJM keeps a supply of extra utility poles, transformers and other equipment on hand so we can quickly get to work in the event of an outage. When widespread outages occur, multiple crews will be out in the field simultaneously working

to repair damage at multiple locations. We also coordinate with nearby co-ops to bring in additional crews when necessary.

A proactive approach to maintenance helps minimize the chance of prolonged outages; this is why you see MJM crews periodically trimming trees and clearing vegetation near rights-of-way. We love trees too, but it only takes one overgrown limb to knock out power for an entire neighborhood. Trimming improves power reliability for our entire community. In addition to managing vegetation, we regularly inspect utility poles, power lines and other critical equipment to maintain a more reliable system.

If you experience a power outage, don't assume a neighbor reported it. It's best to report the outage yourself, and we make it easy to do. The quickest way to report an outage is through the SmartHub app or call in an outage at 217-707-6156.

If you have a medical condition that requires electrical equipment, please let us know, and always have a backup plan in place. This plan could include a portable generator, extra medical supplies or moving to an alternate location until power is restored. If you plan to use a generator for backup power, read all safety information and instructions before use.

Mother Nature can be unpredictable, but as a member of MJM, you can feel confident knowing we're standing by, ready to restore power as quickly and safely as possible.

<https://mjmec.coop/outage-center>

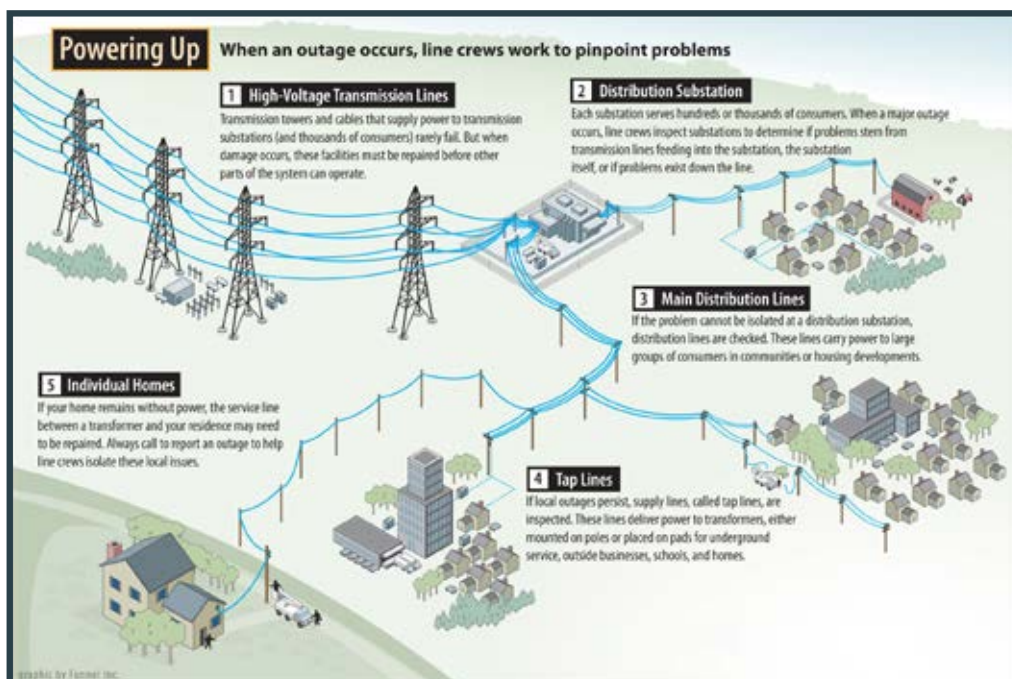
## OUTAGE SAFETY:

*Keep away from downed power lines!  
If you see a downed line immediately report it.*

*Never enter a flooded room; the water could be energized.*

*Have a storm prep kit ready; flashlights, extra batteries, battery operated radio, first aid kit, bottled water, non-perishable food, pet supplies, prescriptions, blankets, hand sanitizer.*

*sources: SafeElectricity.org  
& National Rural Electric Cooperative Association*







## OPERATION ROUND UP TRUSTEES NEEDED!

Operation Round Up has been a great success! In 2022, more than \$50,000 was awarded to 18 non-for-profit organizations from across the MJM service territory! Thank you to our membership for making this program possible, you have the gratitude from these organizations that serve in your communities.

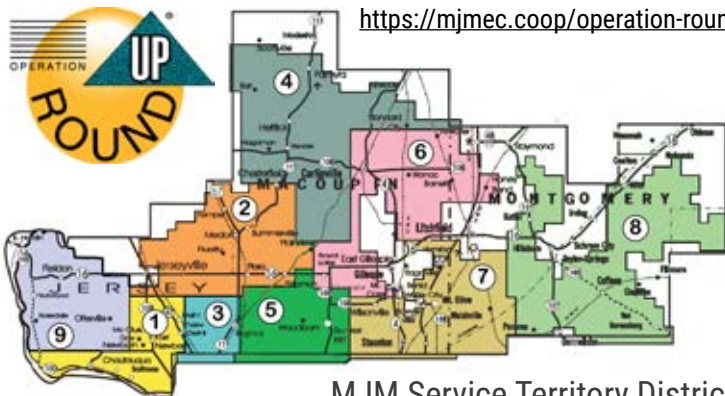
One of the key parts that makes this program work is the board of trustees. These roles play a vital part, and we thank them for their dedication to the program. Currently, we have a few that are at the end of their 2-year term serving on the board and we are actively looking for MJM members to step into these roles. We like to have a representative from each district, if possible, this helps us spread the word to each MJM district served.

Here is a list of requirements of being a member of the Operation Round Up board of trustees:

- We meet quarterly: January, April, July, October at MJM Headquarters, usually at 6pm on a chosen date.
- Mileage to and from these meetings is reimbursed.
- There is no fundraising involved. All funds come from members who allow their bills to be rounded up.
- Trustee term limits are 2 years.
- Following the Bylaws that will be provided by MJM, you and other trustees vote which organization's applications are accepted for funding.

Please contact MJM's Operation Round Up Coordinator if you are interested in serving a term on the board of trustees for your community. Email [ericc@mjmec.coop](mailto:ericc@mjmec.coop) or call the office at 217-707-6156

<https://mjmec.coop/operation-round-up>



MJM Service Territory Districts

## RISING COSTS AND THE EFFECT ON RATES

### MJM rates in 2023

Did you know that more than 56% of MJM's operating costs strictly pay the power bill to our wholesale supplier? Everywhere we look, prices are going up including the cost of MJM's materials. Paired with the supply chain slow-downs, the Cooperative has been put in a challenging position. To make the best decision for MJM's co-op members, the Board of Directors spent several months working with MJM's management team and analyzing a detailed rate study before approving a budget and rates for 2023.

As a result, the Board authorized a \$7 increase to the Service Delivery Charge for non-large power services (majority being residential services) and a Power Supplier Demand Charge increase for services on large power (Rates 9, 10, & 11). **No changes were made to the kWh base rates.** Despite the service delivery charge increase, MJM remains in the middle of the pack with the rest of the Illinois Co-ops.

Please see page 7 for all the updated rates info. We are striving to cut costs that our Co-op can control, while continuing to provide exceptional service to our members. We appreciate our valued co-op members!

### OPERATING COSTS ON THE RISE

(from 2021-2022)

- Cost of Fuel (+48%)
- Overhead Transformers (+45%)
- Pad Mount Transformers (+45%)
- Overhead Wire (+50%)
- Underground Primary (+50%)
- Underground Wire (+50%)



### HELPFUL RESOURCES AVAILABLE

MJM offers a **Levelized Billing** option to qualifying accounts, please contact the Billing Department at 217-707-6156.

Along the Lines newsletter energy saving tips.

<https://mjmec.coop/saving-energy-101>

Tracking your usage on the **SmartHub App**.





# ~ 2023 RATES ~

In response to the rising cost pressures of inflation, a Service Delivery Charge rate change will take effect on **January 1, 2023**. The bill you receive in February will show the billing period of **01/01/2023– 01/31/2023** and be billed according to the stated rates below. Base kWh rates will remain the same.

A **rate calculator** has been set up for your convenience at **MJMEC.COOP** for you to see how your bill may differ. If you don't have access to the website, please feel free to call the office and ask for assistance. 🌈

## Single-Phase Non Demand Non-Heat (Rate Class 1, 2, 3 & 4)

Service Delivery Charge	\$ 54.00	per month
Power Supplier Energy Charge	\$ 0.08663	per kWh
Distribution Energy Charge	\$ 0.02497	per kWh

## Three-Phase Non Demand Non-Heat (Rate Class 6, 7 & 8)

Service Delivery Charge	\$ 112.00	per month
Power Supplier Energy Charge	\$ 0.08663	per kWh
Distribution Energy Charge	\$ 0.02301	per kWh

## Single-Phase Electric Heat (Rate Class 5, 31, 32, 33, 37, 38, & 39)

Service Delivery Charge	\$ 54.00	per month
Power Supplier Energy Charge	\$ 0.08663	per kWh
Heating Energy Charge	\$ 0.046	per kWh
Distribution Energy Charge	\$ 0.02497	per kWh

## Three-Phase Electric Heat (Rate Class 34, 35, 36, 40 & 41)

Service Delivery Charge	\$ 112.00	per month
Power Supplier Energy Charge	\$ 0.08663	per kWh
Heating Energy Charge	\$ 0.046	per kWh
Distribution Energy Charge	\$ 0.02301	per kWh

## Single-Phase Large Power (Rate Class 9)

Service Delivery Charge	\$ 80.00	per month
Power Supplier Energy Charge	\$ 0.046	per kWh
Power Supplier Demand Charge	\$ 11.09	per kW
Distribution Energy Charge	\$ 0.03896	per kWh

## Three-Phase Large Power (Rate Class 10)

Service Delivery Charge	\$ 123.00	per month
Power Supplier Energy Charge	\$ 0.046	per kWh
Power Supplier Demand Charge	\$ 11.67	per kW
Distribution Energy Charge	\$ 0.041818	per kWh



18300 Shipman Rd., P.O. Box 80  
Carlinville, IL 62626

<https://mjmec.coop/mjm-electric-rates>



## MEMBER TRADING POST

**FOR SALE:** 3 Used Grain bins in excellent condition: 1 - 8000 Grain Bushel for \$1500. 2 - 3200 Grain Bushel for \$500/ea. Call 618-334-4298

**FOR SALE:** Season Fire Wood, 6ft pickup loads - \$100 or call for delivery price: Call Leroy @ 618-972-4658

**FOR SALE:** 15K Kingpin Hitch - \$250. Ford 2000 tractor, wide front, great condition - \$6000. John Deere 20/30 (gas) with Loader, good tires, runs great - \$8500. Call: 217-313-3839

**WANTING TO BUY:** Chest type freezer (does not need to run) Grafton IL, call 628-786-2999

**FOR SALE:** CF Moto 800 ZForce, 415 miles, new condition. Lots of after market parts: Custom rims, winch, harness seat belt, front windshield & a full heavy duty cover, all brand new, never out of the box. No lowball offers, Cash only, you pick up. \$11,500 with all extra equipment or \$11,000 without TEXT 217-827-7690 for pics.

**FOR SALE:** Brother serger sewing machine, used very little, needs stitch adjustment. Can't see well enough to sew any more. \$150  
TEXT 217-827-7690 for pics.

*Your Ad Here:  
See details below on  
how to get your Ad  
placed in the Along The  
Lines Newsletter!*