

ALONG THE LINES



A Touchstone Energy® Cooperative 

APRIL 2022

VOL.15, NO. 4

NEW DIRECTOR OF OPERATIONS

MJM would like to introduce you all to the new Director of Operations p.4

NEW MJM FORESTRY DEPARTMENT

Meet the crew and learn more about this new department at MJM. p.5

APRIL 18TH: NATIONAL LINEMAN APPRECIATION DAY

Thank you to the Lineman that keep our power moving. p.7

APRIL CALENDAR

- April 15th: Office Closed - Good Friday
- April 17th: Easter
- April 18th: Lineman Appreciation Day
- April 22nd: Earth Day
- April 27th: Administration Appreciation
- April 29th: Arbor Day

UPCOMING

- May 30th: Office Closed - Memorial Day
- June 10th: MJM Annual Meeting

Holidays observed:

New Year's Day, Good Friday, Memorial Day, Independence Day, Labor Day, Veterans Day, Thanksgiving Day, day following Thanksgiving and Christmas Day.



OFFICE: 217-707-6156
FAX: 217-854-3918

18300 SHIPMAN ROAD (PO BOX 80)
CARLINVILLE, IL 62626

WWW.MJMEC.COOP





HOW IT WORKS

Step One - Funding:

Members who wish to participate in the program have their electric bill rounded up each month and those few cents are deposited into a separate fund. For **example**, if your electric bill for one month is \$85.75, the bill would be rounded up to \$86.00 and the extra \$0.25 would be deposited in the Operation Round Up® fund. The donation averages \$6.00 per year per account; however, **the most a Member might contribute per account is \$11.88. If you have multiple accounts, you can choose which one(s) are active on the Round Up Program.**

The rounded-up amount will be listed on your statement each month. Bill statements should be kept and used for tax purposes.

Step Two - Applications & Approval:

The ORU Trustees will receive and review applications from individuals/organizations requesting funding for charitable purposes and approve of the distribution of the funds according to the bylaws of the fund.

Once the application's required information is completed and submitted to MJM, it will then be considered by the Grant Review Board for approval of funds.

OPERATION ROUND UP FUNDS AVAILABLE NOW

One of the Cooperative principles is **Concern for Community**. We feel a strong responsibility to the people in the communities we serve. One of the most rewarding aspects of Operation Round Up® is that it is an extension of the concept of neighbor helping neighbor that built our Electric Cooperative. Operation Round Up® helps Co-op Members reach out to worthy causes in their communities and work together to help others.

You can find more information and review the ORU Application Guidelines and ORU Application online at: <https://mjmec.coop/operation-round>



2021 RECIPIENTS:

- Toys for Tots
- Southside Church of Litchfield
- Carlinville Band Boosters
- Catholic Charities
- Carlinville Christmas on the Square

CURRENT 2022 LIST:

- Jersey County Historical Society
- The Restore Network (Jersey Co.)
- Zion Lutheran School (Litchfield)

Please send all **2022 applications**, all additional forms, and paperwork to:
Operation Round Up, P.O. Box 80, Carlinville, IL, 62626

For any questions regarding ORU or the application process, please reach out to:
Eric Cooper, Communications and Member Services Coordinator
email: ericc@mjmec.coop or **217-707-6028**

*Operation Round Up® is a separate entity with its own board of Trustees appointed by MJM Directors, who would oversee the funds. The Trustees of the fund will be Members of MJM Electric.





**18300 Shipman Road (PO Box 80)
Carlinville, IL 62626**

Office: 1-217-707-6156

Pay by Phone: 1-855-313-6314

Office Hours:

Monday - Friday 7:30 a.m.-4:30 p.m.

Board of Directors

- Chairman:** W. Kay Schultz.....Godfrey
- Vice Chairman:** Dennis Stewart.....Nokomis
- Secretary:** William R. Heyen.....Gillespie
- Treasurer:** Robert Moore.....Medora
- Robert Lehmann.....Girard
- Marcie Tonsor.....Jerseyville
- Dwayne MilnerPiasa
- James R. NiemannLitchfield
- Charles HuebenerBrighton

Staff

- Joe HeyenPresident/CEO
- Jeremy Pattillo.....Director of Finance and Accounting
- Jennifer Peterson.....Executive Administrator
- Matt Eisenmenger.....Director of Operations

Editor

- Eric Cooper.....Communications &
Member Services Coordinator

How to report an outage:

Call 217-707-6156 or use your SmartHub app.

- When you report an outage, give your name and location number.
- Before calling, check your fuses or circuit breakers.
- Check with your neighbors. Call to report hazardous conditions.

Please do not report outages on Facebook/Social Media.

MJM Along the Lines (USPS 854-620) is published monthly for \$3.00 per year by MJM Electric Cooperative, Inc., P.O. Box 80, Carlinville, Illinois 62626. Second-class postage paid at Carlinville, IL. POSTMASTER: Send Address changes to MJM Along the Lines, P.O. Box 80, Carlinville, IL 62626.

IN THIS ISSUE

- 04** New Director of Operations
Matt Eisenmenger joins the MJM team
- 05** Introducing the Forestry Crew
Meet the new staff and crew
- 06** Arbor Day: Right Tree, Right Place
Planting any trees this year? Check this article out
- 07** Lineworker Appreciation
Lineworkers Keep the Power Moving!
- 08** Member Trading Post
Items for sale, trade, or wanted to buy



Scan the purple box with your smartphone's camera to go to www.smarthubapp.com, set up your information, and start managing your MJM account from anywhere!



PLEASE RECYCLE



SAFETY TIP OF THE MONTH

FIVE STEPS TO SAFER DIGGING

1. Pre-mark the proposed dig area with white paint or flags.
2. Call **811** (JULIE Inc.) before you dig. There is no charge for the service.
3. Wait the required amount of time (typically 2 business days).
4. Respect the marks & do not move any flags.
5. Dig with care. Avoid digging on top of or within 18–24 inches on all sides of utility marks, which may mean moving your digging project.

www.call811.com

April is National Safe Digging Month

When someone calls 811 in the United States, he or she is connected to the local one call center, where a representative collects information about the caller's planned dig site. The one call center then communicates the information to the appropriate utility companies, which send professional utility locating technicians to identify and mark the approximate location of lines within a few days of the phone call. Once lines have been marked, the caller may dig safely around the marks.

MJM WELCOMES



MATT EISENMENGER DIRECTOR OF OPERATIONS

MJM would like to welcome and introduce you to our new Director of Operations, Matt Eisenmenger. Matt is currently living in Chatham with his wife Amy. They have 4 children; their daughters Ashley, Emily, and Kailey all are 25 years old, and their son Alex, who is 22.

Matt worked at Eastern Illini from 1991-2015 as a lineman ('91-'04), and a foreman for 10 years ('05-'15). He then began working at Association of IL Electric Cooperatives as a safety instructor in 2015 before arriving at MJM on Feb 14, 2022.

When he isn't on the job, Matt enjoys hunting, fishing, traveling and pretty much anything outdoors.

Matt is looking forward to working at MJM, getting to know all the staff and members, and we want to give Matt a very warm welcome to the MJM family.

WELCOME GUNNER LENTZ NEW APPRENTICE LINEMAN



MJM welcomes Gunner Lentz to the lineman team! Gunner is a lifelong resident of Hillsboro, IL and a second-generation lineman. He graduated high school early to start lineman school. He originally had to travel for his lineman's career from tree trimmer to Apprentice Lineman in Missouri, and finally landing here at MJM as an Apprentice Lineman. When Gunner is not working, he enjoys hunting, fishing, and watching football.

We are excited to have a second-generation Lineman starting here at MJM, welcome to the MJM family Gunner!

MEET MJM'S NEW FORESTRY CREW



(L to R) Foreman Larry Cochran, Journeyman Brian Bell, and Apprentice Shenan Stephens make up MJM's new Forestry Crew.

MJM would like to introduce you all to the new Forestry Division Crew that will oversee tree trimming and ROW clearing throughout the MJM service territory. Having an in-house team will help MJM reduce the amount of contracted tree services while providing quicker response times to areas that need immediate attention. As this new department develops and grows, the greater impact they will have for our entire service area. It is an exciting new area with great opportunity to continue providing our members the best service possible.

Let's meet the team:

Larry was born and raised in Greene County where he lived on a farm. He went to school in Greenfield Illinois and graduated from Illinois School of Welding as a Pipe Welder. Larry worked for Tower Automotive in Granite City as a Welder, worked as a Forman/Supervisor for 15 years for tree trimming/line clearance before joining MJM. In his free time, Larry enjoys hunting, fishing, golfing, and enjoying spending precious time with his family and friends. Larry would like to remind us all, "Be sure to always enjoy yourself, we really don't know how short life is."

Brian is from and currently lives in Nokomis, Illinois with his wife Lisa and 3 children: Remi, Kayden, and Brynlee. He comes to us from Nelson Tree Service where he worked for 2 and a half years. In his free time, Brian likes to go hunting and fishing.

Shenan is from Fieldon, IL where he lives with his wife, Jane and they have 6 children. Shenan worked on a local farm for 25 years, a sawmill for 6 years, and tree trimming for 1 year. He likes working on cars, trucks, and tractors in his free time.

We at MJM want to welcome this exciting new division to the team!



EARTH DAY IS APRIL 22ND, 2022

Across the U.S., electric cooperatives have deployed enough wind and solar energy capacity to serve nearly 2.7 million homes. Co-ops have also announced more than 6.4 GW of new renewable energy capacity additions planned from 2021-2024!

Below is a list of some great way we can celebrate Earth Day this year! www.earthday.org



HAPPY 50TH EARTH DAY!

Looking for activities to celebrate Earth's big day? We got you covered:



SUPPORT NATURE
Give back to the environment by planting a tree.



START A GARDEN
Whether it's flowers or vegetables, this activity helps you and the planet.



WATCH A NATURE DOCUMENTARY
Take some time to learn more about your planet.



CONSIDER ENERGY CONSERVATION
Research how you can take small steps in your daily life to save energy.



GO ON A NATURE SCAVENGER HUNT
Walk around the area and find flora and fauna native to your region.



PICK UP TRASH
Help your community by picking up trash around the area.



MAKE A BIRDHOUSE
Use recyclable materials to craft homes for the local bird population.



USE OLD MATERIALS FOR ARTS AND CRAFTS
Put that cardboard you have to good use by using it as a canvas.



ARE YOU READY FOR THE MJM ANNUAL MEETING?

WHEN?: JUNE 10th, 2022 3:30pm - 6:30pm

WHERE?: MJM Headquarters - 18300 Shipman Road, Carlinville, IL 62626

The 2022 Annual Meeting will be set up as a hybrid meeting. Beginning at 3:30 p.m., MJM's gates will open to the public for a drive-thru registration. After registering, Members will get a goody bag and bagged supper to-go. Registration closes to Members at 6:30 p.m. Members have the opportunity to get out of their car, eat their meal, listen to the entertainment, and speak with Board of Directors and MJM employees. If Members would like to stick around, a live meeting will take place at 6:35 p.m.

ARBOR DAY IS APRIL 29TH, 2022

Planting a tree on Arbor Day is what the day itself is all about. In America, an Arbor Day celebration was first adopted in Nebraska on April 10th, 1872. Prizes were offered to both counties and individuals for the largest number of properly planted trees on that day. It was estimated that more than one million trees were planted in Nebraska on the first Arbor Day! By 1920, more than 45 states and territories were celebrating, and today, all 50 states observe/celebrate Arbor Day.

WHERE TO PLANT?

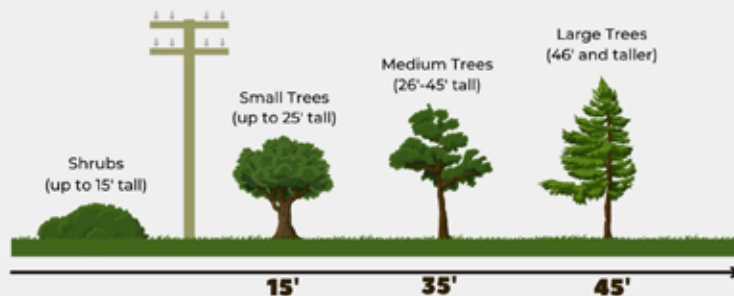
Available space is probably the consideration most often overlooked or misunderstood when deciding what tree to plant. Even for professionals, it is often difficult to envision the planting site five, 10, or 20 years in the future. Yet this is essential. Before planting, know what the tree will look like as it nears maturity. Consider its height, crown spread, and root space.

And for safety purposes, always call 811 (JULIE Inc.) BEFORE you dig.



Plant the RIGHT TREE in the RIGHT PLACE

The larger the tree, the farther it should be from a power line. Avoid planting beneath power lines, near poles or close to electrical equipment.



Remember, know what's below by calling 8-1-1 before you dig.

Learn more at: [Safe Electricity.org](https://www.SafeElectricity.org)

If you are interested in learning more, go to:
www.arborday.org

Their website has a full history, publications, materials, and a helpful

Follow MJM on Social Media

FACEBOOK: facebook.com/MJMElectricCooperative

TWITTER: twitter.com/MJMElectricCoop



*We do not process outages on Social Media.

Members can report outages by calling 217-707-6156 or thru the SmartHub App.

ELECTRIC LINeworkERS KEEP THE POWER MOVING

When people flip a light switch, they may not give much thought to why or how the light comes on. Electric lineworkers provide an essential service: They work hard to install and maintain overhead and underground power lines that keep electricity flowing. These specialized workers are on call 24/7 in case severe storms or other circumstances cause the power to go out.

Lineworkers work with high-voltage electricity, often at great heights, in all kinds of weather conditions, such as snow, wind, rain, ice and extreme heat and cold. The work required to maintain the power grid is physically demanding. To become proficient, most lineworkers go through a technical training program and first learn on the job as apprentices under the careful eye of seasoned lineworkers who have earned journeyman status.

According to the U.S. Bureau of Labor Statistics, electric power line installers and repairers typically:

- Install, maintain, or repair the power lines that move electricity.
- Identify defective devices, voltage regulators, transformers, and switches.
- Inspect and test power lines and auxiliary equipment.
- String (install) power lines between poles, towers, and buildings.
- Climb poles and transmission towers and use truck-mounted buckets to get to equipment.
- Operate power equipment when installing and repairing poles, towers, and lines.
- Drive work vehicles to job sites.
- Know and implement safety standards and procedures.

When a problem is reported, lineworkers must identify the cause and fix it. This usually involves diagnostic testing using specialized equipment and repair work. To work on poles, they usually use bucket trucks to raise themselves to the top of the structure, although all lineworkers must be adept at climbing poles and towers when necessary. Workers use specialized safety equipment to keep them from falling when climbing utility poles and towers.

Storms and other natural disasters can cause extensive damage to power lines. When power is lost, line repairers must work quickly to restore service to customers.

Article by: U.S. Bureau of Labor Statistics



Although everyone at MJM Electric Cooperative is dedicated to providing reliable service, we especially salute our lineworkers who work around the clock to keep the power on. Their safety, as well as yours, is our top priority.

So please join us in thanking all our MJM lineworker crews:

We really appreciate all that you do!





MEMBER TRADING POST

FOR SALE: John Deere Tractor Diesel 670, 5ft Mower, Turf Tires, \$5000. Call 618-535-6329

WANTING TO BUY: Small Bulldozer or Crawler, any condition. Call 618-402-4420 (ask for Brad)

FOR SALE: 6' Bush Hog SQ72 Rotary Cutter. Always kept in shed and maintained. \$1,100. Call 618-600-3116

FOR SALE: 4 tires, Linglong Crosswind A/T 31 X 10.50, R15LT, less than 20mi on them. Call: 217-324-6766

FOR SALE: 2009 Bison Stratus Express 8380LQ 3 horse slant, 8 ft wide. feed managers, rear tack, sleeps 3-4, stove top, microwave, small refrigerator, toilet, separate shower, walk thru door. Call 618-410-6275 for price.

FOR SALE: BIKER APPAREL Men's & Women's riding jackets/pants, rain gear, helmets, boots, gloves, tank bags, alarms. E-mail mdmeng@royell.org for a complete list and package price. Everything is in very good condition.

FOR SALE: Grass Hay, Round and Square bales available. Staunton area. 618-779-7742

FOR SALE: Retired Farmer Sale: JD 415 Rotary Hoe – 6 row, 30 inch. JD- 637 Disk Harrow – 25' Wide, JD – 7200 Planter– 6 row Corn Units, Bean Meters set up for no till. 12ft Disk Chisel, (2) EZ Trail Gravity Wagon, Model 450, Westfield 10x61 Auger, Call 618-535-5121 for more information.